

Council Crest tower to reach 160 feet this month

by Leonard Gard, SWNI Program Manager



The new Council Crest tower on February 19, at about 100 feet.

Construction work continues on the new Council Crest radio tower. It will send and receive emergency radio communications for police, firefighters, and other emergency personnel.

In early February, all of the footings had been poured and the three legs of the tower reached 60 feet, the height of the first platform on the tower. Although construction progress is dependent on the weather, project manager Bob Ochs of the city's Bureau of Technology Services expects that by the end of March the tower will reach 160 feet in height. Then at the end of March work will be suspended until summer. Good weather and low wind or windless conditions will be important during construction above 160 feet to the top at 442 feet.

Bob and the contractor on the job, New Horizon Communications, plan to use a very big crane to erect the final 282 feet of tower, but that crane may not be available this coming summer. If so, another technique

will be used to complete construction.

I recently had the opportunity to take a tour of the equipment rooms at the base of the tower. All very interesting: lots of electronics, banks of batteries to keep the operation running in a power outage, and, to back up the batteries, a generator that looked like a big car engine.

Information on this project is on the city's website at www.portlandonline.com/omf/councilcrest. For trails and traffic information, call 503-823-1989. And you can contact me, Leonard, at 503-823-4592 or leonard@swni.org.

In related news, construction has started on a 120-foot tall monopole radio tower on the PCC Sylvania campus. The tower will also carry emergency radio communications. There have long been "dead zones" in this far southwest corner of Portland, at times leaving police without radio contact. This tower will end that problem. Construction will take about 90 days.

SW HOPE FEED THE HUNGRY

Local churches, synagogues and organizations working together to meet the needs of hungry people in Southwest Portland.

www.swhope.org

What is SW HOPE: FEED THE HUNGRY?

Local churches, synagogues, and organizations are working together to meet the needs of hungry people in southwest Portland.



What is the need?

The number of families seeking food assistance in Southwest Portland has greatly increased this past year. In 2007, Neighborhood House, our local community service organization, distributed boxes of food to 230 to 280 families a month, feeding approximately 800 individuals. In the fall of 2008 and into the winter of 2009, food boxes have been distributed to 400 - 420 families, feeding up to 1,300 individuals.

What is the goal?

To collect 100,000 pounds of food or the cash equivalent (\$1.00 = 5 lbs.) to feed all the hungry people in southwest Portland for four months.

When will this happen?

The SW HOPE: FEED THE HUNGRY campaign will be held in the months of February and March.

How you can help?

Please join us in this effort to help our neighbors in need by donating canned food and non-perishables or making monetary contributions when your neighborhood is canvassed between February 22nd and April 5th.

Checks may be made out to: Neighborhood House. Please note in the memo line "SW HOPE."

Dine Out to Donate!

Bring your SW HOPE Coupon* and these local restaurants will donate a portion of their proceeds to SW HOPE: FEED THE HUNGRY.

Coupons for participating restaurants can be picked up at Neighborhood House, sponsoring churches and synagogues or printed from www.swhope.org. You must bring coupons to these restaurants.

Locations dates and times:

Baja Fresh Mexican Grill, (Barbur & Terwilliger - 7421 SW Barbur Blvd), through April 5, 10:30 am-closing.

Cactus Jack's Tex-Mex Cafe, (4324 SW Beaverton-Hillsdale Hwy), March 1, 8, 15, 22, 29, all day.

Casa Colima, through April 5 (6319 SW Capitol Hwy), all day.

Clubhouse Bar & Grill, (5134 SW Beaverton-Hillsdale Hwy) Mar 2, 9, 16, 23, 30, all day.

Fat City, April 3, 5 -10 pm, (7820 Capitol Hwy). Spaghetti dinner.

McMenamins Brew & Pub Hillsdale, (7850 SW Capitol Hwy), March 10, 5 - closing. (1505 SW Sunset Blvd)

O'Connor's Restaurant, See website www.swhope.org,

Pizza Schmizza, (9206 SW Beaverton-Hillsdale Hwy, Beaverton), through April 2, Mon-Thurs, all day.

Round Table Pizza, (10070 SW Barbur Blvd), Mar 4, 11, 18, 25, Apr 1, all day.

Salvador Molly's, (1523 SW Sunset Blvd), through April 2, Sun-Thurs, all day.

The Old Spaghetti Factory, (715 SW Bancroft St), March 10, 11:30 am-2 pm, & 5 - 9 pm.

Three Square Grill, (6320 SW Capitol Hwy), March 24, 5 - 9 pm.

Food can also be delivered to the following SW HOPE: FEED THE HUNGRY drop sites including:

SW Neighborhoods, Inc. (SWNI), 7688 SW Capitol Hwy

or

Neighborhood House, 7780 SW Capitol Hwy.

9 am - 5 pm, Mondays - Wednesdays; 9 am - 8 pm, Thursdays;

9 am - 4 pm, Fridays

or to any of the sponsoring churches and synagogues.

For more information, phone 503-246-1663, or visit www.nhweb.org

You are invited to the

Multnomah County Budget Forums

Monday, March 2, 2009, 6 - 8 pm

East County Service Center

Sharron Kelley Conference Room

600 NE Eighth Street, Gresham

Topic: Health and Human Services

Monday, March 16, 2009, 6 - 8 pm

Multnomah Building, Boardroom

501 SE Hawthorne, Portland

Topic: Public Safety

Southwest Neighborhoods, Inc.
7688 SW Capitol Hwy
Portland, OR 97219

NONPROFIT ORG.
U.S. POSTAGE PAID
PORTLAND, OR
PERMIT NO. 1348

Weigh-in on the City of Portland's Neighborhood Budget

See "The right budget" page 2



Everything you need to know about Garlic mustard

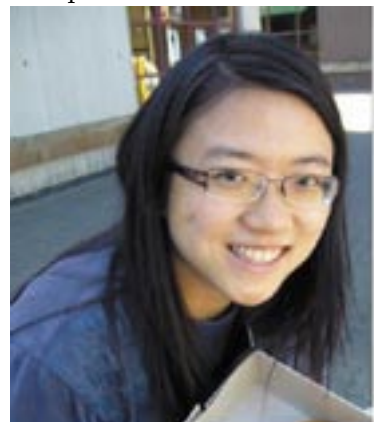
Pages 7 - 10



Say hello to our student volunteers

by Payal Razdan, SWNI Outreach Coordinator

SWNI has been making great strides to provide internships and work opportunities for graduate students. Creating a network between students allows SWNI to tap into a pool of experienced, innovative and energetic talent. Recently we had the opportunity to work with three bright graduate students that are providing us with a helpful hand.



Vivian Siu is working with SWNI on designing a more informative annual report. Vivian is currently obtaining her Master in Urban and Regional Planning from PSU and also a Master of Public Health degree from OHSU. She is expecting to graduate in 2010. Vivian has done a great deal of research in the social sciences and work related to GIS. Although she is still exploring what she wants to do after graduation, she is interested in finding a career that relates to her interest in promoting healthy communities.

Since volunteering at SWNI, Vivian has been impressed by the vast number of community events that are organized by SWNI, local organizations,

and the city. Although not a resident in the City of Portland, her experiences inspired her to start exploring activities happening in her neighborhood. Vivian would also love to expand her familiarity with the SW trails, as there are so many interesting neighborhood trails in Southwest Portland.



Rahul Razdan is designing a searchable database for the SWNI Small Grants Program. Rahul is an IS professional with 10 years of experience in system configuration, the systems development life cycle, Oracle 9i database and apps, Microsoft Access version 2.0 to current, and has also spent two years as a UNIX systems administrator to briefly highlight his professional background. Rahul's most valuable contribution has saved *The Washington Post* about \$100K a year in deploying laptop and desktop systems by reducing Windows XP image deployment times and user profile migrations.

Rahul has completed his BS in Information Systems from the University of Maryland Baltimore County, and will be completing his MS in Man-

agement Information Systems from the George Washington University this May.

When Rahul is not busy supporting the systems and journalist of the *Washington Post*, he spends time as an Assistant Scoutmaster with Troop 319 in Washington, DC.



Erin Corrigan worked on data entry and assisted in organizing information from previous years of the SWNI Small Grants Program. Erin has a Master of Fine Arts in writing and literature and will be completing her MPH at Portland State University in 2009. Erin has 15 years of experience in publishing. Her last position was as a publishing manager with the world's largest independent travel guidebook company, Lonely Planet. In the future Erin would like to pursue public health policy advocacy. Erin wants individuals, particularly policymakers, to know just what public health is and how it improves our lives in many ways every single day.

The right budget for neighborhoods: Now more than ever

In the current economic climate, city government has fewer funds to keep Portland healthy, not just environmentally and economically, but also for social sustainability. Portland communities will need to do more. Fortunately, Portland has a nationally recognized neighborhood system in place to connect people to each other and to their city.

Just like all city bureaus the Office of Neighborhood Involvement (ONI) has been asked to take cuts. Because of the level of one-time dollars in our budget the 2.5 % cut requested by the Office of Management & Finance is actually a 16% cut to the ONI budget. A 5% reduction is actually an 18% reduction in the ONI budget. ONI's budget workgroup of approximately 100 geographically and demographically diverse participants volunteered approximately 40 hours to help develop ONI's budget.

The ONI Budget Advisory Committee (BAC) is advocating for a 10% overall cut, which is not a wish list, or an ideal budget, but rather what ONI's budget work group considered to be a realistic budget, taking into consideration the current fiscal climate.

"The Right Budget:"

- keeps the neighborhood coalitions to less than 10% overall reduction, and about a 2.5% operations reduction, thereby saving staff hours.
- maintains the neighborhood small grant program, which leverages about triple the money invested in it and seeds many long term partnerships annually.
- holds cuts to disability and elders to a minimum.
- holds crime prevention reductions to materials and services continues a staffing level that has allowed the program to make significant and long-needed service improvements over the past two years such as more and better trainings and events, partnerships to provide faster, better service to the public.
- holds small diversity and civic leadership programs, which support organizing and partnership with communities of color, harmless.

****NOTE: If the city holds the Office of Neighborhood Involvement to the full 18% all of the above programs sustain significant losses.**

Reduction/Losses at 10%

Graffiti Abatement Program reduced by 50%. Eliminates free graffiti removal program and focuses on enforcement and volunteer coordination only. Although critical to the city, this program was identified as least core to the ONI mission.

Coalition Reductions:

Neighborhood Accessibility Fund eliminated - cuts 100% of fund for coalitions for translation/interpretation, childcare, transportation and accessibility. Coalitions will also lose communications funds.

Community engagement program eliminated - cuts 100% of fund for small targeted coalition partnerships with underrepresented groups.

Weigh-in With Your Thoughts:

Visit <http://www.portlandonline.com/omf/index.cfm?c=26061> for the full budget package details and online comment forms.

Infill Design Toolkit in SWNI office

by Leonard Gard, Program Manager

The city's bureau of planning and sustainability has provided one copy of its new Infill Design Toolkit to SWNI. We'll keep it in the SWNI library for public use. The cover letter with the document states the hope that the document will be a resource for ideas and information to help community members communicate effectively with builders about development proposals. I think it can be such a resource. I'm not always in the office, so it's best to call ahead to the SWNI office if you want to peruse the toolkit.

Residential infill is frequently a controversial topic, and the city has heard the complaint that the new housing filling in neighborhoods is sometimes not compatible with nearby existing housing. Often it's a new house, legal, but much bigger than surrounding houses.

The toolkit philosophy is not to create compatibility by requiring new housing to hew closely to the neighborhood's existing building scale or architectural style. Rather, the philosophy is to replicate basic neighborhood patterns.

Civic Ecology:

A framework for a sustainable Hillsdale

A presentation by Timothy Smith of SERA Architects will be on

**Tuesday, March 17, 7 pm
The Watershed
(Bertha Court and SW Capitol Hwy)**

Hillsdale, like many communities, has begun to realize that attaining sustainability requires planning, constructing, and managing a comprehensive framework of community systems.

Energy, food, local business, social capital, governance and resource-sharing are parts of a "civic ecology."

Tim Smith's presentation will explain how civic ecology:

- Focuses on meeting human needs.
- Draws upon community capacity to leverage change.

Integrates the community's economic, social, ecological and governance sectors.

Facilitates the development of robust social capital to design, construct, and manage community systems.

Timothy W. Smith, AIA, AICP, is an architect, city planner, urban designer, and principal with SERA Architects in Portland, Oregon. He has served as vice president of the Portland Planning Commission, on the Portland Mayor's Central City Roundtable, and the Portland Chapter of the American Institute of Architects (AIA) Urban Design Committee. He has lectured extensively on the concept of civic ecology and is currently teaching a course and working on a book on the topic.



Big Vision, Small Change

by Brian Russell, Southwest Neighborhoods Chair

As I write, Congress has just passed the \$787 billion stimulus plan that President Obama is expected to sign. While I believe we desperately need to make changes in the way we live as a country, I think that this plan is very short-sighted. We are taking on debt in a massive way. The current stimulus plan won't be the last and I'm concerned we're just digging the hole deeper. When I make a decision, I always ask myself, "How will this affect my grandchildren?" America is about to be so far in hock that our country will be owned by foreign interests indefinitely. We are on the cusp of saddling our descendants with an unbearable burden.

Don't get me wrong. I believe we need charismatic leaders with visionary plans, but this country and this state are in trouble. If individuals get in over their heads, we expect them to either work their way out of debt or declare bankruptcy, which has long-term implications for their financial future. Our country needs to cut up our national credit card and start living within our means. Bad banks shouldn't be getting sweetheart loans and giving bonuses to inept CEOs, they should be selling off their assets to banks that have proven they can be responsible money managers.

Our state government needs to keep these lessons and principles in mind while working through this biennial budget as well. We need to act prudently and to keep our spending within our means. Our legislators' decisions need to be made with future Oregonian generations in mind. Rashly wasting our money on "shovel-ready" projects that will just bury us in IOUs, while not funding our state school systems, is clearly a lapse in judgment. On the other side of the coin, the "kicker," corporate tax and other revenue structures all need to be re-examined.

Now, neighbors, while I am preaching that organizational and governmental financial responsibility be taken to a new level, I'm not letting YOU off the hook. At the individual level, we ALL need to be making decisions concerning our money with thoughtful foresight. If you already carry large balances on your credit cards, NOW is the time to cut back on buying trinkets you don't need and meals you can prepare at home. Small sacrifices now can lead to strong households that can weather these uncertain times. Living without bad debt can also reduce your stress levels, leading to lower health-care costs and improved quality of life.

Once you feel secure and healthy, financially and otherwise, you'll be in a better position to play your part in our global recovery. We must work together with our business, social and government leaders to articulate the big picture that we collectively create. We must strive individually to make incremental changes to make our community healthy and vibrant. Only then will we truly be on the path to prosperity.

Draft Marshall Park Habitat and Trail Plan ready for your review

Coleen Keyes, Community Outreach/Web, Portland Parks & Recreation

The draft Marshall Park Habitat and Trail Plan (the plan) is posted on Portland Parks & Recreation website (www.portlandparks.org) for review and comment until March 23, 2009. Emily Roth, Natural Resource Planner for PP&R, will attend the Marshall Park Neighborhood Association meeting on Thursday, March 12, to review the draft plan and maps. The meeting is held at Capitol Hill Elementary School Library, 8401 SW 17 Ave, 6-8 pm.

The plan is designed to set the course for the habitat management, stewardship, and trail system for Marshall Park, and Foley-Balmer and Jensen natural areas. The plan lays the foundation for habitat protection and enhancement, as well as recreational access and use, and will guide stewardship activities and sustainable trail construction. It is also a reference document providing a variety of background and environmental assessment information.

The plan's guiding principles are:

- Protect and enhance the natural area values of the parks so users continue to experience the benefits of enjoying nature.

- Protect and enhance terrestrial, avian, and salmon habitat along the creek and in the upland habitats.

- Provide a sustainable, contoured trail system to provide pedestrian access and visual access to the forest and streams, and safely connect to other natural areas and the regional trail system.

- Create a welcoming, safe play and picnic area that encourages the park's use for neighbors and the community.

- Provide signage that will enable people to locate the park more easily, as well as navigate within its boundaries and connect to other natural areas and trails.

- Provide educational opportunities for all ages on the ecology and history of the park and natural areas.

- Work cooperatively with neighbors and community stewards to manage the park and natural areas for the enjoyment and safety of all users.

If you would like to learn more about the plan, please attend the Marshall Park NA March 12 meeting. To review the draft plan and add your comments, please go to www.portlandparks.org and look for the link under What's New.

The Southwest Neighborhood News is distributed free, published monthly, by Southwest Neighborhoods, Inc. All submissions are due by the 15th of each month.

Southwest Neighborhoods, Inc., (SWNI) is a nonprofit coalition that provides services to promote citizen participation and crime prevention in 17 Southwest Portland neighborhood associations and three business associations.

Our mission statement reads: "SWNI empowers citizen action to improve and maintain the livability of Southwest neighborhoods." Partial funding is from the City of Portland through an annual contract.

Our office is located in the Multnomah Center, 7688 SW Capitol Hwy. We are open 8:30 am to 5 pm, Monday through Friday. To reach us call 503-823-4592, email ginny@swni.org.

SWNI staff: Sylvia Bogert, Executive Director; Leonard Gard, Program Manager; Ginny Strome, Operations Manager; Payal Razdan, Outreach Coordinator, and Jennifer Blatner, WRC Coordinator.

The 2008-2009 SW Neighborhoods, Inc., Board Officers are Brian Russell, President; Ken Love, 1st Vice-President; Tye Steinbach, 2nd Vice President; Susan Egnor, Secretary; and Tom Schaper, Treasurer.

Mark your calendars: Saturday, May 9, 2009 set for annual SW Neighborhoods Spring Cleanup and Litter Patrol, now partnering with PCC Sylvania

Kate Chester, Community Relations Manager, PCC Sylvania

Do some "spring cleaning" and celebrate Mother Earth on May 9. It will be the annual "Spring Cleanup" led by Southwest Neighborhoods, Inc. (SWNI)/SOLV Litter Patrol. It will be held at the Portland Christian Center parking lot, 5700 SW Dosch Road, just off Beaverton-Hillsdale Hwy.

The cost is \$10 per carload of recyclable items. The event, which will begin at 9 am and end at 1 pm, is co-sponsored by the City of Portland Office of Sustainable Development and METRO.

New to the mix this year is Portland Community College, which will lead the e-cycling portion of the event. Faculty and students from the Sylvania campus in Southwest Portland will accept most old, unwanted electronics - computers, television sets, stereos, DVDs and CD players - free of additional charges (many electronics recyclers charge extra fees because of the expense to recycle these items). Items will be triaged and sorted on-site, before being responsibly recycled.



2008 PCC Sylvania e-cycle Event

didn't have the capacity to offer this service without charging extra. PCC does, so their participation in the event really raises it to the next level," she said.

"We're excited to be a part of the Annual Spring Cleanup," added Diane Shingledecker,

recycling event will enable us to create greater awareness about how to reduce the amount of e-waste being dumped into landfills," said Shingledecker.

As in past years, SWNI/SOLV also will accept scrap metal (toasters, ladders, empty buckets); bulky items and large appliances (couches, chairs, refrigerators, exercise equipment); and yard debris and wood items (weeds, leaves, vines, grass clippings, fencing) at its "Spring Cleanup." Items not accepted include hazardous waste, kitchen garbage, stumps, rocks, ashes and asbestos.

The annual recycling drive is volunteer-driven, so those interested in donating a few hours that day should call SWNI at 503-823-4592. Volunteer duties may include directing traffic, unloading yard debris from vehicles into dumpsters, and assisting drivers picking up items from seniors and disabled who have pre-arranged visits.

For more information or to sign up for a senior/disabled citizen pick-up, call 503-823-4592, or email ginny@swni.org.

interim department chair for Computer Applications/Office Systems at PCC Sylvania and the lead organizer of last year's e-cycle event held on campus. "There's power in numbers. To have multiple partners this year and join a well-established

Sponsored by:



We're all about your future.



Vandalism in Southwest Portland

by Stefanie Adams, Crime Prevention Coordinator



by junior high school males and tends to be less frequent among high school students. This guide notes that many vandals struggle academically; are truant, suspended or expelled from school; but are no more emotionally disturbed than their peers who do not commit these acts. However, these youth often do not realize the impact their actions have on others. Moreover, there doesn't appear to be any social repercussions from such behavior from peers.

In Portland, tagger graffiti is the most dominant type at 80-85% of all graffiti incidents where an individual uses a moniker and/or works with a crew. These vandals tend to be young adults with a median age of 20 years; their goal tends to be notoriety. Gang graffiti constitutes around 13-15% of the total and is growing; these offenses often are committed to establish territory or communicate with other gang members. Political and hate/bias graffiti represents a small percentage of the total; hate graffiti was seen during the presidential campaign when some of President Obama's signs were defaced. See www.portlandonline.com/oni and select graffiti abatement for more information.

Some general motivations for vandalism as defined by Cohen typology of vandalism:

- Acquisitive. Vandalism is the means to obtain money and property such as breaking a coin machine to get the money.
- Tactical. Vandalism is a means to achieve another purpose such as breaking a window to get into a building.
- Ideological. Vandalism occurs to communicate a political or social message including a graffiti tag that stands for anarchy.

- Vindictive. The motivation of this type is revenge.
- Play. Vandalism is part of a game such as kids daring each other to break windows.
- Malicious. These acts reflect an expression of anger or rage.

Understanding the motivation of the offense can help formulate an appropriate intervention.

Steps to the prevention and deterrence of vandalism are as follows:

- Report incidents to the police by calling 9-1-1 for crimes in progress and the non-emergency number 503-823-3333 if the crime has been committed and the suspects have left. The non-emergency number should also be used to report suspicious activity.
- Take a picture of the graffiti before removing it and contact the graffiti hotline at 503-823-4TAG. The City of Portland maintains a database of incidents and graffiti photos to document damage to properties; without pictures, a case can't be made against a tagger. When a tagger is caught, the database is used to build a case against that individual. You can also file a report with the city online at www.portlandonline.com/oni and choose graffiti abatement; photos can be attached to the online report. This step is not in lieu of contacting the police, but is performed in addition to. Property owners are the only ones who can make a police report for damage to their property.
- Repair damaged property and remove graffiti as soon as possible, ideally within 24 hours. This is seen as one of the most effective ways to deter further incidents.
- Parents should talk to their children about the impact of vandalism on the community. If they are caught, child offend-

ers may benefit from learning how their actions affected the injured party.

- Structure activities for kids to engage in after school. This can help channel energy into positive activities.
- Evaluate the landscaping, lighting, and layout of a place for its surveillance or visibility. If there are hidden spots that exist on a property, steps should be made to improve the area, e.g., dense bushes are trimmed or lighting is installed in dark areas. This allows neighbors to observe what's happening on a property.
- Focus problem-solving efforts on areas that are regularly vandalized. Specific interventions may be necessary to curb crime. For example, if there is a blank wall that is regularly tagged, a community mural might be painted on the area or thorny vegetation may be planted as a solution.
- Form foot patrols or neighborhood watch groups. When

neighbors are invested in what's happening on their street, they tend to be able to more easily identify and report suspicious activity to the police. Foot patrols are active watch groups consisting of individuals who walk an area at a time that is typically problematic, observe what's happening, and report suspicious activity or crime to the police. They do not confront subjects or make other people who might be legitimate users of the area uncomfortable. Contact your Crime Prevention Coordinator for more information.

- Maintain the building and grounds. Dilapidated and unkempt areas can attract nuisance activity.
- Reinforce vulnerable areas with graffiti resistant coating, window treatments, etc. to increase the ease of removal or difficulty of vandalism.

Curfew and Spring Break

Portland City Code 14A.80.010

It is unlawful for any minor to be in or upon any public property or public right of way between the hours specified in this section, unless such minor is accompanied by a parent, guardian or other person 21 years of age or over and authorized by the parent or by the law to have care and custody of the minor, or unless such minor is then engaged in a school activity or lawful employment that makes it necessary to be in or upon any city property or public right of way during the hours specified in this section.

For minors under the age of 14 years who have not begun high school, curfew is:

School Days:
9:15 pm to 6 am
Non-School Days:
10:15 pm to 6 am

For children 14 years of age or older who have begun high school, curfew is:

School Days:
10:15 pm to 6 am
Non-School Days:
midnight to 6 am

If a minor is taken into protective custody in violation of curfew, it is the responsibility of the parent, guardian, or other person having legal care and custody of the minor to come immediately and take custody of the minor from the police.

Southwest Portland Crime Stats for December 2008

www.portlandonline.com/police

	Arnold Creek	Ash-creek	Bridle-mile	Collins View	Crest-wood	Far SW	Hay-hurst	Healy Heights	Hills-dale	Home-stead	Maple-wood	Markham	Marshall Park	Mult-nomah	S Burl-ingame	S PDX	SW Hills	W PDX	TOTAL
Aggravated Assault	0	0	0	0	0	0	0	0	0	0	0	0	0	0	2	2	0	1	5
Arson	0	0	0	0	0	0	0	0	0	1	0	0	0	0	0	0	0	0	1
Burglary	0	1	2	1	0	0	2	0	2	1	0	0	0	3	0	3	1	0	16
Larceny	0	0	1	4	0	1	3	0	4	7	1	0	0	4	0	1	0	5	31
Robbery	0	1	0	0	1	0	0	0	0	0	0	0	0	0	0	0	0	1	3
Theft from Vehicle	1	2	1	1	0	5	1	0	5	0	0	0	2	1	0	2	4	1	26
Vehicle Theft	0	0	0	0	0	0	1	0	2	0	0	0	0	0	0	2	0	0	5
Drugs	1	0	0	1	0	0	0	0	2	0	0	0	0	0	0	0	1	0	5
Embezzle	0	0	0	0	0	0	0	0	0	0	0	0	0	0	0	0	0	1	2
Forgery	0	0	0	0	0	0	0	0	1	0	0	0	0	0	0	0	1	1	3
Fraud	1	0	0	0	0	0	0	0	0	0	0	0	0	0	1	1	1	0	4
Sex Crime	0	0	1	0	0	0	0	0	0	1	0	0	0	0	0	0	0	0	2
Simple Assault	0	0	0	1	0	0	0	0	3	0	0	0	0	2	0	2	0	2	10
Vandalism	0	2	2	5	0	0	2	0	2	1	0	0	0	7	0	2	0	4	27
Curfew	0	0	0	0	0	0	0	0	0	0	0	0	0	0	0	0	1	0	1
Disorderly Conduct	0	0	0	0	0	0	1	0	0	1	0	0	0	1	0	3	0	2	8
DUII	1	0	0	1	0	0	0	0	0	0	0	0	0	1	1	0	3	0	7
Liquor Law	0	0	0	0	0	0	0	0	0	0	0	0	0	0	0	1	5	0	6
Runaway	2	0	0	0	1	0	0	0	0	0	0	0	0	0	0	0	0	1	4
Trespass	1	0	0	0	0	1	1	0	0	0	0	0	0	4	0	2	1	1	11
TOTAL	7	6	7	14	2	7	11	0	22	12	1	0	2	23	4	21	18	20	177

Crimes with no occurrences for the month of December 2008: Homicide - Rape - Prostitution - Stolen Property - Weapon - Kidnapping - Gambling - Offense Against Family

FREE!!

GADGETS—GIZMOS—GDL Teen Driver's Licensing Workshop

Supported by City of Portland Office of Transportation
Presented by Legacy Emanuel Hospital's Trauma Nurses Talk Tough (TNNT) & Multnomah County Circuit Court Judge

Pre-register to guarantee seating.

Please call: 503-413-2340
or email: cbowles@lhs.org

March 4, 2009

Location:
Legacy Emanuel Hospital
2801 N Gantenbein Ave.
Portland, OR 97227

Lorenzen Center RM 1702
Seating: 5:45 PM
Food: 6:00-6:30 PM
Program: 6:30-9:00 PM

March 16, 2009

Location:
PCC
SE 82nd/Division
Tabor 126

**Seating is limited
Seating: 5:15 pm
Food: 5:30-6:00 PM
Program: 6:00-8:30 PM



Teen Driver's Licensing Workshops

- Increase development of safe driving behavior among youth
- Increase knowledge for parents about how to best support young drivers
- Increase understanding of reasons and importance for following GDL laws
- Increase monitoring Gadgets & Gizmos Savvy
- Appropriate for youth 14-18 yrs. with or without license or permit
- Project is funded specifically to serve Portland families

Food & Prizes!

Advantage & Benefits for Youth & Parents Attending GDL Workshop Education Together:

- Develops Awareness and Empowerment
- Fosters Understanding and Cooperation
- Helps Reduce the Crash and Violation Rates for Youth
- Increases Community Traffic Safety

Includes Handout—"How to Utilize GDL Laws Effectively"

- Offers Tips on How to Customize the GDL Law Components
- Includes a Teen Driver Contract Construction Activity
- Available, Certificate of Attendance (for extra credit offered by some PPS Health and driver's ed. teachers)

The Fourth Annual Ready. Safe. Go.

Saturday, April 25th, 2009
Warner Pacific College
2219 SE 68th Ave.

Registration at www.portlandonline.com/oni.



What is Ready. Safe. Go.?

This annual training is a partnership between the Office of Neighborhood Involvement (ONI) Crime Prevention Program and the Portland Office of Emergency Management (POEM). Training workshops are offered on a variety of crime prevention and disaster preparedness topics, which appeal to both the experienced and beginning public safety volunteer.

A special feature of the day is the volunteer recognition and honoring of community public safety volunteers who collectively create a safer Portland. Awards are given to volunteers involved with Crime Prevention, Neighborhood Emergency Teams (NETs), and Medical Reserve Corps, which are all Citizen Corps programs.

Questions

For questions about registration or Crime Prevention classes contact:

Kelly Ball at 503-823-9666
or kelly.ball@ci.portland.or.us

For questions about Emergency Management contact:

William Warren at 503-823-4421
or wwarren@ci.portland.or.us

Southwest Portland Top 5 Crimes Comparison 2007 vs. 2008

www.portlandonline.com/police

Below are the statistics for the top five crimes in Southwest Portland for 2007 and 2008, by neighborhood. The percentage change reflects the difference between 2007 and 2008. For both years, Theft from Vehicle, Larceny,

Vandalism, Burglary, and Disorderly Conduct ranked in the top five in the same order. Larceny is the unlawful taking of property from the possession of another; it includes pickpocket, pursesnatch, shoplift, and bike theft.

Overall, Southwest Portland saw a decrease in these crimes for 2008 versus the prior year. However, some neighborhoods experienced an increase in incidents for a particular crime despite the overall decrease.

The fourth quarter of 2008, October through December 2008, versus the same period in 2007 also showed decreases in four areas as follows:

4th Quarter 2007 vs. 2008

- Larceny: 117 vs. 104
 - Theft from Vehicle: 128 vs. 99
 - Vandalism: 135 vs. 84
 - Disorderly Conduct 36 vs. 27
- However, burglary increased for the same period to 55 vs. 61.

	Arnold Creek	Ash-creek	Bridle-mile	Collins View	Crest-wood	Far SW	Hay-hurst	Healy Heights	Hills-dale	Home-stead	Maple-wood	Markham	Marshall Park	Mult-nomah	S Burl-ingame	S PDX	SW Hills	W PDX	TOTAL
Theft from Vehicle 2008	12	8	39	16	2	24	18	2	48	38	7	11	9	51	4	107	47	21	464
Theft from Vehicle 2007	16	23	21	18	2	13	27	2	74	34	7	8	3	48	22	107	79	16	520
% Change	(25%)	(65%)	86%	(11%)	0%	85%	(33%)	0%	(35%)	12%	0%	38%	200%	6%	(82%)	0%	(41%)	31%	(11%)
Larceny '08	8	11	16	61	2	36	13	0	49	70	13	5	2	58	7	43	9	31	434
Larceny '07	5	5	22	65	7	28	12	1	77	82	7	3	3	59	2	88	16	26	508
% Change	60%	120%	(27%)	(6%)	(71%)	29%	8%	0%	(36%)	(15%)	86%	67%	(33%)	(2%)	250%	(51%)	(44%)	19%	(15%)
Vandalism 2008	3	14	26	67	4	13	18	0	43	14	4	12	6	54	3	59	15	26	381
Vandalism 2007	3	25	14	78	6	21	22	0	27	9	5	6	3	44	3	105	26	20	417
% Change	0%	(44%)	86%	(14%)	(33%)	(38%)	(18%)	-	59%	56%	(20%)	100%	100%	23%	0%	(44%)	(42%)	30%	(9%)
Burglary 2008	0	10	15	14	0	7	12	0	29	8	1	3	2	29	7	33	17	11	198
Burglary 2007	9	16	14	17	1	8	12	0	27	6	1	9	4	37	4	46	14	24	249
% Change	(100%)	(38%)	7%	(18%)	(100%)	(13%)	0%	-	7%	33%	0%	(67%)	(50%)	(22%)	75%	(28%)	21%	(54%)	(20%)
Disorderly Conduct '08	3	2	20	10	2	5	17	0	21	21	2	4	1	16	3	23	1	20	171
Disorderly Conduct '07	3	14	18	3	6	7	9	0	14	14	1	6	1	27	4	36	5	15	183
% Change	0%	(86%)	11%	233%	(67%)	(29%)	89%	-	50%	50%	100%	(33%)	0%	(41%)	(25%)	(36%)	(80%)	33%	(7%)

SW Trails

Don Baack, chair, 503-246-2088

We had another good hike in February with 29 hikers. We started out hiking in light snow but no one seemed to mind and everyone finished the 6-mile loop. We started at Hillsdale, walked along Terwilliger to OHSU. We then took the Tram down to the waterfront, hiked along the greenway trail and then back up through Himes Park. It is amazing how much forested and natural area we have in urban SW Portland.

Liability: We continue to work with the Portland Office of Transportation on liability issues for the trails we construct. Some have suggested labeling the trails as "recreational" as this would remove the liability from the property owner according to state law. However, we have some concerns about this. First, it might not work and second state highway funds that have been used for trail construction might not be available as these funds are not allowed to be used for recreational purposes.

We are hoping the city can take the liability of the trails. All the trails we have built are a major improvement to existing conditions. No one has ever filed a suit over any of our trail work and we do not know of anyone who has ever been injured on our trails. We hope this situation can be resolved soon so we can get back to making pedestrian travel better and safer.

Sidewalks: The City of Portland has two full-time and one part-time sidewalk inspectors. However, this may soon drop to zero as the city is considering dropping these positions to save money. They are suggesting volunteer organizations

Next mtg: **Thurs., March 26, 7 pm,**
St. Luke's Lutheran Church library, 6835 SW 46th

such as SW Trails take the place of paid inspectors. Last month we hiked through Johns Landing and found 102 instances of sidewalk problems considered bad enough to be dangerous according to city code. We forwarded those problems to the city. Bad sidewalks are very dangerous and lead to many injuries every year. We hope constructive solutions can be found for this serious problem.

Red Electric trail: Funding for the Red Electric trail made it through the first round of cuts for The MTIP (Metropolitan Transportation Improvement Projects) funding process. The final decision has not been made. The Red Electric proposal would be for the section from 30th to Vermont including a crossing of Fanno creek. The funding would be around \$2 million. There were eight people from southwest testifying last month at Metro in favor of the project. We are hopeful this will be approved as it would be a major improvement for pedestrian/bike travel in southwest.

4T: We have completed the design for the signs for the 4T trail and they are waiting approval from the city.

Pedestrian Rights: Mark your calendars for the April 23rd meeting of SWTrails. We will have Ray Thomas who has written a book about pedestrian rights in Oregon. He will give us a review of the key laws and will lead a discussion on what needs to be changed and how we can do it.

Since we need to plan for the right room for this event, drop a note to Don Baack at baack@q.com if you plan to attend.

Land Use Committee

John Gibbon, 503-708-6708

In February, committee members discussed the Infill Design Toolkit. It's a guide, prepared by the city's Bureau of Planning and Sustainability, for medium-density residential development in existing neighborhoods.

The toolkit gives examples of different housing types appropriate for infill. The toolkit is not part of the zoning code, so it doesn't have the force of law. But it does present some interesting ideas. Committee members liked the idea of variety in housing types. Committee chair John Gibbon saw the toolkit as a response to boring barracks-style rowhouses. Several committee members noted the urban dullness of many eastern U.S. cities. But there were some criticisms. One committee member noted that the model drawings were all on flat sites. Some of the housing types may not work well in hilly

southwest Portland. She also mentioned spacing and landscaping as important components of well-designed sites.

Urban planning students from PSU will help the West Portland Park NA to do an urban planning project for that neighborhood. The purpose is to come up with ideas for a "20-minute community" in West Portland Park. Basically, that means a small neighborhood commercial district that people can walk to for services, goods, and entertainment. The Moreland-Bybee commercial district is a good example, with a movie theater, grocery and hardware stores, and other shops.

Next meeting: **Tuesday, March 17, 7 pm**
Multnomah Center
7688 SW Capitol Hwy

Transportation Committee

Marianne Fitzgerald, 503-246-1847

Keith Liden was our February guest. He reported on the SW Bicycle Facilities Strategy, a plan for a network of bicycle routes in SW Portland. Liden, a long-time bicycle activist, joined with the SW Trails Committee to do the plan. Their hope is that it will be incorporated into Portland's Bicycle Master Plan.

The SW Bicycle Facilities Strategy includes routes that are bicycle lanes or even widened shoulders, but focuses on bicycle boulevards. Liden reported that a large percentage of people are interested in riding bicycles but are afraid to use bicycle lanes, but would use bicycle boulevards. The city may hold open houses this May on the Bicycle Master Plan. The committee plans to take up bicycling again then.

Lots is going on regarding transportation funding. Committee chair Marianne Fitzgerald, on behalf of the committee, wrote a letter to all five of Oregon's congressmen supporting federal funding for reconfiguration of the west intersection of Vermont and Capitol Hwy (the Hoot

Owl corner). The reconfiguration would take out the Capitol Hwy slip lane.

The Red Electric bicycle and pedestrian path is still in the running for funding in another program that distributes federal money: the Metropolitan Transportation Improvement Program (MTIP), managed by Metro. Metro's Transportation Advisory Committee heard testimony in February.

The Hoot Owl corner is not the only segment that needs improvement. The committee is hosting Portland Bureau of Transportation Director Sue Kiel on a Capitol Hwy walk on March 30. The walk will be along that segment from the Multnomah Village viaduct south to Taylors Ferry Rd.

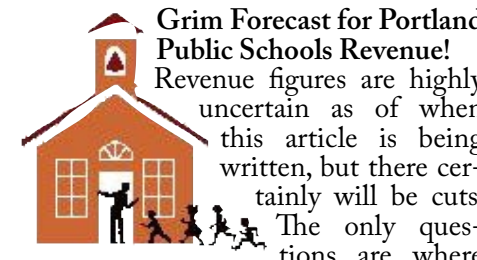
For March, the committee scheduled guests from Metro to talk about high-capacity transit, with a focus on Barbur Boulevard.

Next meeting: **Tuesday, March 24, 7 pm.**
Multnomah Center
7688 SW Capitol Hwy

Committees

Schools Committee

Will Fuller, 503-764-5501



Grim Forecast for Portland Public Schools Revenue! Revenue figures are highly uncertain as of when this article is being written, but there certainly will be cuts. The only questions are where and how deep to cut. Superintendent Carole Smith says "...Portland Public Schools...face very difficult choices" this winter and spring. Stay involved. Visit www.pps.k12.or.us for updates.

Private schools are facing the same sort of money issues, as costs rise and parents' ability to pay drops. There will be more solid information Feb. 20 and later, and the Portland budget will be released March 13. Please stay up to date on the funding issues. Our schools need community support to keep declining revenues from causing declining quality.

School Visits Continue

We visited several schools in February, but there are still some openings. Go to www.swni.org/schools to see which school visits are available. Call SWNI or email schools@swni.org. No charge for a real chance to see our schools at work.

Cultures Count

The schools committee February meeting was focused on cultural issues in schools. Because the meeting is after the press deadline we will have more in the April article on events to share our stories of living in richly multicultural Southwest Portland.

Next meeting: **Thursday, March 19, 7 pm**
Multnomah Center, Room 3
7688 SW Capitol Hwy (at 31st.)

SWNI Board

Brian Russell, president
503-245-0729

The SWNI board is planning a retreat at the Southwest Community Center in March. The retreat will focus on organizational priorities for our six standing committees and service to our seventeen member neighborhood associations. The retreat will also feature a tour of the Watershed Resource Center led by the Watershed Resource Center Outreach Coordinator Jen Seamans.

The board must also consider how to maintain services in light of proposed budget cuts. The Office of Neighborhood Involvement has been asked to submit a 16%, and 18% cut package. Southwest Neighborhood, Inc. could see a loss in communication funds, the neighborhood small grant program, and community engagement dollars. A 18% cut also places our part time outreach coordinator position in jeopardy. (See page 2 for more details)

The SWNI Nominating Committee has begun its process to seek interested parties to fill the SWNI Executive Board positions including: president, first vice president, second vice president, secretary, and treasurer. The board elects new officers at its May 27th board meeting.

Next Meeting:

Wednesday, March 25, 7 pm
Multnomah Center
7688 SW Capitol Hwy

Public Safety Committee

Nancy Hand, chair, 503-452-9483

Our next Public Safety meeting is March 5 at 7 pm at the Multnomah Center. We have a very busy agenda. Commander Reese from Central Precinct will be talking about the reconfiguration of the Precincts in Portland and how it will impact the Southwest.

Our next guest is a speaker from Multnomah Animal Control Services. She will be letting us know what their role is after so many budget cuts.

Stefanie and I did some knocking on doors last month handing out flyers regarding vandalism at Jackson Middle School. Vandalism has increased in the last 6 months to a year. Stefanie put the flyer together and we had very positive feedback from the neighbors we visited bordering Jackson.

The committee is planning a Spring Bicycle Safety Class. See you all at the next meeting!

Next Meeting: **Thurs., March 5, 7 pm**
Multnomah Center
7688 SW Capitol Hwy

Parks Committee

Kirky Doble, 503-246-7970

Nancy Roth, Parks Aquatic Program director, was our first guest at our February meeting. Portland Parks & Recreation has 13 pools, six indoor and seven outdoor. Two are on the west side: the Wilson and SW Community Center pools. In developing the program for a pool, PP&R tries to meet public needs in five categories: fitness, competition, therapy, recreation, and instruction.

Nancy distributed maps showing two- and three-mile service areas around the different pools. Three miles is about the maximum distance people will travel to a public pool. The biggest area showing lack of pool coverage was northwest Portland.

PP&R is trying to make pool operations more efficient and environmentally

friendly. They are using a new filter system that saves water. And they are using ultraviolet light to kill bacteria and viruses, and to break up combined chlorine that makes the stinky, bleachy smell at some pools.

The committee has each year lobbied for extending the opening of Wilson pool later into the summer. But we got bad news. Because of the tight budget, Wilson may close this summer in mid-August. Committee member Margot Barnett suggested staggering the opening and closing of pools, so at least some are open later in the summer.

Next meeting:

Thursday, March 5, 7 pm
Multnomah Center
7688 SW Capitol Hwy

CONTROLLING INVASIVE PLANTS FOR HEALTHY WATERSHEDS

Garlic Mustard



Garlic mustard spring flowers



Garlic mustard in winter

Allaria petiolata

Garlic mustard is a noxious weed.

Garlic mustard's greatest threat is to native woodland wildflowers. It dominates deciduous and mixed canopy forests and displaces most native understory species. It reduces plant diversity and decreases forage for deer. Garlic mustard invading road rights-of-way reduces visibility and increases vegetation control costs.

It is a cool-season herb, native to Eurasia. European settlers brought it to North America.

How Garlic Mustard Spreads

This weed spreads exclusively by seed. Hikers, animals and road maintenance equipment spread garlic mustard seeds. Wind dispersal is minor, however, flowing water in stream corridors can spread the seeds.

How To Identify Garlic Mustard

Garlic mustard is a biennial that forms a basal rosette of kidney-shaped, scalloped leaves in the first year, and an elongated flower stalk in the second year. Leaves are alternate on the smooth stem, sharply toothed with a triangular shape. Crushed leaves produce a distinct garlic odor. Garlic mustard typically flowers in April and May. Plants have one flowering stem with numerous white flowers that have four separated petals. Plant height ranges from 12 to 48 inches. Seeds are black, oblong in rows within a long narrow pod.

Garlic Mustard Look Alikes (please don't pull these native plants)

Fringecup, *Tellima grandiflora* - watch for hairy leaves and stems
Piggy-back Plant, *Tolmiea menziesii* - watch for hairy leaves and stems
Wild Ginger, *Asarum caudatum* - watch for glossy, dark green leaves

Controlling Garlic Mustard

You can pull out small patches by hand or spray with herbicide. Pulled material will complete flowering and set seed so be sure to bag pulled plants and put them in the garbage. Mowed plants will re-grow and set seed, so don't rely entirely on mowing as a method of control. Clean your shoes after hiking in areas with garlic mustard plants so you don't spread garlic mustard seeds on your next hike.

Information source: Oregon Department of Agriculture Garlic Mustard brochure



Controlling Garlic Mustard

working for clean rivers, healthy watersheds, and a livable, sustainable community

FANNO CREEK WATERSHED



Fanno Creek Watershed Garlic Mustard Treatment

Neighborhood associations in the Fanno Creek Watershed - Bridlemile, Hayhurst, Hillsdale, Maplewood, Multnomah, Ashcreek, Crestwood, Far Southwest, SW Hills Residential League

Current Program and Partners

In 2007, Clean Water Services surveyed the Tualatin River Basin for garlic mustard. A significant portion of the infestation was outside their boundary in the City of Portland. The survey found garlic mustard on roadsides and along streams in the headwaters of Fanno Creek and its tributaries Pendleton, Vermont, Woods, North Ash, South Ash, Restoration and Bridlemile creeks.

In 2008, Portland's Environmental Services teamed up with Clean Water Services to work on garlic mustard eradication. Clean Water Services contacted property owners along Fanno Creek and its tributaries requesting permission to look for and spray garlic mustard on their property over the next five years.

In 2009, Environmental Services and Clean Water Services would like

to continue this partnership. If you are a streamside property owner in the area mapped above and you have not yet signed up to have your property inspected and treated, please call Jennifer Goodridge at Environmental Services, 503-823-4899.

Tryon Creek Watershed Garlic Mustard Treatment

Neighborhood associations in the Tryon Creek Watershed - Multnomah, Markham, West Portland Park, Marshall Park, Arnold Creek, Collins View, South Burlingame

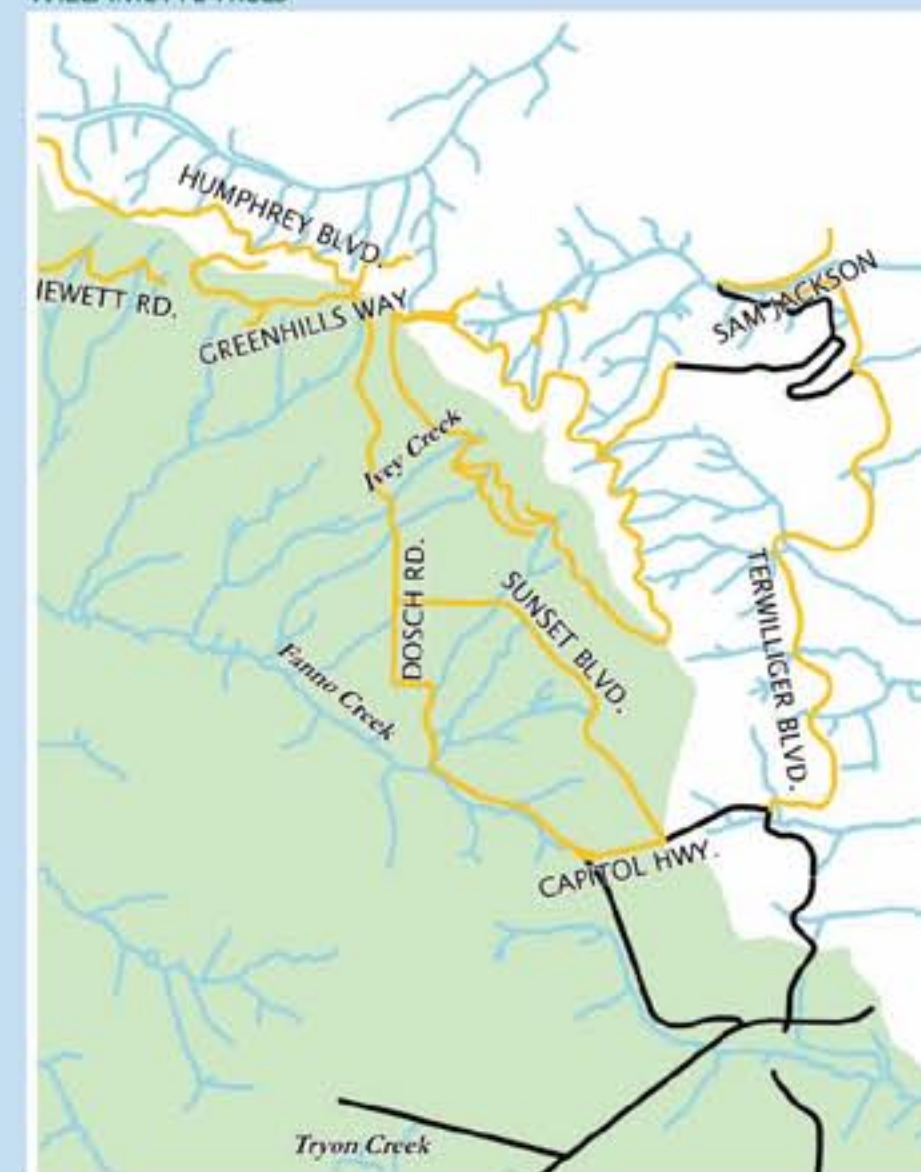
Current Program and Partners

In spring 2009, Environmental Services staff and licensed contractors will treat roadside garlic mustard infestations along Boones Ferry Road, SW Lancaster, SW Arnold and SW Capitol Highway. Volunteers with the Friends of Tryon Creek State Park will map and remove garlic mustard in Tryon Creek State Natural Area. Portland Parks staff and volunteers will remove garlic mustard in Marshall Park and Foley Balmer Natural Area.

MAPS LEGEND - Garlic Mustard Treatment

- watershed within City of Portland
- streams
- proposed treatment areas:
 - roads
 - streambanks
 - roads with no treatment

WILLAMETTE HILLS



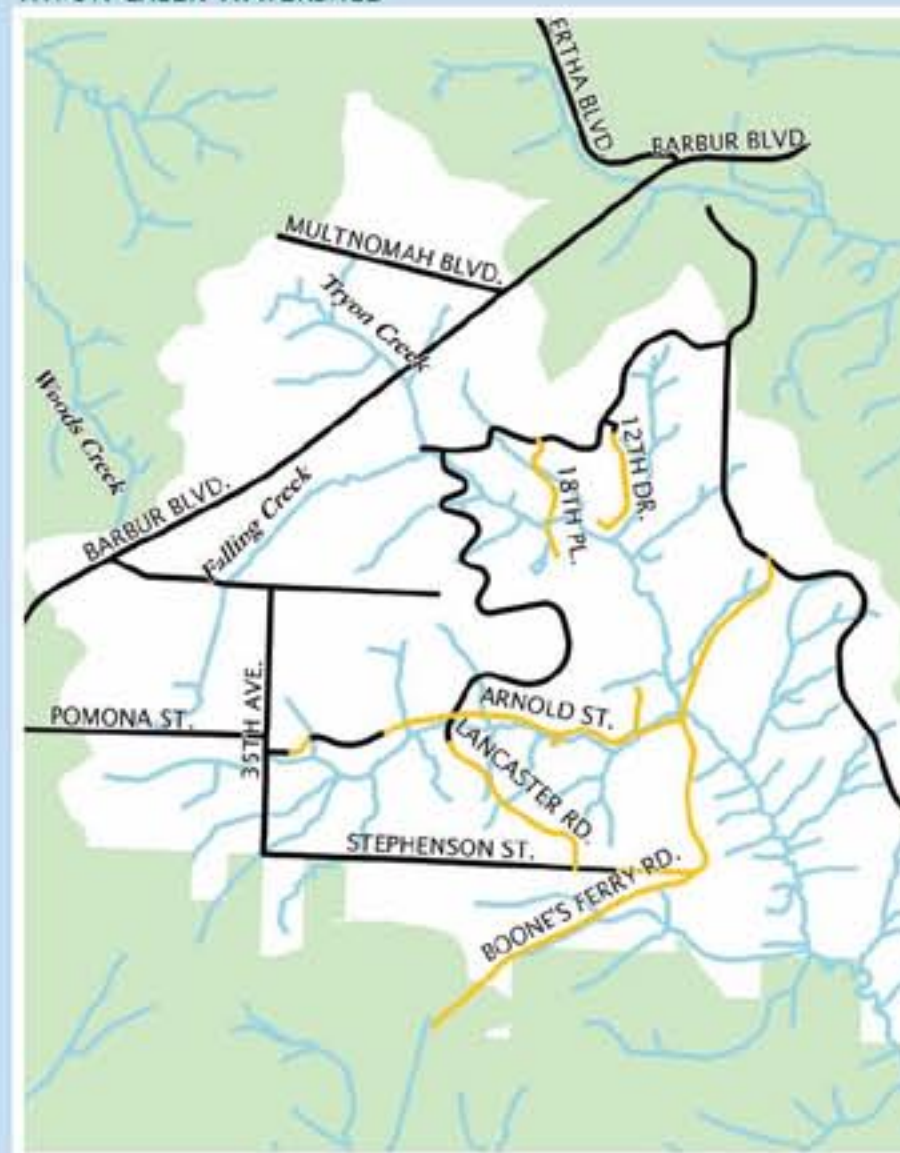
Willamette Hills Garlic Mustard Treatment

Neighborhood associations in this watershed - Hillsdale, SW Residential League, Homestead, South Burlingame, South Portland, Collins View

Current Program and Partners

The West Willamette Restoration Partnership (WWRP) is a collaborative effort between the Three Rivers Land Conservancy, City of Portland and local and volunteer organizations to control invasive weeds. WWRP's focus is West Hills forests from Forest Park to Tryon Creek State Park and along Terwilliger Boulevard. WWRP is working to control garlic mustard in the road right-of-way and stream corridors as noted on the map. From April through June, expect to see contractors working for WWRP on garlic mustard control. These are licensed contractors using treatment methods consistent with the City of Portland Integrated Pest Management Strategy. They will be both hand pulling and applying herbicide.

TRYON CREEK WATERSHED



How To Get Involved

- ✓ Hand pull plants in your yard, streamside or in the adjacent right-of-way. If there are no garlic mustard plants in the right-of-way in front of your house, then the contractors will not treat that area. See page 1 of this article for proper disposal.
- ✓ Join a work party to pull garlic mustard in our city parks and natural areas. Learn how to identify the plants from professionals and have fun working alongside your neighbors. See a list of contacts on page 4.
- ✓ Report new locations of garlic mustard. If you see garlic mustard somewhere other than noted on the maps above, please report it to Mitch Bixby 503-823-2989 or mitch.bixby@bes.ci.portland.or.us.



Portland - Let's do our part!

Returning Healthy Plant Communities to Portland

The City of Portland has developed an invasive plant management strategy to improve the health of our natural areas. If fully funded, the goal is to remove invasive plants from 4,000 acres, or 40% of city-owned land, in the next 10 years. Here is some information about how the city plans to enhance plant communities:

Portland Parks and Recreation is working to protect the highest quality parks habitat by removing small patches of invasive plants. Between January 2007 and December 2008, Parks removed invasive plants from over 1,200 acres of high quality parks to keep these areas in good to healthy condition.

Environmental Services has developed an early detection and rapid response program to remove small patches of highly invasive plants. These efforts are aimed at removing new invaders before they become established.

The Environmental Services Watershed Revegetation Program removes invasive plants and installs native plants on at least 70 acres per year. In the last three years, this program has revegetated an average of 320 acres per year. Each site is managed for at least five years to remove invasive plants and install native vegetation.

Each year, Portland Parks and Recreation staff organizes over 70,000 volunteer hours of work on natural area stewardship projects. The Environmental Services Clean Rivers Education Program involves about 6,500 students per year in classroom and field exploration, site assessment, and watershed health education.



ENVIRONMENTAL SERVICES
CITY OF PORTLAND
working for clean rivers

Dan Saltzman, Commissioner
Dean Marriott, Director

GARLIC MUSTARD IN OREGON
■ abundant
■ limited distribution
■ not known to have



source: www.weedmapper.org



Get Involved!

Take a Naturescaping for Clean Rivers workshop.
Call 503-797-1842 for details.

Join or volunteer with a local watershed project.

- Portland Parks West Side Volunteer Coordinator Rachel Felice, 503-823-9423
- Bridlemile Creek Stewards Steve Mullinax, 503-768-9065
- Three Rivers Land Conservancy Backyard Habitat Certification Galen Beatty, 503-699-9825
- West Willamette Restoration Partnership Volunteer Coordinator Amanda Wilson, 503-699-9825
- Stephens Creek Stewards Robin Vessey, 503-293-1069 or jack-robin@spiritone.com
- Tryon Creek Watershed Council Terri Preeg-Rigsby, 503-244-1827
- Friends of Tryon Creek State Park 503-636-4398
- Friends of Vermont Creek at the SW Watershed Resource Center Jennifer Seamans, 503-823-2862
- Friends of Woods Park Kevin Duff, 503-998-9417
- Friends of Dickinson Park Tony Hansen, 503-246-4656
- Multnomah Gateway Project - Randy Bonella, 503-803-5963

Apply for a Community Watershed Stewardship Grant.
Call Kate Carone at 503-823-7917 for more information.

Arnold Creek

Next Mtg: Tuesday, March 10, 7 pm
Antioch Christian Fellowship 10558 SW 35th (lower level)
Chair Nancy Hand, 503-452-9483, enchand@hotmail.com
arnoldcreek.swni.org

Our next meeting will be March 10 at 7 pm at the Church across from Jackson Middle School.

Last month I received a call from the city, stating that the speed reader sign on Boones Ferry will be hooked up and working by the end of February. They said they ran into problems with the power source and that is why it is taking so long. After all signs are working, they will do some advertising to let everyone know about them.

It is that time of the year when we need to have elections

for the neighborhood. At our March meeting, we will have nominations and we will vote in April. I hope we can fill all our spots this year.

We still need a transportation and a land use representative. We also need a representative from The Farm. The other positions are president or chair, vice president, secretary, and representatives for trails, schools, parks, public safety, and NET.

Hope to see lots of smiling faces ready to get involved in their neighborhood!

Ashcreek

Next Mtg: Monday, March 9, 7 pm
Multnomah Center, 7688 SW Capitol Hwy
Chair Jack Klinker, 503-246-7872 jklinker@ease.com

People: The Ashcreek Neighborhood Association has a long and glorious history. We have worked very hard over the years to accomplish our goals. While our meeting attendance is up, we have pretty much had the same core group of officers for many years. None of us is getting any younger. If you are looking for something to do to get more involved please start coming to our monthly meetings.

We need representatives for trails, crime prevention, schools and for the citizens advisory committee for the new Engine 18 Fire Station. We will be having elections this spring and president, vice-president, secretary and treasurer are all up for election. Our secretary has been taking our minutes for a decade.

Multnomah Pressure Sewer Line: While construction is still slated to begin in the fall, smaller projects are starting to commence immediately. I was stopped on Multnomah Blvd a week ago while BES was doing some preliminary repair work.

We can only hope that they have an adequate traffic control plan in place by fall.

To minimize traffic and reduce overall construction time,

BES is asking the city for a permit to allow construction around the clock. I'm pretty sure they didn't ask us what we would prefer. I guess they think that keeping people awake along Multnomah Blvd is not a bad thing.

Smith School: Riverdale has submitted its paperwork for a conditional use permit so that they can use Smith as a school. We will be asking for traffic control and access at the CUP hearings. Riverdale has been very receptive to all our suggestions and concerns during talks over the last several months.

We have just asked the Portland Public Schools for a gravel path along the west and south sides of the athletic fields. This will allow neighbors to use the field and stay away from the playgrounds if they are being used. It will also allow people to circumambulate the fields at other times. The proposed path should get rid of the swamp on the south side behind the baseball diamond. We will be looking for funding from Portland Parks, PPS, Riverdale and neighborhood grants from the city.

We hope to have a Smith School visit this spring.



Kopp Construction Co.

CCB # 71090

Building Green

Remodels/New Construction
Commercial
Tenant Improvement

503-357-8810

www.koppconstruction.com

Neighborhood Reports

Bridlemile

Next Mtg: Wednesday, March 11, 6:30 pm
Bridlemile School, 4300 SW 47th
Claire Evans, eclaire27@comcast.net, 503-452-7648
and Ginger Danzer, ggdanz@comcast.net, 503-292-9460
http://bridlemile.swni.org



Celebrate
Bridlemile's 50th Birthday
Wednesday, March 11th 2009
6:30-8:30
in cafeteria

Visit with alumni, former teachers, and principals
Meet current students, parents, staff, and neighbors

Program includes welcome from Principal Tanya Chattas,
an introduction of past principals and teachers,
a historical slideshow and sing along
followed by cake and visiting

Sponsored by Bridlemile Elementary School, PTA, and
Bridlemile Neighborhood Association
Questions? call Ginger Danzer, 503-292-9460, ggdanz@comcast.net



Turn Hamilton Park green for St. Patrick's Day

Join your Bridlemile Creek Stewards

Remove invasive weeds

Make a better home for wildlife
and native plants like trillium, vine maple and wood roses.

Saturday, March 14th, 9 am-noon

Meet at the tennis courts area. Dress for the weather.
Details call 503-768-9065/503-246-2714 or www.bcs.swni.org
Located next to Bridlemile School on SW 47th Drive
north of Hamilton St.

February meeting recap: Bridlemile was shared; Scott Foster, Portland Police Officer, gave an update on safety and criminal activity in our area; Steve Strauss reported on Spruce-up Hamilton project activities; information that Portland is being considered as a national mode for good parks was reported by Greg Schifsky.

Regular Bridlemile Creek Stewards monthly meeting, Tuesday, March 10, 7 pm, Watershed Center conference room in the SW Community Center, SW 45th & Vermont.

Help plan stream restorations for the season.
Call Steve 503-768-9065 or Greg 503-246-2714 for details.
www.bcs.swni.org

Collins View NA Triage Training

Your Emergency Training may mean the difference between life and death in a disaster. Learn new techniques, or update your Neighborhood Emergency Training Skills with the class, "Simple Triage and Rapid Treatment (S.T.A.R.T.)"

Triage is the first step in disaster medicine. The goal of triage is to do the greatest good for the greatest numbers. Collins View Neighborhood Association invites its neighbors to participate in "S.T.A.R.T."

This free two-hour class is scheduled for
Wednesday, March 11, 7 - 9 pm
Riverdale High School
9727 SW Terwilliger Blvd.

Classes limited to 20 people.

Register early!
Contact Maryellen Read, maryellenread@gmail.com, with TRIAGE CLASS in the subject window.

Collins View

Next Board Mtg:
Wednesday, March 4, 7 pm
Riverdale High School
9727 SW Terwilliger, Rm 201
Prakash Joshi,
CVNAmail@gmail.com

Crime, Public Safety, Problem Solving Committee: Stefanie Adams, ONI Crime Prevention Specialist, reported that several types of criminal activities decreased when compared to 2007: burglaries; larceny (theft in general: pick pocketing, bike theft, shop lifting); theft from vehicles; and vandalism. However, disorderly conduct increased from 3 to 10 incidents.

CPR class: Portland Fire Bureau's Dave Paul presented "CPR for Friends and Family." Fireman Kevin Shanders directed eleven neighbors in a hands-on instruction/practice.

Triage will be an important activity in the event of a major natural disaster. Marcel Rodriguez will offer a class, "Simple Triage and Rapid Treatment (S.T.A.R.T.)." It is tentatively scheduled for 7 pm Wed, March 11, at Riverdale HS. Maximum class size is 20 people. Register early (email maryellenread@gmail.com with TRIAGE CLASS in the subject window). More details will follow.

Land use: Terry Black from the water bureau spoke, seeking public input on the Fulton pump station improvement project options. To read more and submit comments, go to www.portland-online.com/water/fulton.

The lot at 436 SW Primrose will be divided into 3 lots. In this decision, the city has responded to concerns from neighbors and CVNA.

David Ellis reported that L&C is working on the city's requests for more information to complete their master plan. The final report is close to submission. If it gets in by Friday, Feb. 13, a hearing may occur before late March.

Transportation: On Wednesday, April 15, L&C will encourage neighborhood use of buses in our neighborhood (the shuttle will continue to run for law students, others) to demonstrate our need for better bus service. L&C will also encourage enforcement of parking rules in the neighborhood on that date. Their board is likely to consider stopping their Sellwood Shuttle to save \$128,000/year.

Be aware that coyotes are in our neighborhood. Be sure pets are inside, especially at night.

Sue Ann Higgins reported that Riverdale district and PPS are in discussions to make Smith Elementary a temporary site for Riverdale Elementary students (K to 8). Current plan is for a 15-month build out for a new Riverdale Elementary School, starting June 2009, ending fall 2010 (demolish and rebuild on same site—school board sees no way to re-build the current school building with "green" building codes). Ashcreek Neighborhood Association is very involved.

Neighborhood Reports

Far Southwest

Next Mtg: Tuesday, March 17, 7 pm
Comfort Suites Motel, SW 60th & Barbur
Chair Marcia Leslie, 503-246-9938, mmac_les@yahoo.com

In the February SW News, you saw the front-page story about the water bureau seeking a new site for the pump station. Tim Hall from the water bureau attended our January meeting and gave a great presentation on the existing site and options for replacing it. The consensus favored Option 2, from an economic standpoint as well as the lessened disruption to the residents affected.

Also at the January meeting we had a list of "possible speaker's topics" and asked folks to mark topics of interest and return the list to the March meeting. For those who did not attend, please email Marcia with your choices from the following:

1. Portland Parks & Recreation on dogs in parks (on-and off-leash areas).
2. Multnomah Co. Animal Control on neighborhood pet issues.
3. Multnomah Co. on bridges -- repair, maintenance, replacement.
4. Multnomah Co. "101" -- overview of services provided by county bureaus.
5. Port of Portland -- airport, and/or industrial development, and/or marine terminals.
6. Community courts.
7. Housing options for seniors.
8. Street maintenance with less money.

9. Bureau of Development Services (BDS) -- intro to design overlay (purpose, regulations, process of design review).

10. BDS -- requirements for land divisions.

11. BDS -- lot confirmations and lot lines.

12. BDS -- buyer's education -- what you need to know before you buy -- permit history, zoning & land use regulations.

13. PP&R/urban forestry -- street tree removal and planting guidelines.

14. Living green in your home and yard.

On another note -- if you haven't already picked up your phone books that were left on the street near your mailbox, please do so as soon as possible. If you don't want them, please put them in the recycling. Our streets look like they need a litter patrol.

As requested before, please be sure we have your email address -- repair, maintenance, replacement, and minutes for the NA meetings, as well as timely announcements of upcoming events and an occasional special crime alert. We often learn (after a NA meeting) about events/meetings/hearings that will occur before our next meeting, and want to give you the choice of whether or not to attend. Your address will NOT be shared or distributed. It is solely for NA communication.

Hayhurst

Next Mtg: Tuesday, March 10, 7-8:30 pm

Hayhurst School, 5037 SW Iowa

Chair Janet Hawkins, 503-244-7703, janetchawkins@msn.com
www.neighborhoodlink.com/portland/hayhurst

Hayhurst Neighborhood Association is currently meeting on an "every-other-month" basis. Our March 2009 meeting will include the following items:

- Report on the city's Bicycle Facilities Strategy for Southwest Portland
- Discussion about the proposed improvements to SW Vermont & 30th
- Update on Red Electric Trail
- Report on SW Hope's "Feed the Hungry" campaign for spring 2009
- Update on recruiting for additional neighborhood association officers and committee chairs

Convening a planning group for National Night Out gathering, which will be held in August

Our next Hayhurst Neighborhood board meeting is scheduled for 7 - 8:30 pm, Tuesday, March 10, 2009 at Hayhurst School. Hayhurst is located at 5037 SW Iowa. We will be meeting on the same night as the Hayhurst PTA and will jointly provide childcare for parents who are attending the PTA or neighborhood association meeting.

Please RSVP for child care requests to Hayhurst's chair, Janet Hawkins, at janetchawkins@msn.com or call 503-244-7703.



Change your clocks on March 8th

Hillsdale

Next Mtg: Wednesday, March 4, 7 pm
St Barnabas Church, 2201 SW Vermont
Chair Don Baack, 503-246-2088 baack@q.com, www.hna-pdx.com

Traffic calming gets banner billing at March's meeting. Then it's on to the eradication of invasive species in Himes Park and the final report on SERA's implementation study of the Hillsdale Town Center.

Neighbors will hear an update on the effort to get speed bumps on Capitol Hill Rd, as well as a discussion about traffic calming on SW 18th from Capitol Hwy

to Sunset. Neighbors in both areas have complained about traffic problems.

Willamette West Coalition and Portland Parks representatives have been invited to present plans to restore Himes Park, freeing it of invasive species.

The SERA firm's Town Center report will focus on recommended changes in the "Sunset Triangle" to the north of SW

Capitol Hwy. The report addresses street rights-of-way, small public plazas and an envisioned extension of DeWitt Park and DeWitt Street.

In a related matter, on Tuesday, March 17, Timothy Smith of SERA will give a free presentation titled, "Civic Ecology: A Framework for a Sustainable Hillsdale," 7 pm, at The Watershed (Bertha Ct and Capitol Hwy).

Homestead

Next Mtg: Tuesday March 3, 7 pm, OHSU CDRC, 707 SW Gaines, 3rd floor
Chair Susan Egnor, stegnor@comcast.net, 503-221-6981, HomesteadNA.org

Plant preservation ivy pull March 7, along Terwilliger Creek: Join us as we liberate more of our native plants along Terwilliger Creek. Meet at 9 AM at the bathrooms by Terwilliger Parkway and SW Hamilton Street. Dress for the weather. Snacks, gloves and tools will be provided. All ages welcome.

February Meeting Report **Fulton Park Water Pump:** Portland Water Bureau's Tim Hall told us about the proposals for this project. (Details in February SWNI News and water bureau's website.) Those present generally supported a proposal to build the new pump station in Willamette Park but were very concerned the process did not include a) what's to be done with existing building (put off until unknown later date) and other costlier piecemeal planning; b) protecting existing trees from construction damage; and c) what to do with \$600,000 saved by not rebuilding on the existing site.

Portland State Citizen Tree Project: Students Rob Chapman and Val Branneis explained this environmental research project. It will help monitor the effects of climate change on the growth and life cycle of Portland trees. They need homeowners who

have Douglas fir and/or big-leaf maple trees to volunteer. The students apply a measuring band that stays on the tree. The homeowners help by taking readings (instruction provided) about three times a year and adding to the database. If interested, please contact them via valanceb@pdx.edu.

Trauma Intervention Program: Maggie Yates, our Crime Prevention and Public Safety representative, reported on the Trauma Intervention Program (TIP) in which she's become a volunteer. TIP trains adult and teenage volunteers to help counsel people emotionally upset by emergency situations. TIP volunteers helped in the aftermath of the recent teen nightclub shooting, natural disasters, fires, and other traumatic situations across the city. See www.TIPNW.org for more information.

Regular reports: **Transportation:** Anton Vetterlein reported OHSU is still not ready to sign the agreement on the Marquam Hill meter revenue allocation process. Southwest is working to get LEED Platinum certification under its Bike Plan. The Barbur Boulevard Streetscape plan will be revisited. We need somebody who can keep track of all

that's happening in this area for us: matters such as high-capacity transit on Barbur Boulevard, sidewalks, crosswalks, and other concerns. Please call Susan Egnor if you can help.

Land Use: Anton Vetterlein reported Friends of Terwilliger will start again to get funding and approval for an interpretive sign near the bathrooms at SW Hamilton and Terwilliger.

Schools: Rich Davidson reported the SWNI Schools Committee is encouraging neighborhood residents to tour local schools. Our neighborhood public schools plus area private schools are participating. Our public schools are Ainsworth Elementary, West Sylvan Middle School and Lincoln High School. To join a tour, contact SWNI at 503-823-4592 or email schools@swni.org.

New Items: Keith Claycomb requested input on parking and transportation issues on Marquam Hill for the OHSU parking committee.

Feb. meeting: We gathered around a large table, munched cookies, drank cider, listened, learned, debated and opined on matters that will make a difference to our neighborhood. Join us on March 3rd; the treats are very good and you can make a difference!

Markham

Next Mtg: Tuesday, April 14, 7 pm
Capitol Hill School, 8401 SW 17th
Chair John Gibbon, 503-708-6708

jtorgoryun@aol.com, http://www.wescorhvac.com/Markham.htm

We will have a subcommittee meeting on March 11, 7 pm, at the SWNI offices to discuss a neighborhood decision to go inactive or divide and merge with adjoining neighborhoods. At this time, the most likely candidates for merger appear to be West Portland Park and South Burlingame.

A land use notice has been received for a proposed redevelopment of the house at 3103 SW Huber (the "Tiger house") for neighbors who have been around a bit). The developer's original proposal was to create a flag lot for a second house like several other lots along Huber. Apparently the city staff identified problems with storm drainage and tree removal in that proposal. The developer is now proposing to create three narrow or skinny lots that will be developed with one common wall building with two dwellings and a separate single narrow house. The three homes will share a single driveway and parking area. This proposal will require adjustments to the setbacks required

for dwellings in the underlying zone and to permit more paving in the front yard. This plan is intended to permit retention of more trees along Huber. The rear portion of the lots will retain most of their current trees and have drainage improvements installed to deal with the runoff from the driveway and parking area. Comments on the proposal are due back to the city on March 11; questions and comments on the proposal can be directed to jtorgoryun@aol.com.

The parks department's request for a grant to construct an approved trail through Maricara Park did not make METRO's first cut for funding. We have contacted METRO staff to determine whether the agency has policy related to creating a bike "friendly" (not paved) trail in a natural area. Discussions between the interested neighbors, neighborhoods, SWNI committees and government agencies will continue so that we can solve the problems created by the social trails in the park.

April Hill Park now has signs



On February 11, Portland Parks and Recreation installed April Hill Park's long-awaited park signs. One neighbor said, "I am tickled pink."

Maplewood Neighborhood wants to thank Don McTaggart and Terry Davis for getting the signs for us. Thank you.

Marshall Park

Next Mtg: Thursday, March 12, 6 pm
Capitol Hill Elementary School library, 8401 SW 17th
Chair Mike Charles, 503-244-6099, marshallparkchair@swni.org, marshallpark.swni.org

1. FULTON PUMP STATION: Tim Hall from Portland Water Bureau, presented the options for replacing the old Fulton Pump Station

on Nevada Ave. Maija Spencer from Portland Parks was also at the meeting. The preferred option is to rebuild the pump station in Willamette Park. They are seeking community feedback. There was a public meeting on February 21st, at the Portland French School, 6318 SW Corbett.

2. CAR CRIME: At least three cars were broken into in our neighborhood recently. This is a wake-up call against complacency. To keep our neighborhood crime-free, we need to be careful and vigilant, especially during these grim economic times when crime increases. So lock your cars and homes, keep lights on, pick up mail and newspapers, and get to know your neighbors! We are only as safe as those around us. We need to watch out for each other. Please encourage your neighbors to join your neighborhood e-mail list so they can receive crime alerts.

5. ABANDONED CAR: Another neighbor reported an apparently abandoned car in the area. For this sort of thing, call the nuisance line at 503-823-7306. These phone numbers are available on the Marshall Park website.

6. MARCH MEETING: We will discuss Marshall Park Habitat and Trail Plan (see page 3 for details).

Multnomah

Next Mtg: Tuesday, March 10, 7 pm
Multnomah Center, 7688 SW Capitol Hwy
Chair Randy Bonella, 503-293-9460 mbonella@comcast.net

Hi, neighbors!

I hope that the first month of the new year has treated everyone well. We had a good crowd at our February meeting with a strong contingent of neighbors from Capitol Hill Road on hand to voice their support and/or opposition to a street-calming proposal for Capitol Hill Road. Portland Department of Transportation gave a nice overview of the process and design for speed tables. These are similar to speed bumps but wider and flatter that allow the traffic to move near the posted speed limits. There will be another neighborhood meeting to address this at an as of yet un-set date.

We had two other major focus areas, one surrounding two Capitol Highway projects and the other on land divisions and type II land use reviews. As part of the new stimulus package proposed by Congress, a rework of the Hoot Owl merge of Capitol Highway, Vermont and SW 30th come together could be fast-tracked for rework. This is a 13-year-old design and one which the neighborhood should readdress. The second fast-track project could be Capitol Highway between Taylors Ferry

3. MARSHALL PARK NOTICE BOARD: Plans are under way to install a notice board in the center of the park. This will be a meeting point, and an information center for park users and neighbors. The goal is to have the notice board in place by the end of February. This was made possible by the grant we received from SWNI.

4. MARSHALL PARK SAFETY: Neighbors expressed concerns about some suspicious activities in the park - involving a group of young men congregating some afternoons. We want this park to be a safe place for everyone. If you observe anything suspicious, please do not confront these characters. Take notes (license plates are especially useful) and contact the police non-emergency number 503-823-3333.

6. MARCH MEETING: We will discuss Marshall Park Habitat and Trail Plan (see page 3 for details).

6. MARCH MEETING: We will discuss Marshall Park Habitat and Trail Plan (see page 3 for details).

Road and Multnomah Village. This is a design that has been in the works for a number of years with preliminary engineering mostly complete. We should know more in the next month or so. Over the past couple of months we have seen a dramatic increase in type II land use reviews for lot divisions. Many of these are requiring other changes such as setbacks to be part of the allowance criteria. So far the land divisions are within normal and accepted guidelines with requests for allowances only on existing structures. If you have been notified of a zoning issue and you have concerns, your neighborhood association may be able to help.

Next month we have a pretty full agenda. We are expecting an update on Sears Armory, Housing Authority of Portland will be making a presentation on planned redevelopment of Hillsdale terrace, updates on Capitol Highway and possibly an update on Capitol Hill Road traffic calming. Our final topic will be to start planning the 4th season of Multnomah Outdoor Cinema.

Please join us and get involved with your community.

Neighborhood Reports

Maplewood

Next Mtg: Monday, March 9, 7 pm
Friends School, 7426 SW 52nd
Chair Alexander Ben Israel, 503-467-9016 chair@maplewoodna.com, www.maplewoodna.com

Maplewood welcomed two speakers from the City of Portland Bureau of Environmental Services. Stephen Syks and Daniel Herbert updated Maplewood neighbors on the proposed rework of the sewer system along the Fanno pressure line. This work is expected to begin in September 2009 and will impact traffic on Multnomah Boulevard between 69th and 31st. In order to meet construction completion deadlines, the project managers are requesting a noise variance to allow construction hours to extend into the night between 7 pm and 6 am from September through November of 2009 and from February to September of 2010. The project is slated for completion in 2011.

Stephen and Daniel explained the urgency of replacing the leaking and rapidly failing plastic pipe with two metal pipes to meet current and future needs for stormwater management. They also described traffic rerouting, work-around and signage options, noise mitigation plans, and asked for feedback on both. Traffic will be detoured onto local streets off of Multnomah for nearly a year. Neighbors expressed serious doubts about how to safely mix increased car traffic with walkers

and bicyclists on narrow streets with no sidewalks. Neighbors were encouraged to weigh in by contacting Stephen directly and by attending the public hearing on February 11. Neighbors who live within a few blocks of Multnomah Blvd. should have received notice, but anyone in the area with concern about traffic snarls or noisy nights should contact Stephen at Stephen.syks@bes.ci.portland.or.us.

Officer Scott Foster updated us for the month. There were 18 valid calls, a mix of minor infractions and marijuana incidents. The group also discussed the hiring freeze and the planned precinct changes including the proposed closing of the North Precinct in St. Johns. Foster reminded us that back in 1979 there were 430 filled positions at the Police Bureau. We are now down to 330 with twice the population. Public comment on the police bureau budget will occur on February 24th at the Multnomah Arts Center.

Ongoing business this month included approval of new all-weather signs to announce our meetings. The park was blest

with an additional permanent trash can and two beautiful signs that say "April Hill Park." (picture on left)

Transportation mentioned that the upcoming federal stimulus package might land some additional funding at our door for "shovel-ready" projects like the upper end Vermont Street sidewalk and a bike path in the area. Stay tuned!

The picnic committee will hold the first planning meeting on February 26. The group hopes to quickly set a date for this summer event.

Our next neighborhood meeting is a big one -- the annual board election and dessert potluck (so we have sweet thoughts as we check our ballots).

If you are interested in having a say in how projects develop in your area or simply want to learn more about your neighborhood, we encourage you to join our monthly meetings.

Maplewood Neighborhood Association meets on the second Monday each month. Our next meeting is March 9 at 7 pm, in the Community Building of the West Hills Friends Church, across the street from Maplewood School at 7425 SW 52nd Ave.

SW Hills Residential League

Next Meeting: Wednesday, March 18, 7 pm, Ascension Episcopal Church 1823 SW Spring St.
Chair Jim Thayer, 503-220-0755, jim@thayers.org, swhrl.org

SWHRL Weighs in on City's Proposed Tree Policy

SWHRL supports the work and recommendations outlined in the proposed document.

Following SWHRL's tree policy forum in April, 2008, the city convened a taskforce to address the myriad regulations and sundry agencies that all had something to say on this issue. I think it also surprised even the city that so many agencies had regulations that affected the management of our trees.

A few weeks ago the taskforce circulated a draft tree policy for neighborhoods to review. Since SWHRL is deeply affected by the management of our tree canopy, the health of our street trees, the stability of our slopes and has an interest in maintaining our view corridors, our land use committee reviewed the policy with some thoroughness. Since this is an issue that many neighbors are concerned about, we thought it propitious to share our recommendations with you. Here's a brief summary of what we recommended to the taskforce:

1. We applauded the work of the taskforce and its effort to clarify this Gordian knot of tangled regulations. And we appreciate the difficulties inherent in streamlining the regulations, codes and definitions of a half dozen bureaus.

2. We strongly encouraged that the tree policy be simplified (after the internal regulatory processes are aligned and unified) so that it can be presented to the public in a clear and concise manner. While we recognize the complexity of the entire set of regulations, it is imperative that they be conveyed with clarity if they are going to make a positive impact.

It appears that these policies can be roughly segregated into two groups. One group of issues seems to relate more to "maintenance" affecting currently standing trees. These rules need to be presented simply, clearly and disseminated broadly. Rules relating to trees impacted by proposed development are more complex and require more flexibility to cover a wide range of situations. These procedures and guidelines need to provide flexibility for landowners, consideration for neighbors, and underscore the valuable ecosystem services rendered by a healthy tree canopy -- especially significant older trees. Together these concise rules for existing tree maintenance and the equitable processes for addressing trees in the context of development can form the basis for the "clear, cohesive regulatory framework" that the taskforce set out to achieve. Perhaps these two sets of policies, although unified in purpose, can be presented in parallel, and using outreach and communications approaches suited to their respective audiences.

3. We recognized that the regulating of trees on private property is a controversial issue. Most of the controversial decisions concerning tree removal in SWHRL have occurred on PRIVATE properties, where absence of regulatory guidance has done little to preserve valuable tree cover, has not protected neighbors, and has largely ignored down-slope erosion issues. Because many landowners see such regulation as intrusive, it would be advisable for any policies regarding private trees to provide owners with options that encourage thoughtful maintenance (pruning and trimming), while reserving the burden of stricter regulation for those ac-

tions that are irremediable such as actual tree removal. It would be preferable that the city use a "carrot" of guidelines to encourage appropriate maintenance and reserve the "stick" of regulation only where significant "common value" is impaired.

The city's comprehensive urban forestry policy should apply flexibly to all larger native trees whether on public, private, residential, commercial or development lands.

4. In addition, we saw a major loophole that needed to be closed. Many clearcuts and tree removals occurred for "speculative developments," which were subsequently not developed, or where tree preservation was not considered part of the overall plan for the site. In these difficult economic times it is easy to see how wide swaths of land could be denuded and not developed for decades to come. In such cases, clearcutting reduces our canopy and increases surface water run-off and erosion when development or landscaping does not occur before the next wet season. Such situations should be prevented.

These are the major recommendations that the SWHRL presented to the city taskforce drafting the consolidated tree/urban forestry policy. We believe that these recommendations represent a balanced approach blending clarity on matters of simple maintenance with a more fluid approach for developments. Recognizing the contribution that trees make to their wider environs, the suggested rules impose broader constraints, but they balance that with a more streamlined approach to encourage maintenance rather than fatal truncation or tree removal.

Crestwood

Next Mtg: Wednesday, March 11, 7 pm
West Portland United Methodist Church library
4729 SW Taylors Ferry Rd
Chair John Prouty
503-246-7366
johnprouty@qwest.net
http://crestwood.swni.org

Crestwood did not meet in February (we meet every other month, on odd months).

Topics for our March 11th meeting will include:

- Nominations for 2009-2010 board: all three officers positions; and three of the four board positions will be up for election (two are currently vacant)
 - Neighborhood Action Plan
 - Nominations for Volunteer of the Year
 - Planning for Dickinson playground dedication celebration
- Hope to see you in March!

A.L.F. SOLUTIONS
"Handypersons Extraordinaire"
Install · Repair · Improve · Embellish
Dependable · Accountable · On Time
www.ALFSolutions.com
Licensed · Bonded · Insured
503-706-7654
CCB#151695
Residential · Industrial · Commercial

South Portland



Next Mtg: Wed., March 4, 7 pm
Umpqua Bank, 3606 SW Bond
Chair Ken Love, 503-245-7795
TLC11@mindspring.com
www.southportlandna.org



Ken Love Chair

SPBA Spring is in the air

It's time for some fun again so the South Portland Business Association will be holding a merchant fair called "Spring is in the Air." There will be food, drink, a silent auction and more. It is a great way for you to meet many of your neighborhood businesses and have a fun time too. Admission is free.

March 31st 5 to 9 pm

The Portland French School, 6318 SW Corbett Ave.

For more information, see the South Portland Businesses website www.southportlandna.com.

Nick comes to South Portland



Everyone was impressed with Commissioner Nick Fish's presentation at our last neighborhood association meeting. Neighbors were glad to hear Nick's determination to overcome the greenway issues and get it moving again. Nick also works hard on providing more affordable housing, veterans' issues and homelessness.

March SPNA

At our March neighborhood association meeting we will hear from representatives of TriMet about bus route changes in South Portland. We will also hear from a representative of the Portland Office of Transportation on the final Gibbs pedestrian design and construction time-table. Portland Parks will also be there to discuss possible metered parking in Willamette Park.

SPNA Elections

Board elections are coming up in April. We have positions available. If you are interested in helping out your neighborhood, please contact Ken Love (see contact information above).

SPNA outreach reading program



South Portland Neighborhood's web site is
www.southportlandna.org
Committee meetings

Next Board Mtg: Wednesday, March 4, 7 pm, Umpqua Bank, 3606 SW Bond. (Base of John Ross Tower). Please visit our website for neighborhood updates.

Transportation: Tuesday, March 3, 6 pm, Running Outfitters, 2337 SW 6th. Contact committee chair Bill Danneman at 503-228-9868 for more info.

Land Use Committee: Monday, March 16, 7:15 pm, at Ross Island Grocery, 3338 SW Corbett. Contact: committee chair Jim Davis, 503-248-9820.

Communications/Finance/Parks Committee: Wednesday, March 18, 7 pm, at Ross Island Grocery, 3338 SW Corbett. Contact: Lee Buhler, 503-227-0160, LEB@pacifer.

South Burlingame

Next Mtg: Thursday, April 9, 7 pm, Capitol Hill School, 8401 SW 17th
Contact: Interim Chair, Betsy Shand, betsy_shand@hotmail.com

Residents heard from Tim Hall, sr. community outreach coordinator for the Portland Water Bureau, on the future revision of the Fulton drinking water pump station. Maija Spencer, assistant project manager, Portland Parks and Recreation detailed one of the options to re-site the pump station in Willamette Park.

Hall also spoke briefly about the restoration project of the 3 Burlingame Tanks scheduled for this summer. We appreciate the time Tim and Maija spent discussing these projects and sharing photos.

Residents who want can join a volunteer task force on the pump station project through the Water Bureau. Did you know that even the governor of California follows the Portland

Water Bureau on Twitter? It is all about your drinking water. Have a voice now.

Work has begun at 12th and Spring Garden on the renovation of the vacant 6700-square foot-lot owned by the city. SB neighbors have championed the changes to this neglected site that will now become a neighborhood park.

Come to the site and give your input in the planning stage on Saturday, April 18th, (at the site) from 10 am to noon. Board members and neighborhood volunteers will be on hand to talk about the new addition to our neighborhood. This will become, over the next 12-24 months, a wonderful neighborhood park and possible community garden of native plants and flowers.

We hope to see you there. We hope to hear back from the Hardy Plant Society in April on our (second) grant application.

We have been contacted by a PSU student group that would like to present at our next meeting on their citizen tree project and how we can be involved in our neighborhood.

We will be taking a meeting break in March to get ready for the spring. Join us in April at our next regular meeting at Capitol Hill School on Thursday, April 9th. There has been some talk of changing the day we meet, so if you have any input, email us or post your input on the Ruby Terrace/South Burlingame discussion group site at sw-burlingame-portland@googlegroups.com.

West Portland Park

Next Mtg: Thursday, March 12, 7 pm, Markham School Cafeteria, 10531 SW Capitol Hwy
Chair Jim McLaughlin, 503-246-0601, jim.mclaughlin@gmail.com
http://swni.org/w_portland_park

Elections: WPPNA elections are in May 2009. All four officer positions are up for election and 4 of the seven director positions are up for election. Get involved. Run for an office. Contact Jim McLaughlin for more information.

Public Safety: There was a home burglary in the area just south of Jackson Middle School. There was a "lookout" on the street in a car with a cell phone. More might have been stolen, but the "lookout" let them know the homeowner was returning. They fled. The "lookout" is a woman in a silver Acura. She was also seen in the immediate vicinity a few days earlier driving slowly and parking to look around.

Keep an eye out for any suspicious activity in your neighborhood and let the Portland Police know. Call the PPB non-emergency number 503-823-3333. To report suspicious strangers unexplainably on your street, and note down license plate numbers and car make/model. If you see strangers going in or out of back or side yards with boxes or packages when you know your neighbor is not home, call 911. Talk with your neighbors. Let them know if you are gone during the day.

If they are home during the day ask them to keep an eye on your house. Let them know if there will be folks coming to your house with your approval. Build a local street email / phone tree to keep each other informed.

There was another armed robbery at the Dominoe's at 49th & Pomona.

Land Use: More news on the proposed development at the west end of Dickinson. The owners are requesting a waiver of the rule requiring them to make straight-line access to transit. TriMet stops on Barbur just downhill from the Dickinson site. Straight-line access would require stairs or a ramp to get to Barbur. Jim McLaughlin and Rob Shirley were appointed to write draft comments from the WPP Neighborhood Association to the Bureau of Development Services. The site also has severe stormwater runoff issues which could result in a slide down onto Barbur.

Parks: Dona and Brad Hipert have held six weed-pulling parties at Holly Farm Park since last October. Attendance has been spotty but lately there have been more pullers and all the weeds can get pulled in one day.

Neighbors have been weeding on their own schedules and others are welcome to do so as well. If you would like to be notified about future weed-pulling days, please email Betty McArdle, beamcaee@yahoo.com.

Twenty-minute neighborhood: Four graduate students from Portland State presented a proposal to work with WPP to study the concept of the 20-minute neighborhood. This concept described a neighborhood where you can get everything you want within 20-minutes' walking. The WPPNA board voted to participate in the study. The NA is not bound by or committed to any results or conclusions of the study, nor are the city or Metro. More information to follow in future SW News.

Dogs: Bill Dant found a source for dog poop bags dispensed on a post. There is a problem with people walking their dogs at Jackson Middle School and not picking up after them. Bill was asked to check in with the school before we do anything further.

Next Meeting: Join us for the next meeting, Thursday, March 12, 7 pm, at the Markham School cafeteria, 10531 SW Capitol Highway.

Help Create "Arts in the Heart of the Community"

a mural honoring our connection to art and one another

How you can help
The mural will be designed and painted by our community. You can...

1. Submit your photos, drawings, stories, or ideas by May 8, 2009.
2. Share your ideas directly with the artist. Aimee will have Friday drop-in hours - call 503.823.2787 for times.
3. This summer, help paint the mural with expert guidance.

Submission guidelines online or in person:
www.MultnomahArtsCenter.org
7688 SW Capitol Highway, Portland, OR 97219

This mural is made possible in part by the support of the Regional Arts & Culture Council (\$4437), The Safeway Foundation (\$5000), & Southwest Neighborhoods, Inc's Neighborhood Small Grants Program (\$2000).



MAC professional teaching artist Aimee Erickson has been commissioned to design this 122-foot community-driven mural.
Left: Aimee's 2008 mural created with Captain Strong Primary School Students & Staff, Battle Ground, WA

Neighborhood House Senior Center

Helping Neighbors Help Themselves
7688 SW Capitol Hwy., 503-244-5204
(9 am - 3:30 pm, M-F)

Programs & Services for Adults 55+

For more information or to reserve your place in the following programs/services, call 503-244-5204 or check the senior center newsletter.

- Blood Pressure Screening 10 - 11 am, Second Thursday
- Stability Ball & Yoga (\$3) 9:10 - 10:10 am Tuesdays and Thursdays
- Yoga (\$3) 10 - 11:30 am, Fridays
- Rhythmic Exercise (\$3) 10:15 - 11:15 am Tuesdays and Thursdays
- Foot Clinic Appointments available on 2nd Wednesday
- Low-Vision Support Group 11 am - noon third Tuesday
- Acupuncture (\$35-\$45) Appointments available Mondays
- AARP '55 ALIVE Driving safety program Date varies, call for info.
- Senior Law Project Appointments available 2nd and 4th Tuesdays

FREE TAX-AIDE

For taxpayers with low and middle income, with special attention to those age 60 or older. You must schedule appointments. AARP Tax-Aide volunteers provide free tax counseling and preparation service. This service can answer most of the tax issues faced by low- and middle-income taxpayers. Be prepared to have your taxes filed electronically, allowing returns to come more swiftly. Please note: the volunteers will have time to handle only simple returns and appointments are limited to 50 minutes.

Call the Neighborhood House Senior Center, 503-244-5204 x103 to make an appointment. Appointments available Mondays and Wednesdays through April 15th, 9 am to 4 pm. Actual appointments will take place at the Loaves and Fishes building at 7710 SW 31st Ave in the Jean Wade room on Floor 1B.

Please bring the following with you: you (and spouse) will need proof of identity (i.e., Social Security card); copies of all W-2, 1098, 1099 forms; SS numbers for all individuals to be listed on return; prior year's tax return; Childcare providers' information; taxpayers' banking information; estimated tax payments made; and amounts of other income.

Both spouses should be present or return will be delayed.

Exciting New Trips

Transportation can open the doors to so many opportunities to enjoy what Portland has to offer. That's why we invite you to join our new Rider's Club. Choose new places to explore with friends. You can choose to go to go out to lunch, explore downtown, visit a museum, and much, much more. Let a Ride Ambassador be your guide. Or, become a Ride Ambassador yourself and help others learn new ways to get around town.

Contact Ann Williams, 503-244-5204 x103 for more details.

MARCH TRIPS

Senior membership required
Call (503) 244-5204 x103 for info.

- Reminder: Payment is required prior to registration for trips with a cost.
- LUCKY EAGLE CASINO TRIP: Tuesday, March 3rd, 8:45 am - 5 pm. Cost: Free. Registration begins February 20th.
- S.C.R.A.P.S. & RED ROBIN LUNCH: Wednesday, March 4th, 10:45 am - 2:30 pm. Cost: \$3. Registration begins February 25th. Visit the School and Community Reuse Action Project Center. Find low cost supplies for projects and new projects.
- CEDAR HILLS SHOPPING TOUR: Tuesday, March 10th, 10:30 am - 2:30 pm. Cost: \$2. Registration begins February 25th. Stop at multiple stores then meet up for lunch.
- ALBERTINA'S RESTAURANT: Tuesday, March 18th, 11 am - 2:30 pm. Cost: \$3, plus lunch and shopping. Registration begins February 25th.
- PITTOCK MANSION: Wednesday, March 24th, 11 am - 3 pm. Cost: \$2, plus lunch and shopping. Registration begins February 25th. Tour the Pittock Mansion. Lunch at Big Red's.

SW Community Health Center has a New Home

There was a strange caravan rolling down Capitol Hwy on January 30, 2009. With hand carts and dollies, volunteers moved SW Community Health Center into its new home at 7754 SW Capitol Hwy, a block from its former site in Room 37 of the Multnomah Center.

SWCHC is now located in a 2000-sq.-ft. space on the corner of SW Capitol and 34th. A large banner proclaiming "new home of SW Community Health Center - expanding health access to the uninsured" articulates the goal of our move. Our new space provides SWCHC with the capacity to increase from 2 exam rooms to 6 and significantly expand health care access to the uninsured over the coming months.

Similar to a move into a new home, we're acclimating to our new environment - taking care of additional details (i.e., hanging shelves, furnishing more exam rooms) and planning for additional services. One of our first goals is to add designated chronic disease management evening clinics that address diabetes, hypertension and asthma - the most common chronic conditions seen at SWCHC.

We are also pleased to announce the progress of SW Walks, our monthly one, three and five mile walks, co-sponsored by the SWCHC Ecumenical Support Group and intended to promote both exercise and community-building. SWCHC recently received a SWNI small grant through the Office of Neighborhood Involvement Program that will provide outreach to under-represented minority populations inviting participation in the monthly exercise and community-building walks.

SWCHC's Ecumenical Support Group is also planning a fundraising Walkathon, scheduled for April 19, 2009, in support of the clinic. It's a fun-filled healthy experience. Learn more about it on our website and next month's SWNI article, or call Samira Godil, SWCHC Executive Director, at 503-977-0733 for additional information.

We are most grateful to the community for its support of SWCHC with special thanks to Neighborhood House, the Multnomah Center and Mark Childs and Jeff Mason of the Integrated Building who have welcomed us into our new space. SWCHC continues to provide care by appointments which can be made by calling 503-977-0733. Services are provided on a sliding fee scale. We look forward to expanding health care access to low-income uninsured members of our community.

Estate Planning Made Easy

Tuesday, March 3, 6:30 - 8 pm
Fulton Park Community Center
68 SW Miles Street

Acquire up to date knowledge about wills, living trusts, health care documents, issues regarding guardianship, conservatorship plus power of attorney. Essential information for anyone!

To register for course #282894, visit <http://www.portlandparks.org/register/Activities/ActivitiesDetails.asp?ProcessWait=N&aid=4362&From=fas>.

Welcome shoppers!



Volunteers prepare donated items for rummage sale

The Neighborhood House Senior Center Rummage sale is on Thursday, March 26th and Friday, March 27th, 9 am to 5 pm Saturday, March 28th, 9 am to 3 pm

We are still collecting items for this annual event. It's time once again to start going through closets and garages to find old and exciting things for the annual rummage sale. This is by far our biggest fundraiser of the year and its success is entirely dependant on your donations! What a great time of year to clean out the house and toss out things you are no longer using. Please consider donating any of the following items during Senior Center hours: household items; small appliances; dishes; cookware; decorative items; small furniture; clothing and shoes; jewelry; sporting goods; garden tools; toys; tools, automotive equipment; craft supplies; and holiday decorations.

If you have a large donation or more information, please call the center at 503-244-5204. If you would like to volunteer to help out at the rummage sale, please contact Ann Williams, 503-244-5204 x103 for more details on how you can join in the fun.

Sorry, we cannot accept stoves, tires, refrigerators, televisions, computer equipment, large furniture, medical equipment, mattresses or sofa beds.

Need Energy?...Help's on the Way!



Angela DeParini

Angela DeParini knows the look well—the fear and frustration on the faces of those who've been told they are about to have their heat or lights turned off. Since this "energy season" began last fall, she has seen hundreds of people across Multnomah County in that situation. And she's been able to help many of them quickly, sometimes with just a few key strokes.

Neighborhood House is currently one of the leading providers of energy assistance in Multnomah County, one of two offering "non-regional" assistance. Non-regional providers can have an "open door," serving anyone who walks in and qualifies based on income for the assistance. DeParini, Neighborhood House's Community Services Program Manager for the last 12 years, does more than keep her door open; she's taken her energy assistance show on the road, reaching out to low-income people at community and senior centers, schools and public housing sites on both sides of the Willamette.

She holds outreach events in the evenings to reach working families, and even does home visits for elders and others who have trouble getting out. Equipped with just a laptop, wireless card and portable printer, she's able to access the state's online energy assistance database, allowing her fully to screen and process applicants on the fly. Says DeParini, "I just want to make sure the help gets to where it's needed."

Energy assistance programs aim to help low-income individ-

uals and families pay their utility bills and avoid disconnection during the winter months, when heating costs spike.

Funds for Neighborhood House's energy assistance program come through Multnomah County from several different sources, including the Federal Low Income Energy Assistance Program (LIEAP) and the Oregon Energy Assistance Program (OEAP). Additional funds come from Oregon Heat, a non-profit organization supported by area utility companies to help people facing home-utility crisis.

Neighborhood House is responsible for distributing a total of \$277,000 to qualified applicants. State regulations require that to be eligible a household must be at or below 60% of Oregon's median income for a household of that size. The cut-off for a family of three is \$32,675.

DeParini launched this season's services in mid-October with an outreach effort to the primary high-need groups for energy assistance programs: seniors, people with disabilities and families with young children. Finding people in need of the program has not been difficult, however. Neighborhood House's phone lines have been inundated with calls, and DeParini's walk-in community events have drawn as many as 75 households.

Not only are the numbers unusually high this year, but the kind of people seeking assistance is different, too. DeParini is noticing more people who've never had to ask for help before—laid-off construction workers, realtors and salespeople. She says, "Many middle class people who had real jobs don't have the resources to last through months and months of unemployment. We want them to hang on until things start turning around."

For more information about Neighborhood House's energy and other emergency assistance programs, call 503-246-1663, or go to www.nhweb.org.

Watershed Stewards Connection

Jennifer Seamans Blatner, Watershed Center, watershed@spiritone.com or 503-823-2862

Do you get a headache from watching invasive species take over your backyard or neighborhood park? Is your favorite trail afflicted by erosion? Have you wanted to learn more about watershed restoration, but didn't know where to start?

Check out the updated WRC website at <http://wrc.swni.org>. Several new features benefit groups and individuals alike.

If you've considered starting a new volunteer group (whether stewardship or neighborhood oriented), an in-depth how-to guide will help you cover the fundamentals. An event checklist helps volunteers put on successful stewardship events. Other pages connect homeowners with technical referrals and funding resources. Please contact the Watershed Resource Center at 503-823-2862 if you prefer to receive a paper copy of this information.

Friends of April Hill Park
Contact Jill Gaddis, aprillhillpark@maplewoodna.com or 503-977-2835.

Bridlemile Creek Stewards
Meeting 2nd Tues (March 10), 7 pm, Watershed Resource Center (inside SWCC, 45th & Vermont). Hamilton Park work party Sat. March 14, 9 am to noon, Meet at the tennis courts area. Contact Greg Schifsky, gregl@q.com, 503-246-2714, or <http://bcs.swni.org>.

Dickinson Park Stewards
No events currently. Contact Tony Hansen, tony@projectconniption.com or 503-317-3914.

Multnomah Village Park
Check website: <http://multnomahvillagepark.googlepages.com>. Contact Randy Bonella, rmbonella@comcast.net or 503-293-9460.

PCC Habitat Team
Event hotline 503-244-6111 x3608 or email April Fong, afong@pcc.edu.

South Portland Riverbank
Work party 3rd Sat (March 21), 9-noon, meet at covered picnic area in southern end of Willamette Park (Nebraska & Macadam). Contact Marissa Dorais, marissa.dorais@bes.ci.portland.or.us or 503-823-7016.

Stephens Creek Stewards
Texas Green Street tour Sat March 7, 10 am, RSVP for location. To join the email list, contact Jen at the WRC, watershed@spiritone.com or 503-823-2862.

Friends of Tryon Creek SP
Work parties 2nd & 4th Sat (March 14 & 28), 9-noon, TCSP Nature Center. Contact: Amy Hoffman, amy@tryonfriends.org, 503-636-4398

or tryonfriends.org.
Tryon Creek Watershed Council
Meeting 2nd Mon (March 9), Tryon Creek SP. Headwaters work party Sat. March 7, 9 am - 1 pm, preregistration is required. Work party 3rd Sat (March 21), Nettle Creek site. Contact Carl Axelsen, tcwc@tryonfriends.org, 503-636-4398 or <http://tcwc.tryonfriends.org>.

Friends of Vermont Creek
Work party 4th Sat (March 28), 9-noon, meet at Gabriel Park Tennis Courts. Meeting 4th Mon (March 23), 6-7:30 pm, Lucky Lab, 7675 SW Capitol Hwy. Contact Jen at the WRC, watershed@spiritone.com or 503-823-2862.

Friends of Woods Park
Work party 4th Sat (March 28), 9-noon, Marigold St. trailhead off Capitol Hwy. Contact Kevin Duff, kevin.duff@ci.portland.or.us or 503-998-9417.

West Willamette Restoration Project Work Parties
Contact Amanda Wilson, volunteer@trlc.org or 503-699-6825.

George Himes Park
3rd Sat (March 21), 9-noon, SW Terwilliger & Nebraska St.

Keller Woodlands
1st Sat. (March 7), 9-noon, Terwilliger Blvd turnout 0.6 mi north of Chart House Restaurant.

Marquam Nature Park
Last Sat (March 28), 9-noon, Council Crest Park, near dog park on north side of loop.

Friends of Terwilliger
2nd Sat (March 14), 9-noon, SW Terwilliger & Hamilton St.

JOIN US!

As winter winds down and spring eases in, consider becoming active with the Tryon Creek Watershed Council. The council and its partners maintain a list of ongoing restoration projects. We hold quarterly public workshops with the Friends of Tryon Creek State Park on natural landscaping. We respond to inquiries about storm water management, invasive weed removal, and how to encourage more songbirds and wildlife into backyards. We attend various community events to inform residents on watershed issues.

The council maintains three committees each of which is made up of local residents as well as representatives of natural resources agencies. Consider joining the council itself or the stewardship committee, the education & outreach committee, or the assessment committee. Or simply volunteer to help with a project or event.

Those volunteering on the stewardship team are on the lookout for sites to be restored to natural health by removing non-native invasive plants and landscaping with natives. Some of these sites are public greenspaces. Some are private sites with challenges beyond the capacity of the owners. Volunteer mentors help homeowners plan and carry out backyard habitat res-

toration. Whether public or private, the restoration of each site improves the overall health of our watershed.

The education & outreach team looks for ways to teach residents how to protect the watershed. They conceptualize workshops and media pieces that encourage effective management of stormwater and the restorative value of landscaping with low-maintenance natives. They develop ways to publicize watershed progress and alert residents to threats.

The assessment team establishes the measures that will tell us where our biggest threats and opportunities lie and whether we are making progress. They work with various local agencies to ensure that measurements are made and that analysis occurs to inform the council and our partners about water quality, air quality, biological diversity, wildlife health and other measures of overall natural health.

Check out the council website at tcwc.tryonfriends.org. Stop by a council meeting (6 to 8 pm) each 2nd Monday at the State Park Nature Center. If you see an event that interests you, contact the coordinator at 503-636-4398 or tcwc@tryonfriends.org.



The new curb extension and vegetated swale in front of Key Bank. The swale will pick up water from both SW Troy and 35th. Later this spring, similar facilities are planned for construction in front of Starbucks and in SW 32nd next to Lucky Lab.

March 2009

Sunday 1	Monday 2	Tuesday 3	Wednesday 4	Thursday 5	Friday 6	Saturday 7
1:00p Naturescaping Workshop	6:00p Multnomah Co. Budget Hearing 7:00p Multi Historical	6:00p SPNA Trans Comm 6:30p Clean Water Rewards Workshop 7:00p Homestead NA	7:00p Hillsdale NA 7:00p S Portland NA Board 7:00p Collins View	7:00p SWNI Parks Committee 7:00p SWNI Crime Prev. Comm		9:00a Keller Woods WorkParty 9:00a Tryon Creek Headwaters Wk Pty
2:00a DAYLIGHT SAVINGS TIME BEGINS	5:30p ONI BAC 7:00p Tryon Creek WC 7:00p Ashcreek NA 7:00p Maplewood NA	7:00p Arnold Creek NA 7:00p Bridlemile Creek Stewards 7:00p Multnomah NA 7:00p Hayhurst NA	6:30p Bridlemile NA & Bridlemile School Birthday 7:00p Crestwood NA 7:00p CV Triage Class	6:00p Marshall Park NA 7:00p W Portland Park NA	13	9:00a Fr of Terwilliger Work Party 9:00a Trail Walk 9:00a Tryon Creek Wk Pty 9:00a Hamilton Pk Wk Pty
15	6:00p Multnomah Co. Budget Hearing 7:15p S Portland Land Use	7:00p <i>St. Patrick's Day</i> 7:00p SWNI Land Use 7:00p Far SW NA 7:00p Sustainable Hillsdale Presentation	8:30a Hillsdale B & P 11:00a SWNI Exe Com 7:00p S Portland Comm 7:00p SWNI Trans Comm 7:00p SWHRL	7:00p SWNI Schools	20 <i>Spring Begins</i>	9:00a Himes Park Wk Pty 9:00a S Pld Riverbank Wk Pty 9:00a Nettle Creek Wk Pty
22	6:00p Friends of Vermont Creek	7:00p SWNI Communications 7:00p SWNI Transportation Comm	7:00p SWNI Board Meeting	8:30a Mul Village Business 9:00a Sr Ctr Rummage Sale 7:00p SWNI Trails	9:00a Sr Ctr Rummage Sale	9:00a Fr of Vermont Wk Pty 9:00a Tryon Creek Wk Pty 9:00a Woods Park Wk Pty 9:00a Marquam Nature Pk Wk Pty 9:00a Sr Ctr Rummage Sale
29	30	31 5:00p S Pld Bus Assoc Merchant Fair				

Weather contingency: All meetings canceled if Portland Public Schools are closed. The SWNI office will be open if possible. The staff will attempt to open within two hours of regular time (8:30 am). We recognize that storms cause problems for people with whom we work and our goal is to respond as effectively as possible within the guidelines of common sense. If you are in a crisis situation and unable to reach us, as a backup number you can call the Office of Neighborhood Involvement (ONI) at 503-823-4519.

People with disabilities who need special assistance to participate at a neighborhood meeting should call Southwest Neighborhoods, Inc. at 503-823-4592. Citizens needing a sign language interpreter should call at least 48 hours prior to the need.

Stormwater Rewards Workshop

Tuesday, March 3rd, 6:30 pm
Multnomah Center
7688 SW Capitol Hwy

When you contain stormwater on your property, you can protect rivers and streams and you can receive a discount on your stormwater bill. Join us and learn more.

For more information, visit www.cleanriverrewards.com.

Free Basic Naturescaping Workshop

Sunday, March 1, 1 - 5 pm
Berry Botanic Gardens
11505 SW Summerville Ave

Pre-registration required. See <http://www.emswcd.org/naturescaping> for more information, other workshops and to register.

Join the Urban Trails Walk

Saturday, March 14, 9 am

Pete Schmierbach will lead us on our annual Trillium hike through Maricara park. Trillium blooms are hard to time so keep your fingers crossed. In any case, we will have a good time as we always seem to do.

Meet at the entrance of Wilson High near the intersection of Sunset and Capitol by 9 am. The hike should be around 5 miles with about 400-ft elevation gain. As usual dress for the weather.

For more information, call Phyllis Towne at 503-223-3723.