

Southwest Neighborhoods awards 18 neighborhood grants

Southwest Neighborhoods, Inc., is pleased to announce that its Neighborhood Small Grants Selection Committee has awarded 18 small grants to neighborhood and community organizations. The committee was encouraged by the enthusiastic response generated by the community for funding interesting projects. SWNI received 21 requests for \$36,566.35, which far exceeded the \$25,140 we had to distribute. This is the first year for the Office of Neighborhood Involvement's Neighborhood Small Grants program and we hope that it will be funded again next year.

The committee was chaired by SWNI 2nd Vice President Ester McGinnis and included the following members: Loaves and Fishes Executive Director Joan Smith, Rob H. Flecker, D.V.M.; Tryon Creek Watershed Council Chair Terri Preeg Riggsby; and Heath Research Publication Manager Marti Succ. The recipients and proposals are listed below:

The Fulton Front Stoop Project - Fulton Community Association: (\$1,978.80) This project will produce an emergency preparedness fair to be held at the Fulton Park Community center. The purpose is to strengthen neighbor relations and provide education among neighbors about emergency preparedness.

Capitol Hill Elementary Stormwater Retrofit - Capitol Hill PTA: (\$900) Host a series of educational workshops about our local watershed, stormwater, and various technologies and approaches to on-site infiltration. One goal is to create a plan to improve the school's stormwater management to benefit the community by providing environmentally friendly places for children to play, learn and grow.

Ashcreek Neighborhood Outreach, Survey and Community Event - Ashcreek Neighborhood: (\$1,500) Reach out to every household and invite neighbors to participate in activities and provide them with the opportunity to identify neighborhood issues important to our community, using a survey.

Maplewood Summer Picnic & Outreach Project - Maplewood Neighborhood Association: (\$1,500) Host our 2nd Annual Maplewood Summer Picnic which develops a sense of place and builds community. Use door to door distributions of flyers, ads, website and e-list to expand the capacity of the neighborhood system. Purchase signs to market the neighborhood association and announce meetings.

Maplewood Playground Replacement Project - Maplewood Elementary School: (\$2,000) Replacement of aging and unsafe playground equipment which will provide exercise and healthy play. This area serves as the hub of a community for many young families and as a gathering spot for neighbors to meet.

South Portland Newsletter (Promoting Neighborhood Involvement and Identity) - South Portland Neighborhood Association: (\$1,976.20) Increase community involvement by mailing a neighborhood newsletter to every resident, distribute the History of South Portland on either CD or DVD, present our new logo, and identify volunteer opportunities. Introduce neighbors to their neighborhood association, schools and businesses plus invite them to our annual picnic.

South Burlingame Neighborhood Association Outreach - South Burlingame Neighborhood Association: (\$2,000) Increase community involvement on the neighborhood board, strengthen community interaction and community enhancement. Provide a greater dialog regarding livability issues and improving neighborhood greenspaces and self-identity of neighborhood.

Markham Neighborhood Signs - Markham Neighborhood Association: (\$400) Purchase signs to notify neighbors of meetings and special events. Use banners at our NNO event and other activities, including restoration work parties. Work with the Water Bureau to contact neighbors regarding formation of a hydropark.

Marshall Park Place - Based Organizing Project - Marshall Park Neighborhood Association: (\$2,000) Complete a needs assessment for better advocacy on behalf of neighbors and to understand neighbors' needs and values regarding Marshall Park. Elements of the project include: create an interactive website, distribute an all-household postcard, follow-up with door-to-door outreach, neighborhood potlucks, NNO event and nature walks.

Connecting Nearby Neighbors for the Environment - Nearby Neighbors for the Environment: (\$1,000) Assist environmentally concerned neighbors in locating each other, provide support to build and maintain a network of local neighborhood groups concerned about environmental issues. Provide a contact point between residents, NAs, and other community-based organizations using a web page listing of local neighborhood groups and advertisements in local papers.

Multnomah Village Gateway Park - Multnomah Neighborhood Association: (\$1,500) Clean up property off Multnomah Blvd/Capitol Hwy and Garden Home Rd and establish a permanent public space to provide an opportunity for neighboring residents to participate in neighborhood projects enriching the business community and neighborhood.

Neighborhood Grants continued on page 2



Tommy Griffin, Sheryl Griffin, MeiMei (the dog), Hannah Russell, Brian Russell, Mia Russell, Laura Russell, Randy Bonella, Kaye Synoground, Frank Synoground, Aaron Rivera, (Max and Cloe, the twins Rivera) in the stroller



Photo courtesy of Brian Russel, Multnomah NA Chair

Sweets, etc., owner Tricia Leahy giddily anticipates the Multnomah Outdoor Cinema's screening of the original Willy Wonka and the Chocolate Factory on February 11 in the Multnomah Center

Multnomah Outdoor Cinema heads inside

Back by popular demand, the Multnomah Outdoor Cinema will be screening

Willy Wonka and the Chocolate Factory

Sunday, February 11, at 2 pm (doors at 1:30 pm)

in the Multnomah Center Auditorium, 7688 SW Capitol Hwy

The film is being presented by Sweets, etc., our local confectionery. Owner Tricia Leahy expressed boundless enthusiasm for the movie, noting that the event "will be a ton of fun and a great way to give back to the community." Additionally, collection bins will be on-site for your non-perishable food items to help restock Neighborhood House's food pantry. Plans are in the works for another outdoor summer run this year. For summer sponsorship or advertising information, please contact Jessica Wade at 503-246-1684.

Let your voice be heard on what programs are important to you at the

Citywide Budget Workshop

Tuesday, February 6, 5:30 pm, St. John's Community Center, 8427 N Center St

Citywide Community Budget Forum

February, 22, 6 pm, Cleveland High School, 3400 SE 26th

see back page for more information

Southwest Neighborhoods, Inc.
7688 SW Capitol Hwy
Portland, OR 97219

NONPROFIT ORG.
U.S. POSTAGE PAID
PORTLAND, OR
PERMIT NO. 1348

Neighborhood Grants

continued from page 1

Homestead Neighborhood Association Outreach Activities to Re-invigorate a Neighborhood - Homestead Neighborhood Association: (\$765) To provide outreach to Homestead neighbors and build a sense of community and increased safety, security and well being by increasing participation in neighborhood association activities, i.e., Neighborhood Watch, emergency preparedness, etc. We will purchase meeting signs and banners, design a website and provide outreach to neighbors.

Arnold Creek NA Outreach Project - Arnold Creek Neighborhood Association: (\$600) Building the NA through outreach to the community with lawn signs to inform neighbors when and where meetings are held. Purchase a banner to use during community functions and at school activities. Prepare a meet-and-greet package for new neighbors with information on neighborhoods, emergency preparedness, schools, local businesses, etc.

Southwest Portland Public Safety Educational Outreach Project - SWNI Crime Prevention & Public Safety Committee: (\$850) Educate the community on two important crime issues while allowing them the opportunity to connect with police that serve their community. Help to reduce identity theft/fraud crimes, burglaries and break-ins by using Crime Prevention Through Environmental Design techniques.

Somali Community Neighborhood Participation - Somali Community Services: (\$2,000) Help the Somali community become engaged in the neighborhood system and as a result fully participate with the city's visioning process.

Dickinson Park at the Movies - Dickinson Park Stewards: (\$1,170) Hold outdoor movies in Dickinson Park as a community building project and to show residents the need for playground equipment in this beautiful park. Recruit volunteers to help with the park and build connections to the neighborhood association through this outreach effort.

Wilson-Rieki Campus Plan - Wilson High School PTA: (\$2,000) A collective vision for the Wilson-Rieki campus enhancements and modifications to the large campus which will develop relationships between multitudes of interest groups and involving more citizens in the neighborhood system.

Development of Hillsdale Web Sites - Hillsdale Alliance: (\$1,000) Produce a website that helps enhance the definition and affinity of the Hillsdale community.

New play equipment for Stephenson Elementary



In just two weeks the Stephenson Children's Care Association raised approximately \$60,000 dollars to replace play equipment, deemed unsafe by the Portland Public Schools (PPS). Stephenson Children's Care Association a nonprofit parent organization learned the wooden play equipment pieces were going to be removed by PPS. They decided to hold a two week fundraiser. According to director Mark "Trol" Trolan, the Children's Care Association donated \$34,000; the Arnold Creek Neighborhood Association (ACNA) \$5,174 (money originally raised by former ACNA chair Patty Barker with the intended purpose of building a small neighborhood park for preschool children on Stephenson's grounds); and 89 individual families contributed \$21,000 (one anonymous family generously matched what other families contributed). Portland Public Schools contributed the new bark chips. It is truly amazing what community members can achieve when they work together.

Comment on draft sponsorship policy

Portland Parks & Recreation has developed a draft sponsorship policy. The draft is posted to the PP&R web site for review. Community comment is invited. <http://www.portlandonline.com/parks/index.cfm?c=43957>. The policy will be presented and discussed publicly at the February meeting of the Citywide Parks Team:

Citywide Parks Team Meeting
Thursday, February 15, 2007, 7-9 pm
Portland City Hall - Rose Room (third floor)
1220 SW Fourth Avenue

A form for comment is posted on the website.

Public comment will be taken through February 23, 2007. After review of public comments, the policy will be finalized and then referred to city council for adoption.

Portland Parks and Recreation (PP&R) is a bureau of the City of Portland whose services are primarily funded from the city's general fund. In recent years, demands upon such funds have increased, a trend that is expected to continue.

To maintain and enhance the city's park and recreation system, Portland Parks and Recreation is actively seeking to establish alternate revenue streams that will increase its ability to deliver services to the community and/or provide enhanced levels of service beyond the core levels funded from the city's general fund. One of the alternate funding sources being pursued is sponsorship.



Amazing new community

by Glenn Bridger, Southwest Neighborhoods Chair

As most of us drive or ride the bus into downtown, we see the new South Waterfront community rise on the banks of the river. In just a year, it has made striking progress. The tram, flying overhead on its cables, really catches the eye and underscores the progress of this venture.

The new office and residential towers are now getting filled. Some OHSU medical offices now provide services from this location, and more lights in other buildings show that the construction crew has been replaced by people living their lives in this new high-rise city. The streetcar extension now reaches into this neighborhood, making it more convenient to go to and from downtown and Northwest Portland and then to nearby Lair Hill. Such are the vagaries of our city transportation spending.

The tram is an icon of success for this development, in much the same way as developers of yesteryear would build a streetcar line into town to let the city know their community had arrived. As those bubble cars travel overhead, how could anyone not be excited that this is now a part of our city? The view from SW Barbur or Naito Parkway or I-5 is exciting.

Now, time for reality:

First, the tram is a seamless part of our transportation system, and the TriMet fares will let you ride. Such were the assertions of the tram planners throughout the public process. Yes, we had an intrusion into our community, but we also had a new integral part of our transportation system.

The promise has not been kept. A \$4 fare, separate from TriMet, has been proposed by the city and objected to by the local residents and neighborhood associations. Why would the city even recommend going back on their word regarding the fare? While the city may have changed its position on this fare by the time you read this, let's speculate for a moment a few of the reasons they may have thought about when proposing this higher fare structure:

- Like the county jail, there was money to build but not to operate the tram
- OHSU wants to carry medical freight (think about that for a minute) on the tram that would not be allowed were it a part of the Tri-Met system +

Second, the South Waterfront developers, PDC, OHSU, and the city have their eyes on federal funds to pay for needed transportation improvements to the district, now that they have spent their money on the tram. Throughout the discussions in the Portland Aerial Tram citizen advisory meetings, the issue of very poor access to the South Waterfront was raised by the citizens. Just as quickly, each time it was raised it was dismissed by the city as something South Waterfront would just have to live with.

But watch the transportation funding requests by the city the next several years, and you will see projects in South Waterfront on the list. And, projects in our neighborhoods like SW Barbur and Capitol Highway not being funded. And there are a host of other important arterials in this city that warrant attention, like SE 82nd. But the money that was spent on the tram by the Local Improvement District, the PDC and the city are gone, spent on the tram.

Third, Portland's history of streetcars and the building of streets and sidewalks should come into play. The wonderful streetcar system of the past was constructed by private investors. When we ask the city about sidewalks for our children to walk to school, the city tells us time and again that since the developers in our area did not put them in, we as property owners must now pay for the costs of sidewalks. While that has not always been the case, that continues to be the public answer to us.

So why is the city involved in the tram at all? Why would the city support any street and access improvements to South Waterfront in the future?

In my personal opinion, the answers all go back to the relative respect given to the money people versus the neighborhoods. In the traditional Portland paradigm that built the earlier streetcars (and is touted as how the sidewalks all got built), the tram and its access would all be paid for by the developers who own the property. Neighborhoods are told to have their residents pay for their sidewalks; the city, PDC and federal funds will pay for the majority of access by street and tram to the new community.

Neighborhoods do not yet have equal footing in our public process.

What would equal footing look like in this case?

- Tram fares integrated into the TriMet schedule
- Developers required to build the infrastructure
- During the life of an urban renewal district, requests for external funding (city, state, federal) for infrastructure projects would be postponed until non-urban renewal area needs have been met in the city (see above).

The publicly-funded tram is being run as a private shuttle. In the "olden days", a privately funded streetcar would have become a part of our city transportation network.

Crisis Response Team volunteers needed

Trauma Intervention Program of Portland/Vancouver (TIP), an organization of specially trained citizen volunteers helping citizens in crisis, is seeking volunteers who will be trained to assist police, fire and emergency medical crews at the scene of traumatic incidents and sudden loss.

TIP is looking for caring people to be part of a team of volunteers trained to provide emotional and practical support to the victims of traumatic events. TIP volunteers work with Portland Fire Rescue and other local emergency response agencies and can be called to assist in any traumatic situation including but not limited to: offer comfort and support after the death or sudden illness of a loved one; provide emotional and practical support to those who have been robbed, burglarized or assaulted, help disoriented older persons; support survivors of a suicide; help emotionally traumatized victims of accidents; and help those emotionally shaken by any crisis event.

No experience is necessary. Volunteers will be trained to provide immediate emotional and practical support to victims and their families in crisis situations. Training starts Feb. 1. For more information or to register, visit our website at www.tipnational.org or contact June Vining, 503-823-3937, jvining@fire.ci.portland.or.us. Registration fee is \$50.

The Southwest Neighborhood News is distributed free, published monthly, by Southwest Neighborhoods, Inc. All submissions are due by the 15th of each month.

Southwest Neighborhoods, Inc., (SWNI) is a nonprofit coalition that provides services to promote citizen participation and crime prevention in 16 Southwest Portland neighborhood associations and three business associations.

Our mission statement reads: "SWNI empowers citizen action to improve and maintain the livability of Southwest neighborhoods." Partial funding is from the City of Portland through an annual contract.

Our office is located in the Multnomah Center, 7688 SW Capitol Hwy. We are open 8:30 am to 5 pm, Monday through Friday. To reach us call 503-823-4592, email swni123@spiritone.com.

SWNI staff: Sylvia Bogert, Executive Director; Leonard Gard, Land Use Specialist; Ginny Stromer, Administrative Assistant, Jennifer Blatner WRC Coordinator.

The 2004-2005 SW Neighborhoods, Inc., Board Officers are Glenn Bridger, President; Wes McMullen, 1st Vice-President; Ester McGinnis, 2nd Vice President; John Gould, Secretary; and Patty Lee, Treasurer.

Your community

Protect stream quality while beautifying your yard through Naturescaping

The Basic Naturescaping workshop is a FREE 4-hour workshop to learn how to naturescape your yard. Naturescaping features beautiful native plants (resistant to native pests and diseases), natural landscapes and environmentally-friendly gardening practices. The result is less water use, fewer (if any) chemicals and less maintenance - direct benefits to you, your garden and the environment. Plus it attracts interesting and beneficial wildlife.

The workshop includes before and after Naturescaping examples, advice on landscape design and native gardening, identifying native plants, and a short outdoor field trip to a nearby home or community project to see naturescaping in action. Get ideas for your garden, a guide book and a native plant to get you started. Open to all. Preregistration required. Either email naturescaping@yahoo.com or phone 503-797-1842.

Saturday, February 17 - Basic

9 am-1 pm in NE Portland

Saturday, February 24 - Basic

9 am-1 pm at the Home & Garden Show at the Expo Center.

Completion of the workshop includes free admission to the show.

Saturday, March 10 - Basic

9 am-1 pm in Beaverton

Sunday, April 29 - Basic

1-5 pm at Tryon Creek State Park in SW Portland.

Saturday, May 19 - Basic

9 am-1 pm at the Sunnybrook Service Center, Clackamas

Watershed Resource Center update

Jen Seamans Blatner

Looking for something to do while the weather's still crummy? Remember that the WRC offers free watershed education programs, ranging from storytelling to water chemistry, for pre-K through 12th grade. If your preschool, neighbors, scout group, or other community group is interested, view the program's brochure at www.spiritone.com/~watershed/programs.pdf.

Need community service credit? Check out the calendar on the back page of the SWNI news, or find out about work parties in your area (every weekend of the month!) by contacting the WRC at 503-823-2862 or watershed@spiritone.com.

Spotlight on SW Stream Stewards: PCC Habitat Team

The PCC-Sylvania Habitat Team is a group of students working on restoration projects in the Far Southwest Neighborhood, led by biology instructor April Ann Fong. The group, representing a variety of vocational interests, has made some amazing progress in the ten years of its existence. Work began initially with PCC-Sylvania Campus areas, but the group soon realized the importance of serving the community with projects in Sylvania Natural Area Park (SNAP) and Lesser Park. These parks impact Red Rock and Ball Creek watersheds, flowing west off the slopes of Mt. Sylvania. Volunteers have removed invasive species, planted natives, controlled erosion in riparian areas and removed several truckloads of debris and waste at these sites.

The Habitat Team doesn't stop there, though. Students learn important monitoring techniques to document the changes that restoration brings to plant diversity, water quality and wildlife. The group is also currently applying for a grant with the intentions of working with the Neighborhood House's SUN programs at Markham Elementary and Jackson Middle School to engage kids in native re-planting and environmental education.

Work parties are held several times per term. In fall 2006, PCC staff and students volunteered a whopping 641.25 hours to plan and implement restoration at SNAP! Neighbors are welcome and encouraged to join the work parties; for more information on upcoming events, contact the Habitat Restoration Team hotline at 503-244-6111, extension 3608, or email afong@pcc.edu.

SW Trails in the sky

On our January walk we took time out from hiking to ride the tram up and down. We got a chilly start to the hike in Willamette Park where the temperature was down in the 20s. But everyone dressed for the cold and once we got going, we warmed up. We had a pleasant, easy walk up the greenway trail. We stopped to see the Heron Point wetlands restoration project, the marker for Portland's first log cabin and the new greenway trail next to the South Waterfront high rise buildings. Then, OHSU and our OHSU escort Harry Lenhart generously took us for a tram ride up the hill. Since it was cold and clear the view was spectacular.



Please join us for our next hike on Saturday, February 10th. Meet at the oak tree at the intersection of Capitol Hwy and Sunset in Hillsdale at 9 am.

The 4T trail: At our meeting on February 22nd we will be discussing an exciting proposal to create a loop trail to explore urban trails via transit components. The 4 Ts are: trails, tram, trolley (or streetcar), train (or MAX). T4 users would be asked to purchase an all day TriMet pass (currently \$4.25). First, they would take the trolley to the tram station in South Portland and then board the tram. At the top, signs will direct folks to the street, and then up the hill on Urban Trail #1. Walkers would go along Gibbs and then on Marquam Hill Rd to Fairmount and then to the top of Council Crest to see the view. Then walkers would be directed down the trail to Talbot and Fairmount, then follow Talbot to Patton, north 50 yards on Patton where they follow the trail (Urban Trail 7 and 40-mile loop) to the zoo station of MAX. Then, walkers would take the Max to the point of beginning. This trail could be added at little expense since the directional signs are all that is needed at this point. However, to make it a "tourist-acceptable" route, sidewalks would have to be added on some streets. This would be a great way to show off the hidden gems of our city.



Bicycle Boulevard Project: We have been getting a lot of great feedback on our project to identify good bicycle boulevards in Southwest. We have started to form a bicycle route map. However, there are several neighborhoods that we have not heard from. If you have ideas for good bicycle routes, please contact us. Bicycle boulevards are low-volume, low-speed streets that make good bicycle routes.

Please come to our next meeting, Feb. 22, (see *SWTrails* page 4) where you can get updates on all our other on-going projects such as trail work and sidewalk safety. We will also be discussing which parks we would like to see master plans worked on next year.

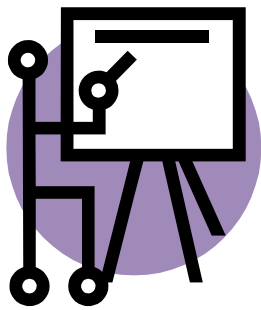
West Multnomah Soil & Water Conservation District Annual Meeting

Date: February 20, 2007

Time: 7:00pm
(Business meeting begins at 6:15pm)

At the Forest Park Neighborhood Community Center

360 NW Greenleaf Rd



Come meet the Directors and staff of the West Multnomah Soil & Water Conservation District. Learn about our services and projects.

Agenda includes:

Presentation of the District Annual Report for Fiscal Year 2005-2006.

Presentation of Conservation Planning & programs available to local landowners.

For more information call 503-238-4775x101 or visit www.westmultconserv.org



New Plants in Gabriel Park Swale

On Saturday, January 6th, fifteen volunteers installed over 500 plants in a swale on SW 45th Avenue near an entrance to Gabriel Park. These hard-working volunteers had a great time learning about swales, having fun, and getting more than a little muddy. Everyone had a great time and one more work party will be scheduled soon to finish off the swale with a few more plants.

While the swale is planted with mostly native plants, sedges, and rushes, there are also some plants included to lend aesthetic appeal to the swale; some of the showy plants include several kinds of iris and some bright, fragrant azaleas.

For more information of this project or the final planting work party for the swale, contact Marissa Dorais, 503-823-7016, or marissa.dorais@bes.ci.portland.or.us

When you contain stormwater on your property, you help protect rivers and streams and you can receive a discount on your stormwater bill.

Join us the 1st Tuesday of the month
6:30 pm at the Multnomah Center, 7688 SW Capitol Hwy

www.CleanRiverRewards.com



ENVIRONMENTAL SERVICES
CITY OF PORTLAND
working for clean rivers



Southwest Development Review

by Leonard Gard, Land Use Specialist
Compiled from development review and other notices

Pre-application conferences:

Notices of proposals:

LU 06-178977 GW DZ. Applicant seeks design and greenway review approval for exterior alterations to the Rivers Restaurant at the Avalon Hotel, at 0455 SW Hamilton Court, in **South Portland.**

LU 06-179778 DZM. Applicant seeks design review approval of a modification to increase the height of a rooftop cooling tower and screen from 10 to 16 feet for a tower building in the South Waterfront district, at SW River Parkway at Gaines, in **South Portland.**

LU 06-142962 LDS AD. Applicant proposes a four-lot land division for attached housing, at 5100 and 5104 SW Beaverton-Hillsdale Hwy, in **Hayhurst.**

LU 06-185242 AD. Applicant proposes a lot line adjustment and seeks an adjustment to increase maximum allowable lot size for one lot, at 10618 and 10626 SW 25th Ave, in **Arnold Creek.**

LU 06-178874 LDP. Applicant proposes to divide a site into three lots, at 7608 SW Hood Ave, in **South Portland.**

LU 06-186023 DZ. Applicant seeks design review approval to renovate a warehouse, at 6605 SW Macadam Ave, in **South Portland.**

Decisions:

LU 06-158204 DZM GW. Approval of design review and modifications for exterior remodeling, at 7524 SW Macadam, in **South Portland.**

LU 06-157691 AD. Approval of adjustments to garage wall length and setback, at 7331 SW 26th, in **Multnomah.**

LU 06-148368 DZM. Design review approval and modifications for a two-story, mixed-use development, at 6602 SW Capitol Hwy, in **Hillsdale.**

LU 06-173989 AD. Approval of adjustment to reduce a setback for deck stairs and landing, at 4037 SW Chesapeak Ave., in **SWHRL.**

LU 06-107928 LDS AD. Approval of preliminary plan for six-lot land division and adjustment, at SW Bond between Lane and Lowell, in **South Portland.**

LU 06-176691 AD. Approval of adjustments to reduce a setback, and to reduce the depth of a parking area, at 6425 SW 55th Dr, in **Hayhurst.**

LU 06-170660 AD. Adjustment approval for reduction of setbacks for an addition to a house, at 8405 SW 11th Ave, in **South Burlingame.**

LU 06-171343 PUD LDP. Approval of preliminary plan for a two-lot land division, a planned unit development amendment, and a tree preservation modification, at 4907 SW Canterbury Lane, in **Ashcreek.**

LU 06-179827 AD. Approval of adjustment to allow a garage/carport between a house and the street lot line, at 11000 SW Boones Ferry Rd, in **Collins View.**

LU 06-172623 TR. Tree review approval allowing cutting of two trees, at 5006/5014 SW Pasadena, in **West Portland Park.**

Public hearings:
(all hearings at 1900 SW 4th Ave unless otherwise noted)

LU 06-141199 LDS EN M. Applicant proposes to divide a 104,260 SF site into three lots and two resource tracts, at 3302-3304 SW Scholls Ferry Rd, in **SWHRL.** A hearing is scheduled for February 7 at 9 am., Suite 3000.

LU 06-177328 ZC. Applicant proposes a zone change from R20 to R10, at 11700 SW 35th Ave, in **Arnold Creek.** Hearing scheduled for February 12 at 9 am, Suite 3000.

EA 06-182203 DA. Applicant seeks design advice for a proposed eight-story condominium building, at SW Sam Jackson Road, in **Homestead.** Hearing was scheduled for January 18.

Final plats:
3443 SW Alice St,
Measure 37 claims:
6917 SW 48th Ave, 1826 SW High St,
Notices to demolish:
6744 SW 63rd Ave,

Schools Committee

Will Fuller, 503-764-5501

The February 15 Schools Committee meeting will feature a discussion with Cynthia Harris, Area Director for the Wilson and Jefferson clusters about plans and ideas for Wilson cluster schools. The meeting is open to the public and guests are welcome.

We will continue a series of speakers throughout the year. Our March meeting will be on school safety and crime issues, and we have invited Michael Boyer, the dynamic new Southwest Crime Prevention Coordinator, to review his program for the area.

We will also invite speakers about SUN school (Schools Uniting Neighborhoods) programs in the Southwest, as well as about private schools in the area, and other topics of interest to Southwest residents.

Our main focus will be on building stronger contacts between the local schools and neighborhood associations, which still are somewhat separate areas of interest. For example, our January meeting featured a speaker from Community Partners for Affordable Housing, which works actively with parents in their housing developments to build good school involvement and resources for the children.

There are still openings for school committee reps from some neighborhoods. Contact the SWNI office or your neighborhood association to apply for a position.

Next meeting: Thurs, Feb 15, 7 pm
Multnomah Center
7688 SW Capitol Hwy

Land Use Committee

John Gibbon 503-708-6708

Infill development is a big issue on both sides of the river. In the SWNI area, Ashcreek and Maplewood in particular have expressed concerns about infill housing not in character with the neighborhoods. The Citywide Land Use Group for some time has been following this issue through a subcommittee, and now Citywide is hosting a "Community Conversation" on infill on Saturday, February 24, 9 to 1, at 1900 SW 4th Ave. It's open to the public.

SWNI's board adopted the committee's position on tram fares--that they should be equivalent to TriMet fares, and that TriMet transfers and passes should be honored, and that the tram should run seven days a week--and a letter went to city council.

In a Homestead land use case, a design advice hearing was scheduled to be heard on January 18 for a project comprising three eight-story condominium buildings on SW Sam Jackson Road, at the hairpin turn close to the Marquam Hill Trail head.

A Measure 37 claim has been filed on the Riverview Cemetery property. In another Measure 37 claim, claiming loss of value due to environmental overlay zones, city council denied the claim, taking the position that environmental zones are exempt from Measure 37 because they protect public health and safety.

Next Meeting: Tuesday, Feb. 20, 7 pm
Multnomah Center
7688 SW Capitol Hwy

Committee Reports..

Public Safety Committee

Nancy Hand, chair, 503-452-9483

At our January meeting we are scheduled to have a representative from the School Police. We are very excited to have them as guests. We have been wanting them to come for some months. We are interested to know what their role is? How they work within the City Police? How can we as community members work together with them?

We were successful in getting the small grant for the SWNI Crime Prevention Committee. It is \$850. We will be able to put together an insert for the newsletter next October during Crime Prevention Month. We will also have a budget for the annual police reception in October. It is very exciting.

Our Neighborhood Response Team Officers are Officer Mark Friedman, 503-823-0234 and Officer Brian Hughes, 503-823-0235. We encourage anyone from the community who wants to meet them, or if you have neighborhood issues our crime prevention meeting is the place you can address them.

The city is working on the budget so be sure to watch for community input sessions on the police budget. Dates are set for February 7 and 22. The meeting time and location will be posted at portlandonline.com, as of this time they aren't set yet. See you at the next meeting February 27.

Next Meeting: Tuesday, Feb. 27, 7 pm
Multnomah Center
7688 SW Capitol Hwy

SWNI Board

Glenn Bridger, president
503-245-0729

In February, the SWNI board plans to host a "Communications Retreat." The focus will be to review what communication tools we already have available to us. Look at ways we as neighborhood leaders can become better communicators. We will also review new communication technology and decide what tools are going to work for SWNI and its affiliate neighborhood associations. Finally, we will brainstorm on specific communication trainings members would like to have made available to them over the next year. The retreat is scheduled for Saturday, February 24th (location and time to be announced), please call Sylvia, 503-823-4592 if you are interested.

In January, the board tried to host an information forum on the Charter Review. Due to poor weather conditions the event was cancelled. The Charter Review Commission's proposal was presented to the Portland City Council on January 18th. The council will vote on whether to refer the recommendations to the voters on February 7th.

Next Meeting: Wed., Feb. 28, 7 pm
Multnomah Center
7688 SW Capitol Hwy.

Parks Committee

Kirky Doble, 503-246-7970

Rod Wojtanik came to our January meeting to talk about skate parks. City council has called on Parks & Recreation to do build two more skate parks, one at Gabriel Park. It would be located close to where the outdoor exercise stations used to be, adjacent to the lower parking lot, and would include stormwater management improvements to the park lot and additional parking spaces. Rod will come back to our committee in March to talk about a public information program for the project.

Bob Schulz and Terri Davis were our next guests. Bob is taking a new position as Parks & Recreation, and Terri is his interim successor as SW zone manager. Bob is briefing her on SW projects at Duniway, Dickinson, Spring Garden, and Markham School. Bob will be leading a new team focusing on marketing.

The committee heard discussion on the efforts of South Portland and Hillsdale to get a concert series this summer: two concerts in each neighborhood. The committee supports the effort and will form an advisory committee.

Finally, the committee approved a motion supporting the position of the Marshall Park NA, calling for conjunctive planning for Marshall Park and Tryon Creek State Natural Area.

Next Meeting: Thurs. Feb. 1, 7 pm
Multnomah Center
7688 SW Capitol Hwy

Emergency Preparedness Committee

Michael Kisor, <http://ep.swni.org/>

They say the third time is a charm. After two postponements, we hope to finally have our NET redistricting discussion and identify all the staging areas for our SW Neighborhood Emergency Teams.

Background and agenda information may be found on our web site (<http://swni.org/node/345>). Feel free to post comments in advance of the meeting on that web page.

Next Meeting: Thurs., Feb. 8, 7 pm
Multnomah Center
7688 SW Capitol Hwy

Transportation Committee

Patty Lee, 503-244-2871

January's snow storm forced the cancellation of what would have been an interesting committee meeting: Commissioner Sam Adams was scheduled to continue a conversation with the committee on the issue of using "halo" local improvement districts (LIDs) to improve collector streets in SW Portland. In the committee's last conversation with Sam, the proposal centered on picking one or two "pilot" projects to start with. Committee members at and since that meeting have identified nine possible projects. Two of the projects are Dosch from Patton to B-H Highway and south along 31st and 30th from Multnomah Blvd. to the new Headwaters development just off Barbur. We'll try to re-schedule a meeting with Sam in February or March.

On a second track, a subcommittee is looking at alternatives to LID funding of street improvements. One alternative discussed was county-wide funding similar to Washington County's program. Subcommittee members were scheduled to meet with a PDOT manager in late January to discuss ideas.

With transportation, one question often begets another. Following up on earlier discussions, the committee hopes to invite PDOT staff later this year to talk about the South Portland Circulation Study and intelligent transportation systems (ITS).

See the land use report regarding SWNI's position on tram fares.

Next Meeting: Wed, Feb. 21, 7 pm
Multnomah Center
7688 SW Capitol Hwy.

SW Trails

Don Baack, chair, 503-246-2088

See article page 3.

Next mtg: Thurs., February 22, 7 pm,
St. Luke's Lutheran Church
6835 SW 46th

Neighborhood Reports

Arnold Creek

Tues., February 13, 7 pm, Jackson Baptist Church, 10558 SW 35th (lower level)
Nancy Hand, 503-452-9483, enchand@hotmail.com

Thanks to all who came last month. I was very happy to see a local Wilson High senior at our meeting. Thanks for coming, Daniel; it makes me confident to know we have such great kids as future leaders!

We had great news again this month. We received \$600 from the SW Neighborhoods Small Grants. We will purchase lawn signs and a banner. We will purchase items for our meet-and-greet packets and also do copying for outreach.

I also wanted to update you all on accidents on Boones Ferry. I notified our neighborhood Officer Mark Friedman. He emailed me back that there have been two accidents at the Stephenson and Boones Ferry intersection. One was a head-on collision when someone crossed over the center line. Another one was a failure to stop on Stephenson and they collided with a car. Thanks to Sam and others who emailed me pictures of one of the accidents. I forwarded them on to Officer Friedman and have also alerted PDOT of the accidents.

We had a couple of land use notices last month. One for a zone change on 35th and Stephenson. The hearing is February 12. Another is an adjustment on 25th behind Maricara Park. They want a lot line adjustment so they can do a partition later on.

Ashcreek

Monday, February 12, 7 pm, Multnomah Center, 7688 SW Capitol Hwy
Jack Klinker, 503-246-7872, jklinker@ease.com

The Ashbaugh development at 8635 SW 54th is being held up with stormwater issues by the city. The water drains onto private property with no real stormwater handling mechanism. The city is still talking about requiring paving to 20 feet on the lane even though this will just increase traffic onto the same private property. This section of 54th is one of the most problematic streets in SW Portland.

David Weidner discussed the flag lot land division that he is requesting at 6048 Brugger. A bunch of Brugger St. residents attended. They all spoke against the splitting up of the lot. Many spoke of the historic nature of the development and of the original Brugger dairy. One neighbor noted that a local realtor had told her that an undivided parcel would sell for roughly what the two smaller lots will bring. We passed a motion opposing the land division.

We will have a guest, Tye Trepanier, in February to discuss a possible two-lot land division at 5511 Taylors Ferry. Another flag lot. But we should get more pedestrian paving along Taylors.

The initial paperwork has come through for Hartmann Motors to re-zone the residential section of their property at 64th and Barbur. We hope to work with them and Ash Creek Commons to get sidewalks and other pedestrian and bike improvements along Palatine.

The city has proposed putting up just two *No Parking* signs near the intersection on SW 54th. They would face Garden Home Rd. The neighbors have decided not to appeal.

We may have a trails chair to fill that vacancy. A 54th St. neighbor already attends the SW Trails meetings as Washington County's representative. Her identity will be disclosed when the deal is done!

Small grant! We received \$1500 to do our outreach program. We are thinking of doing stream improvements on Ashcreek near 62nd and Pomona and maybe some trails.

Collins View

Wednesday, Feb. 7, 7 pm, Riverdale High School, 9727 SW Terwilliger, Rm 201
Charlie Weiss, 503-799-4848 charliew@launchbx.com, www.collinsview.org

Land Use: Riverview Cemetery has filed a Measure 37 claim for approximately 185 undeveloped acres bounded by the cemetery, Lewis & Clark College, Macadam and Palatine Hill Rd. This land is currently zoned OS - Open Space. CVNA has not yet received official notification of Riverview's plans, but learned about the application through an article in the Portland Mercury: (<http://www.portlandmercury.com/portland/Content?oid=95227&category=22101>).

CVNA Land Use Chairs Dave and Dixie Johnston, as well as David Ellis of Lewis & Clark College, are beginning to look through the hefty application file. So far, we've learned that Riverview is asking for \$24 million - or the removal of open space and environmental zone restrictions on the property, which would allow the land to be developed for housing. Plans and drawings of potential development on the site show upwards of 100 new homes.

Development of this site on this scale would have profound impacts on livability in Collins View, especially as it relates to traffic and congestion, issues that we already struggle with now. Under Measure 37 the city has only 6 months to process claims, so we will certainly be following this closely and taking every opportunity to be heard. We are still in the information-gathering stage, and will keep neighbors updated as we learn more.

Transportation Task Force - Our new transportation task force is starting to contact adjacent neighborhoods that also have a stake in the traffic situation on SW Terwilliger Blvd, Boones Ferry Rd. and Taylors Ferry Rd. The task force is currently made up of Thomas Hagerman (superintendent of Riverdale School District), David Ellis (Lewis & Clark), Dave & Dixie Johnston (CVNA Land Use Committee chairs), Gene Lynard (CVNA Crime & Safety Committee chair), and Prakash Joshi (CVNA Transportation chair). We are also hoping to have a participant from PDOT join the team. These folks will be taking the lead in our campaign to resolve the complicated traffic problems that occur at Collins View's major intersections.

Meanwhile, Prakash continues to work with PDOT on better synchronizing the lights at Terwilliger and Taylors Ferry. We'll soon be getting more sophisticated sensors that will better match the length of the green light to the number of cars in a lane.

Local Improvement Districts - We talked briefly about LIDs and are waiting to learn more specifics from Sam Adams' office on how and where they might be used to fund street improvements in SW. We were reminded by Prakash that this is a separate issue from the intersection fixes we are seeking. Those fixes should not be funded through the use of LIDs, as they are regional rather than local.

Crime & Public Safety - Michael Boyer, our new Southwest Crime Prevention Program Coordinator, introduced himself at the meeting. The crime prevention program is a great resource for neighbors trying to resolve ongoing issues. Michael is already getting involved in our discussion with Lewis & Clark regarding problem rental properties. Michael can be contacted at 503-823-3131. More info on crime prevention services can be found at: <http://www.portlandonline.com/oni/index.cfm?c=28395>.

Outreach - We are currently working on organizing a few neighborhood events and activities. Look for more information soon on neighborhood walks, potlucks, and bus trips to scenic Hillsdale. And if you have other ideas for increasing our positive engagement with each other outside of meetings, please let me know! (tarynlk@hotmail.com).

John Miller is continuing to work on fleshing out www.collinsview.org. Check it out and let him know if there's anything else you'd like to see on our website. (miller@lclark.edu).

At our next meeting representatives from TriMet who will give an update on Bus #39.

Bridlemile

Wednesday, February 14, 7 pm, Bridlemile School, 4300 SW 47th Ave
Kathy Bambeck, kathybambeck@spiritone.com, 503-245-2634
<http://bridlemile.swni.org/>

Bridlemile Creek Stewards Meeting - Tuesday, February 13th, 7 pm, Watershed Resource Center in the SW Community Center at the corner of SW 45th Ave and Vermont St. (Parking: In parking lot behind the SW Community Center, off SW 45th Ave.) Planning for upcoming meetings and events.

BNA Monthly Meeting - Replacement Tower for Council Crest: Bob Ochs of the Bureau of Technology Services of the City of Portland will speak about the proposed new communications tower that is to replace the current one on Council Crest. Although not in Bridlemile, the tower is visible from most of the neighborhood. Victor will talk about some possible changes and improvements to the BNA website.

Saturday, February 17th, 2007 - Hamilton Park Creek Restoration Planting and Community Service Event: 9 am - noon, Hamilton Park SE of the tennis courts (Parking: On SW 47th above/north of the tennis courts.) We'll be planting native plants throughout the restoration area. Get free native plants and a hot lunch. Tools and refreshments will be provided. Dress for the weather. Note that this event qualifies as Community Service hours for students. Contact: Steve Mullinax, 503-768-9065; Greg Schifsky, 503-246-2714

History - At the back of Rick Stier and Linda Fitch's property is "Lee's Spring." It really should be called the Stier/Fitch Spring now, but it has been referred to as Lee's Spring by more than one long-time Bridlemile resident. It is a beautiful spring, thanks to the rejuvenation by Rick and Linda. The spring is at 47th and Hamilton. It has been there since Andrew Tigar's Donation Land Claim. Roger Hancock remembers his grandfather, Arthur Rogers, talking about a goat drowning in it. The same ducks come each year to enjoy it. There are lots of springs in our neighborhood. Do any of the others have names? Let us know.

Land Use - The BNA board voted to approve Karen Tabata as Land Use chair pro tem. Karen and Rich are still seeking an additional volunteer to help with land use issues and meetings.

Schools - Jon Cohen is the most recent candidate and, if approved at the March board meeting, will become Schools chair. "I would like to volunteer to serve on the SWNI Schools Committee. I stay informed about school issues at all levels (local, district and state), advocate for schools whenever possible, and have actively volunteered at Bridlemile for several years. I served on the Bridlemile Foundation board for three years, have worked with Debi Bradway for many years, and I know all of the parent leaders at Bridlemile. I will be an effective representative for our neighborhood on the SWNI Schools Committee." If you can help with or are interested in the Schools chair position, please contact Ginger or Victor and come to the March BNA board meeting.

Transportation / Pedestrian Safety - At the February BNA, Bev explained that Sam Adams believes that the addition of sidewalks to some of our streets can be funded probably only by halo LIDS, whereby whole neighborhoods that benefit by the additions of sidewalks help share in the cost of construction of the sidewalks. He wants neighborhood associations to suggest the neighborhood collector streets that need sidewalks in their neighborhoods. Then, from the list of suggested streets, a committee will select most likely candidates for a pilot project that is most likely to have community support and willingness to participate in a halo LID project. In Bridlemile, Hamilton and Shattuck are its two collector streets and after some discussion, those attending voted to designate Shattuck from BvHwy to Hamilton, and Hamilton from SW 60th Place to SW 42nd, as the portions most in need of pedestrian improvements. The next step is to form a working committee to do a detailed analysis of those streets and make recommendations for the types of pedestrian improvements along them. If you are interested and can help, please contact Bev.

"The SWNI Transportation Committee has changed its meeting date to the 3rd Wednesday night of the month, and I have a conflict with that night. Also, I think the transportation chair has to be younger, have more energy and strength, and be more adept and interested in doing all the politics that this position requires. This position requires someone who really burns with interest in and enthusiasm about dealing with all the inner workings of City, Metro, and State transportation politics. It is really an important position to have for the neighborhood association" and since I can no longer attend the meetings I have resigned as Transportation chair. If you can help with any of the above transportation committee activities or are possibly interested in becoming BNA Transportation chair, please contact Bev.

Volunteer to help with any of the projects listed above, assist on one or more committees, or bring your own proposal to one of our meetings. Please note that in order to give your proposal adequate time on the agenda and include it in the SWNI newsletter, we need to know of it no later than previous month's BNA meeting. Your contribution of time and knowledge, large or small, helps keep and make Bridlemile the wonderful neighborhood that we all enjoy. Together we can do most anything, and your volunteer time makes the difference. For more information about all the topics listed here and much more, please visit the BNA web site at <http://bridlemile.swni.org/>

Ongoing Neighborhood Projects, Committees

Business Liaison - Dave Buchner, dave@davebuchner.com.

Community Outreach - Kathy Bambeck, 503-245-2634, kathybambeck@spiritone.com.

Creeks - Steve Mullinax, steve.mullinax@alum.mit.edu, 503-768-9065 or Greg Schifsky, 503-246-2714, gregsch@hevanet.com.

Hamilton Park Foot Patrol - Ellen Underhill, ellenunderhill@comcast.net.

History of Bridlemile - Ginger Danzer, 503-292-9460 ggdanzer@comcast.net.

Land Use - Karen Tabata, ktabatas@comcast.net, 503-292-4377 Chair pro tem; Rich Adelman, 503-223-0992, richard.adelman@gbjarch.com assistant **NET** - Dennis Siegman, dennis_siegman@juno.com 503-291-7417.

Parks - Chris Kahle, roof14@mac.com, 323-717-6606.

Safety & Crime - Tom Doberstein, t.doberstein@comcast.net, 503-319-5884.

Safe Routes to School (SR2S) - Lynne Mutric, lynnem@actsoregon.org, 503-656-7329; or Lillie Fitzpatrick, nunnation@earthlink.net, 503-892-9921.

Schools - TBD
Transportation/Pedestrian Safety - Beverly Vogt, bevvoigt@comcast.net, 503-292-6939 acting, pending new Chair

Trees - Greg Schifsky, 503-246-2714, gregsch@hevanet.com.

Website - Victor von Salza, <http://bridlemile.swni.org/>

Neighborhood Reports

Crestwood

Wednesday, March 14, 7 pm
West Portland United Methodist Church, library
4729 SW Taylors Ferry Rd

Wes McMullen, 503-244-2659, wes@ecosolvents.com
http://www.CrestwoodNA.home.comcast.net

Dickinson Park: http://groups.yahoo.com/group/dickinsonpark/

No Meeting this Month: Plan to attend in March! As outlined in our bylaws, this month, February, is a no-meeting month for your Crestwood NA. Our next regular meeting will be Wednesday, March 14, 7 pm, at the usual location outlined above. Here are some areas of interest that will be covered at the March meeting and meetings in months to come: Neighborhood actions and activities plans for this year; zoning; housing development and infill issues; Metro Councilor Robert Liberty's walk through the neighborhood; continued West Portland Town Center status investigation; joint Ashcreek/Crestwood mass mailing and survey scheduled for February; decisions on streets we'd like to see improved in Crestwood for Portland Department of Transportation; getting money to finish the Dickinson Park playground structure; and election of CNA officers. By planning to be at the March meeting and the balance of meetings this year, you and your neighbors will have a say in what efforts your neighborhood association undertakes and what directions they go to make your spot a better place to live ... and perhaps to preserve your vision of what you want Crestwood to be.

Actions and Items of Interest from January's meeting: The last meeting held in January items discussed and/or acted on: Ac-

tivities around the Hartmann property along Barbur and their request to rezone part of their property that would provide parking for Ashcreek Commons; official support for Ashcreek Neighborhood's concerns about development plans at the 61st and Pasadena Street site with an official letter to Ashcreek to that effect; joint Ashcreek/Crestwood satisfaction survey and information piece to all households in Ashcreek and Crestwood letting citizens know about land use, spring creek cleanup and other issues of concern to both neighborhoods conducted by Ashcreek NA; how to proceed with financing of neighborhood street improvements and the PDOT map of neighborhood collectors such as Taylors Ferry Road and SW 55th in Crestwood; \$1,170 grant from SWNI for movies in Dickinson Park this summer to generate local and regional interest in park stewardship; volunteerism and the playground effort; Dickinson Park playground structure and site making the city's top ten park improvements for fiscal budget 2008 at just under \$150,000; and West Portland Town Center concept which is still being explored such as what would be the impact, if any, if Metro removes the designation for the area surrounding the intersection of Barbur Blvd, I-5 and Capitol Highway.

Far Southwest

Tuesday, March 12, 7 pm
Comfort Suites Motel, SW 60th & Barbur

Marcia Leslie, 503-246-9938 or Jerome Johnson, 503-452-0950
mmac_les@yahoo.com or jeromejohnson@surfglobal.net

Marcia Leslie and Jerome Johnson are serving as co-chairs until a replacement for the position of president can be found.

A hearty thank you to April Fong for her continued efforts to report and register all Far Southwest meeting minutes.

Thank you to Sylvia Bogert for attending our January meeting and facilitating that meeting.

Please contact us to put your agenda items on our next meeting schedule.

Hillsdale

Wed., February 7, 7 pm, St Barnabas Church, 2201 SW Vermont
Don Baack, 503-246-2088 baack@pacifier.com

1. Approval of agenda
2. Review of January 2007 meeting minutes--see Hillsdale website (http://www.hna-pdx.com).
3. Community Connect Presentation.
4. TriMet presentation on status of line 39, ridership and other TriMet issues.
5. Should we rename Bertha Court?
6. Results of SWNI grant applications grant requests. (Plaza planning, Wilson planning, website).
7. Update of "The Watershed" project.
8. Update Hillsdale transportation and SDC.
9. Hillsdale Plaza Charrette & Planning: 2 charrettes scheduled Feb. 11 and 25, 10 am - 2 pm at the Hillsdale Farmers' Market.
10. Hillsdale Triangle master planning proposal.
11. Wilson Pool north entrance.
12. Other HNA land use issues.
13. HBPA report.
14. SWNI report.
15. Fulton Park Community Center grant.
16. Update on status of Stephens Creek walkway.
17. Update joint application for a joint website development with HBPA.
18. Update on Rieke and Wilson High School reader board/entrance gateway design.
19. Update of the Reinvent Rieke response from the Portland School District and board members.
20. Update on BES action on our streets.
21. Haines Park Ivy Removal: Saturday, February 17, 9 am - noon. Meet at SW Nebraska & Terwilliger and follow the signs. For more information, contact Don Baack, 503-246-2088, baack@pacifier.com.

Hayhurst

Tuesday, April 3, 7 pm, Hayhurst Elementary School, 5037 SW Iowa
Lillie Fitzpatrick, lf@pdx.edu, www.neighborhoodlink.com/portland/hayhurst

Michael Boyer, SW Crime Prevention Program Coordinator, introduced himself at our meeting. Michael works with Portland Police, neighbors and neighborhood associations to reduce crime and nuisances. He can be reached at 503-823-3131, Michael.boyer@ci.portland.or.us. He reported that there has been a spike of car prowls in SW Portland. He recommends leaving your car as clean as possible - not even an empty bag - to decrease the likelihood of you becoming a victim. He also recommends taking your car registration and any personal identifying material with you when parking in an exposed location.

There is a garbage investigator available to deal with garbage dumping at 503-797-1835.

David Fuks, CEO of Cedar Sinai Park (CSP), reported that the quarter-mile trail through the woods has been completed with benches, handrails and gazebo. It is a long-awaited addition to the campus and is accessible from the rear of the Rose Schnitzer Manor. Neighbors are welcome to enjoy the trail, but please respect the senior residents by using no bikes, skates or skateboards, keeping your dog on a leash and cleaning up after yourself and your dog.

David reported that CSP is branching out into home health care, allowing elderly individuals to stay in their homes longer. Also, architects have been hired to prepare drawings of the new nursing facility. Neighbors will be invited to view and comment on the drawings soon. CSP expects construction to begin on the new nursing facility within three years.

A land use application has been submitted to subdivide the lots at 5100 & 5104 SW Beaverton-Hillsdale Hwy into four lots, presumably to construct a 4-plex. The Hayhurst NA will submit comments on the water runoff and parking issues.

All the SW neighborhood associations have been asked to participate with Girl Scouts, Boy Scouts and local faith organizations on a major food campaign called SW HOPE: Feed the Hungry. This campaign is to raise food and monetary donations for Neighborhood House. Neighborhood House is our local social service agency which offers a myriad of programs in SW Portland. SUN schools, mentoring, senior services, homeless-transitional housing, and low-income health services are just a few of the needs Neighborhood House fills.

Neighborhood House's Food Box program received a huge financial cut this year, while demand for the boxes is at an all-time high. During the 20 years between 1980 and 2000, Neighborhood House served an average of 65-75 families a month with their Food Box program. Today, between 250 to 280 families or 800-1,000 individuals are being served each month.

We will be asking for volunteers and donations during the weeks of February 23 through March 18th. Volunteers may canvass the neighborhood soliciting donations or deliver donations to Neighborhood House in Multnomah Village.

Next meeting Robin Morrison, new principal of Hayhurst Elementary, has invited all residents, local businesses and interested individuals to meet her and hear her vision for Hayhurst at our next meeting, April 3, at Hayhurst Elementary.

Homestead

Tuesday, February 6, 7 pm, OHSU CDRC, 707 SW Gaines, 3rd floor
Susan Egnor, stegnor@comcast.net, 503-221-6981, HomesteadNA.org

Tram Fares Update: In light of positions taken by our neighborhood and others, the tram executive management committee deferred deciding the fare and related issues at their January 10 meeting. Commissioner Sam Adams has invited comment on his blog. At this writing (January 15), the outcome is unknown.

January Meeting Report

1. Sam Jackson Park Road Condo Project: Norm Schoen of Myhre Group Architects presented plans for a 273-unit condominium development on 6 acres of environmental overlay property on Sam Jackson Park Road near Marquam Nature Park. Under the environmental overlay, the owner may develop only 30% of the property, or about 2 acres. The owner, Kelly Yeung, proposes a concentrated development of 279 units with 367 parking spaces. This density is within the zoning limits applicable to the property. The parking will be all underground. The development will back into the hillside in front of a very large retaining wall and will be 25 feet from the roadway. To achieve this density, the developer will ask the city to waive the 55-foot height limitation in the Terwilliger corridor and seek permission to build to 85 feet. The design advisory review with the city planning commission was January 18.

Comments and discussion focused on concerns about the traffic impact. Land use representative Anton Vetterlein calculated that with 6 vehicle trips per day for each of the 367 parking spots (the number PDOT uses in determining usage), the project would add substantially to an already overburdened roadway. He said the neighborhood could challenge the height waiver request; a successful challenge on that basis could reduce the overall number of units. Other discussion included pedestrian concerns and linkage to hiking trails.

2. Transportation - Tram Fares: The neighborhood association wrote Commissioner Adams advocating for tram fares for the neighborhood in line with the TriMet system as originally described and including transferability to and from TriMet. Transportation Representative Tom Miller reported the Southwest Neighborhoods, Inc. Transportation Committee and the SWNI board supported our letter and also asked for integrated fares at a TriMet-based price. Tom reported the city is proposing a \$4 round-trip-only fare with no tram operation on Sunday and no transfers to TriMet.

Traffic Calming CAC: The committee will meet once more in January. The committee will take its representations to the neighborhood as a whole in a meeting in February.

Other Transportation: Tom reported ODOT is working with PDOT to alleviate the backups of cars trying to avoid traffic jams on I-5 and Barbur Blvd. Tom also reported that SWHRL is considering buying portable traffic speed monitoring signs that would be attached to telephone poles in an attempt to slow speeders.

3. Land Use: Anton Vetterlein reported last May that an application had been filed to build 26 townhouses on SW Broadway and Sam Jackson Park Road, parcel number R327712. There is some question as to who owns this property.

4. OHSU: Jack Dempsey reported in response to questions that Trail 24 construction is being delayed because the bids have come in over the amount budgeted. The university is considering its next steps.

5. SW Sixth Avenue Drive Metered Parking Spaces: The association voted unanimously to ask the city to remove the 8 metered parking spaces on the west side of Sixth Avenue Drive. The spaces were put in over neighborhood objection and, like similarly installed spaces further along the same street, should be removed without "docking" the neighborhood's share of parking meter revenues. The association has written the Department of Transportation conveying this position.

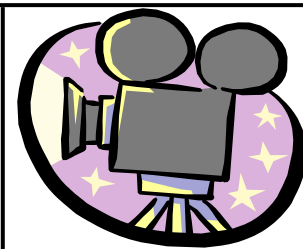
Multnomah Outdoor Cinema

Goes Indoors for a Valentine's Treat!

Sunday, February 11th

Willy Wonka & the Chocolate Factory

Doors Open @ 1:30 Movie @ 2:00
Multnomah Center Auditorium, 7688 SW Capitol Hwy.



Thanks to our sponsor
Sweets Etc.

www.multnomahoutdoorcinema.org

presented by Multnomah Neighborhood Association, SWNI & Riversgate Church

♥ Donations boxes will be on site to help fill the Neighborhood House Pantry ♥

Maplewood

Monday, February 12, 7 pm
Friends School, 7426 SW 52nd

Anne-Marie Fischer, 503-452-4240, chair@maplewoodna.com

December was a slow month for the Maplewood NA, but we did get some great news at our January meeting. Anne-Marie Fischer announced that Maplewood's application for a SWNI Neighborhood Grant was approved. We were awarded \$1,000 for our summer picnic and \$500 toward sign caps in our neighborhood. Thanks to Anne-Marie Fischer and John Barimo for their efforts to make this happen!

Anne-Marie also gave an update on the SW 63rd subdivision. A notice of demolition is posted on the site. The demolition permit was applied for on Jan. 2nd and will be approved on Feb. 7th.

Nick Corrado attended the meeting to explain his Measure 37 claim on SW 49th Ave.

We had a brief discussion concerning our website with the consensus being that we should determine how our website could best promote communication within Maplewood. You can visit the website at www.maplewoodna.com and see for yourself. Please check it out and if, after visiting the site, you have ideas about ways to make it better and easier for all of us to use, please contact Gary Swanson-Davies, Technology Committee chair, by clicking on the link in the right sidebar.

Jim Battan reported that the Maplewood School playground committee received a \$2,000 Neighborhood Grant for improving the playground. He also reminded us that the native plant sale will be on Saturday, April 14th, this year. The proceeds of the sale benefit Maplewood School.

Micki Carrier, Maplewood's Outreach Coordinator, suggested we send out a postcard announcing our annual membership meeting on March 12, 2007. All officer and standing committee chair positions are open for election at the annual meeting. No prior experience is required, other than your enthusiasm to make Maplewood an even better place to live. All positions may be shared if you have someone you'd like to team with, and just a few hours each month really helps! Visit our website (www.maplewoodna.com) and click on "Board Member duties" in the "please get involved" paragraph to see what's involved. Or you can contact any officer or standing committee chair if you want further information.

SW Trails work on the trail that leads from the upper parking lot of the Presbyterian Church, on SW 45th, to SW Miles Court was on January 20th. The trail will be improved with stairs and gravel. A motion was passed to approve up to \$250 to help build the trail, and Laurie DeVos, Parks chair, suggested that we could show support for SW Trails by pledging \$10 for each stair. A pledge sheet was passed to the membership and \$160 was collected or pledged. Please plan to bring work boots, gloves, water, shovel, and a rake if you have one. If you have questions about the plans or the construction activity, please call Don Baack at 503-246-2088 and leave a message if there is no answer.

Chris Byrne made a second request for canned and non-perishable foods to be brought to the February meeting. She also requested warm, clean blankets or quilts be donated.

Multnomah

Tuesday, February 13, 7 pm

Multnomah Center, 7688 SW Capitol Hwy
Brian Russell, 503-869-1632 barusse@hotmail.com

Greetings, neighbors!

It's an exciting time here in Multnomah as many projects are picking up steam in terms of volunteer time and money to fund them. We also have a lot of good ideas that are just over the horizon that show potential to improve the neighborhood in a variety of ways.

First, we learned that we were awarded \$1500 from the Neighborhood Small Grants Program through Office of Neighborhood Involvement (ONI) and SWNI. The money will be used to help with our restoration and beautification of the rights-of way on either side of the bridge/viaduct. This is the first award we've received and REALLY will get the ball rolling towards actual work being done on the site. We'll keep you informed of our first work party.

Second, as you've probably noted on previous pages in this newsletter, we're having another movie night at the MAC Auditorium on Sunday, February 11, at 2 pm, when Sweets, etc. will be presenting Willy Wonka and the Chocolate Factory. This is currently scheduled to be followed by another summer movie run, tentatively scheduled for First Fridays in June, July, August and September. We can still use volunteers for any/all of these screenings.

Third, we're working on a project with two Portland State professors to develop a capstone class that will address the concept of social sustainability and how that can be developed here in Multnomah. Recently, the US Green Building Council has announced that there may be a LEED certification for "green neighborhood." Now, we're wondering if we can't blend the two together to create a class that could help us attain that level of livability, especially in light of the positive energy flowing through our neighborhood.

Finally, we have new representation in our association to some of SWNI's standing committees. Frank Rudloff, past chair of MNA, has stepped up to be our SW Trails representative. Joan Stein, a member of the Maplewood PTA, will be attending the schools committee on our behalf. Shay Nofsinger will be keeping her eyes and ears open at the Parks meetings. Additionally, we have about a dozen volunteers to help with the development of the Spring Garden Adventure Park, but we could still use a few more people. If you would like to help make this a reality, please contact me at 503-869-1632. Thanks to all of our awesome volunteers! You guys are the best!

Marshall Park

Thursday, February 8, 6 pm
Burlingame Pizza
1103 SW Taylors Ferry Rd

Jen Seamans Blatner
503-246-2434

marshallparkna@yahoo.com

Friends of Marshall Park:

At the January meeting, we looked over the draft of the new stewardship agreement for Marshall Park. This will define how Friends of Marshall Park, and Portland Parks & Rec. will work together for the good of the park. We have tentatively scheduled a meeting with PPR to review the stewardship agreement and work plan for Wed., Jan. 31, at 6 pm at Burlingame Pizza. First Saturday work parties continue, with next one Sat., Feb. 3, from 9 am to noon.

MPNA was awarded its grant proposal for \$2,000 for outreach via a new website, neighborhood survey, all-household mailing, nature walks, and more. The old website, <http://marshallpark.swni.org> will remain active until the new website of www.marshallparkna.org goes live. A copy of the grant is posted on the current MPNA website. Activity focus will be on the survey, website and mailing in the first part of the year, and door-to-door outreach and nature walks beginning in the spring.

Land Use: We briefly looked at several new divisions and adjustments proposed for the neighborhood. A big thank you to Karen Bersack for volunteering as land use contact to review incoming notices.

NET: Six MPNA neighbors took the NET training in December. This year we hope to assist neighbors in preparing 72-hour kits so that MPNA will be better equipped in the event of a major disaster. Two MPNA neighbors attended the monthly meeting of the Fire Station 10 NET Team.

Volunteers Needed: Assist point people with grant outreach activities (currently postcard and survey); help our webmaster generate ideas, photos, articles for the website; and network with SWNI Schools, Trails, and Transportation committees. Meetings are optional for committee contacts - we just need people to keep MPNA updated on critical issues via email, etc. Anyone interested in helping, please email marshallparkna@yahoo.com or call 503-246-2434.

A healthy parks, healthy Portland, healthy people message

by Bob Shultz, PP&R

As the weather warms, PPR wants to remind people to play it safe in parks and natural areas. Never walk on frozen ponds or other water features-- it is never safe.

As trails clear, 'black ice' can remain- people traveling on bike and by foot traffic should continue to use caution. Families trying to get the last few sledding trips in at their neighborhood park should take caution with dry spots and exposed branches on the ground.

South Portland (formerly CTLH)

Wednesday, February 7, 7 pm,

Tabernacle Seventh Day Adventist Church, 0206 SW Condor Ave.

Ken Love, 503-245-7795, TLC11@mindspring.com

www.southportlandna.org



Neighborhood rides the tram

The Portland Office of Transportation has sponsored several tram ride events for the neighborhood and each has been well attended. Of course, everyone has a different opinion. Some people think that the loss of privacy is worse than they thought and some people say it is not as bad as they thought. It seems that people directly below the tram are not as affected as those a house or two away due to the angle of view. Some people think the proposed \$4 fare is too high and point out that when the tram was proposed, we were told that the tram was going to use TriMet fares (currently \$1.70).

The Pursuit of Happiness

South Portland resident Stephen Leflar has spent many hours over the years researching the history of our neighborhood. He has compiled his findings into a book with the title *The Pursuit of Happiness: A History of South Portland*. Stephen has generously allowed the South Portland NA to sell the book on CD. The book is approximately 170 pages long and includes our neighborhood's history from geologic pre-history of our area to recent developments in South Waterfront. Stephen looks at the book as a collaborative project so if you have any additional stories or pictures that you are willing share with us, we would really like to hear from you. We are especially looking for pictures. If you have anything to share, please use our web page to email us. (www.southportlandna.org)



Hikers on the temporary greenway trail

Above is a picture of hikers from our January hike on the temporary greenway trail adjacent to the Meriweather condominiums. We look forward to the day the trail continues all the way along the river.

March board meeting in South Waterfront

The South Portland Neighborhood Association will hold its March meeting in South Waterfront at the OHSU Health and Healing building in the third floor conference room (Room 1A). If you are reading this before our February meeting, remember our February meeting will be at our regular location (see below) and we will return for April as well.

New restaurant in South Portland

We have a new restaurant in our neighborhood. Salmagundi has opened in the old Porcelli's Grocery location. The owners Robert Harris and Sheila Haegerty had a grand opening for the neighborhood and it was heavily attended and got positive reviews from neighbors. At this time, they serve breakfast and lunch with a dinner menu starting in early February.

Concerts in the park

Momentum has been started to bring concerts of the park's program to Willamette Park. We will be looking for more sponsors. Contact Ken Love, 503-245-7795, if you are interested.

South Neighborhood's web site is
www.southportlandna.org
Committee meetings

Transportation: Tuesday, February 6, 6 pm, Running Outfitters, 2337 SW 6th. Contact committee chair Bill Danneman at 503-228-9868 for more info.

Land Use Committee: Monday, February 19, 7:15 pm, at Lair Hill Market, 2823 SW 1st. Contact: committee chair Jim Davis, 503-248-9820.

Communications/Finance/Parks Committee: Wednesday, February 14, 7 pm, at Ross Island Grocery, 3338 SW Corbett. Contact: Lee Buhler, 503-227-0160, LEB@pacifier.com.

Markham

Tuesday, April 10, 7 pm, Jackson Baptist Church, 10558 SW 35th
John Gibbon, 503-708-6708, jtgorygun@aol.com
<http://www.wescorhvac.com/Markham.htm>

In January, Amanda Black reported that planting of the 17th Street Greenspace/Water quality feature in October was major success although the winter storms have been hard on some of the larger trees that Friends of Trees helped plant. Not surprisingly the water flow has been substantial even though some diversion work in the right-of-way is still needed to increase it to its maximum.

Tom Klutz and Tricia Knolls from the Water Bureau made a presentation on the Marigold Tank 17th Street Hydro Park. The Bureau's improvements will enhance the site's innate quality while maintaining or enhancing its physical separation from the street to make it more of a low intensity meeting place for the neighborhood.

We discussed the neighborhood transportation goals including making pedestrian gathering points on Taylors Ferry safe along with improvements to 26th to produce safe pedestrian access to Barbur's transit stops was discussed. Trevor Robbins volunteered to serve as Markham's representative to the transportation committee.

South Burlingame

Monday, March 12, 7 pm, Burlingame Baptist Church 125 SW Miles
Mike Andrews, 503-977-6262, mike.andrews@wrgdesign.com

The South Burlingame Neighborhood Association (the board) met on Monday, January 8th, at the Burlingame Baptist Church. It was the largest turnout of neighbors in the last three years of board meetings. The reason for the larger than normal turnout had to do with the questions neighbors had in regards to two new developments in the neighborhood.

The first one is proposed at 8426 SW 7th Ave to be developed by Palumbo Custom Homes. This development entails the removal of an older house and a replacement with a duplex. John Palumbo was unable to attend the meeting but did provide architectural plans for the board's review. The proposed duplex has two units with a common wall on this 5000s.f. lot. Each unit is proposed to be two stories tall (30' ht) and include an 8'-wide single car garage with a 9'-wide driveway drop, separate front entrance, 4' setback from the adjacent property line to the nearest duplex wall, a city-approved street tree, covered entry, and a 6' sidewalk at the property line. Existing housing surrounds the lot on three sides. Two additional trees are proposed in the rear of the lot and one near the entry drive for each unit. Half-street improvements are also indicated on the architectural plans submitted to the board for review.

Several comments and questions were expressed during the board meeting upon review of the plan. The board will forward a letter to John Palumbo and the city planner expressing those concerns. Updates will be posted in our next news letter if received in time.

The second development is proposed at 7908 SW Ruby Terrace. The board is requesting additional information of the proposed development and requests that the developer attend and present the plans of the development at the next neighborhood board meeting, if available. Neighbors are very interested in what is proposed for the site and are concerned about proximity of the development to adjacent existing housing.

The third item discussed was in regards to the cut-through traffic on the Carson Green space between SW 10th and SW 8th. The neighbors had mentioned that vehicles are driving down the greenway at night and causing damage to property and narrowly missing parked vehicles. Damage to the lawns is apparent and the neighbors are requesting that vehicular traffic be eliminated or reduced in these areas. We will work with the City of Portland to see if a barrier can be installed to prevent access. Neighbors expressed interest in a boulder barrier as a possible solution to restrict traffic, in lieu of a functional cable and bollard system. Neighbors also showed interest in adding trees to the open space area.

The last item mentioned in our meeting was very exciting. The board has been awarded a grant from the Neighborhood Small Grants Program from Southwest Neighborhoods, Inc. This is very good news as the board has several plans for 2007 designed to increase community interaction through the board and our neighborhood. Please keep your eyes posted for upcoming events with SOLV, neighborhood ivy removal with the No Ivy League, Burlingame Park Neighborhood Barbecue, National Night Out Block Party and South Burlingame Neighborhood entry signage.

Our next meeting will be held at the Burlingame Baptist Church on March 12th at 7 pm. We are actively looking for volunteers and look forward to working on some very exciting projects for the new year. Representatives from TriMet will be there to discuss the new bus route #39. In addition, we will be seeking additional information from Fred Meyer on the proposed store improvements. Please come join us and be part of this dynamic community.

West Portland Park

Thursday, February 8, 7 pm,
Markham School Library, 10531 SW Capitol Hwy
David Gens, 503-244-8043, neighborhoodlink.com/wppna

Islamic Center Proposal: Since the January 11 WPPNA board meeting had to be canceled, we were unable to hear from representatives of the Islamic Center regarding their new proposal for parking. Land Use representatives on the WPP board, Amanda Fritz and Rob Shirley, met with our neighbors to preview the center's ideas. A previously-approved plan for surface parking on a lot on SW Alfred may be changed to provide parking under a new gym facility for the mosque and Islamic Center School. The gym would be sized and designed to match adjacent homes and office buildings, with particular attention paid to perimeter landscaping and neighborhood aesthetics. We hope the review of this new proposal will be rescheduled for the February meeting.

Holly Farm Park: There now is heavy equipment at the park site. Perhaps construction will have started by the time you read this, or very soon thereafter.

More Parks News: The SW Parks Committee is still seeking a representative parent from Markham Elementary School to serve on a short-term, minimal meetings committee about the summer SUN Schools program at Markham. Please call the SWNI office, 503-823-4592, if you are willing to help.

City Charter Change Proposal: We will have a vote at the February meeting on a motion to go on record as opposing the proposed new city charter. If you would like to express your opinion on how this vote should go, be sure to attend the meeting.



7688 SW Capitol Hwy., 503-244-5204
(Open 9 am - 3:30 pm, M-F)

Neighborhood House, Inc. Senior Center

FREE TAX-AID

For taxpayers with low and middle income, with special attention to those age 60 or older.

Tax assistance appointments begin February 5th. You must schedule appointments. AARP Tax-Aid volunteers provide free tax counseling and preparation service. This service can answer most of the tax issues faced by low- and middle-income tax-payers. Be prepared to have your taxes filed electronically, allowing returns to come more swiftly. Please note: the volunteers will have time to handle only simple returns and appointments are limited to 50 minutes.

Appointments available Mondays and Wednesdays, February 5th-April 11th, from 9 am - 4 pm. Call 503-244-5204 to make an appointment. Actual appointments will take place at the Loaves and Fishes building at 7710 SW 31st Ave. in the Jean Wade Room Floor 1B.

Please bring the following when you come:

- You (and spouse) will need proof of identity (i.e., Social Security card)
- copies of all W-2, 1098, 1099 forms, SS numbers for all individuals to be listed on return
- Prior year's tax return.
- Childcare providers information
- Taxpayer's banking information.
- Estimated tax payments made.
- Amounts of other income.

Both spouses should be present or return will be delayed.

RUMMAGE SALE ALERT

We are now collecting items for our annual rummage sale in March. This is by far our biggest fundraiser of the year and its success is entirely dependent on your donations! What a great time of year to clean out the house and toss out things you are no longer using. Please consider donating any of the following items during Senior Center hours:

- household items
- small appliance
- dishes
- cookware
- decorative items
- small furniture
- clothing and shoes
- jewelry, sporting goods
- garden tools
- toys
- automotive equipment
- entertainment & exercise equipment
- craft supplies, and holiday decorations

If you have a large donation, please call the center for special drop-off times. If you have a large donation and are unable to deliver it during business hours, please call Mary at 503-244-8223

Sorry, we cannot accept stoves, tires, refrigerators, mattresses or sofa beds.

Programs & Services for Adults 55+

For more information or to reserve your place in the following programs/services, call 503-244-5204 or check the senior center newsletter.

BLOOD PRESSURE SCREENING: Second Thursday, 10 - 11: am. Free
QIGONG CLASSES: Monday, 10 - 11 am. Free.

SENIOR LAW PROJECT: 2nd and 4th Tuesdays. Appointments begin at 9 am. This service is available to you if either you or your spouse is 60+ years of age, and are residents of Multnomah Co. The initial 30-minute consultation is free, regardless of your income. Further assistance may be available for those meeting income guidelines. Local attorneys donate their time for this valuable service. To make an appointment, call 503-244-5204.

FOOT CLINIC: Third Wed., 9 am - 3:30 pm. Cost: \$27. Reservations fill up quickly. Make an appointment by calling 503-244-5204.

ACUPUNCTURE: Mondays. Appointment and payment in advance required. \$45 for first visit; \$35 for subsequent visits.

LOW-VISION SUPPORT & DISCUSSION GROUP: Third Tues., 11 am - noon.

FALUN GONG: Mondays, 1 - 2 pm. Free.

STABILITY BALL & YOGA: Tues., 11:30 am - 12:30 pm. Thurs., 9:10 - 10:10 am. Fee: \$3.

YOGA: Fri. 10 - 11:30 am. Fee \$3/session.

RHYTHMIC EXERCISE: Tues., 10:15 - 11:15 am. Thurs., 10:15 - 11:15 am. Fee: \$3 session.

CAREGIVER'S SUPPORT GROUP: Fourth Tues., 5 - 7:30 pm. If you have any questions, call 503-244-5204.

CONVERSATION CIRCLE: Wed., 1:30 - 2:15 pm.

MASSAGE: Tues. afternoons. Appointments and advance payment required. Fee: \$27 for 30-minute sessions.

Hearing Aid Testing: Second Wednesday 1 - 2 pm.

SENIOR CENTER MEMBERSHIP

Annual membership is \$20/individual and \$30/couple.

Membership includes delivery of our monthly newsletter and membership is required for participants in most activities, classes and trips.

Membership is open to all individuals 55 & older, or if the spouse is 55 years of age.

FEBRUARY TRIPS

Senior Center membership required
Call 503-244-5204 for more information.

Trip registration begins on January 29th for all trips!

LUCKY EAGLE CASINO: Wednesday, February 7th, 8:45 am-5 pm.
MOONSTRUCK CHOCOLATE CAFE: Thursday, February 8th, 10 am - noon. FREE.
Chinese New Year Cultural Fair: Saturday, February 10th, 10 am - 2 pm. Cost: \$4.50, plus \$3 for admission. Bring money for food and shopping.
Longbottom Roaster Tour: Wednesday, February 14th, 11:30 am - 3 pm. Cost: \$4.50. Bring money for food.
Community Orchestra and Band Concert: Sunday, February 25th, 1:45 - 5 pm. Cost: \$4.50
Bridgeport Village Mall: Wednesday, February 28th, 1 - 4 pm. Cost: FREE, Bring money for shopping or \$6 for theater tickets

ADVERTISE in Southwest Neighborhood News

- **Southwest Neighborhood News** is highly targeted. It is mailed and distributed to approximately 10,250 Southwest residents from our exclusive mailing list
- Low cost maximizing advertising dollars.
- As a nonprofit effort, SW Neighborhoods maximizes good will for your business, as your support contributes to a public information effort.



For rates or information, call Ginny at 503-823-4592, or check out our web page at swni.org

Community News

Food campaign to boost Emergency Food Box Program

Local organizations band together to support Neighborhood House

The holidays may be over, but a group of local faith organizations is launching a major food drive that aims to feed the hungry in Southwest Portland for four months.

The grassroots project, known as "Southwest Hope: Feed the Hungry," has the goal of collecting 50,000 pounds of food or the cash equivalent – which is what Neighborhood House estimates it needs to supply its Emergency Food Box Program for four months. The drive begins Feb. 23 and runs through March 18.

Led by St. Andrew's Presbyterian Church, the campaign involves several other area churches, businesses and grocery stores. The Rev. Patty Campbell-Schmitt, co-pastor at St. Andrew's, said church members were looking for a service project and were prompted to organize the food drive after hearing about the growing need for assistance at Neighborhood House. "We learned that the number-one need in our community was food," Campbell-Schmitt said.

St. Andrew's has teamed with Christian Science Church Southwest, St. Barnabas Episcopal Church, Phos Hilaron Church, Vermont Hills United Methodist Church and other faith groups to organize the drive. Local scout troops and Southwest Neighborhoods, Inc., are also involved. Local businesses, including Baja Fresh, will designate days where they donate a certain percentage of the day's receipts to the campaign.

To make it easy for people to participate, donation barrels will be placed at area grocery stores during the 4-week-long campaign. People may bring non-perishable food items to the churches listed above. Donations may also be dropped off at Neighborhood House, 7780 SW Capitol Highway. What's more, volunteers are set to canvass neighborhoods in Southwest between Feb. 23 and March 18 to accept non-perishable food and hygiene items and monetary donations.

As Southwest Portland's primary social service agency and local distribution center for the Oregon Food Bank, Neighborhood House has seen the demand for food boxes quadruple in the past six years, according to Executive Director Rick Nitti. The agency served between 250 and 280 families per month in 2006 through its Emergency Food Box Program. A larger number of people seeking assistance puts a strain on resources and necessitates a greater push for community involvement, Nitti said.

"The community has traditionally done a tremendous job supporting our program," he said. "I'm so grateful for the ongoing support, and for this major undertaking that is community-driven."

The campaign can't come at a better time for Neighborhood House, which has seen what little public funding that was available for the Food Box Program be reallocated due to new state spending regulations. Grants and donations have kept the program running, but it is critical to find a long-term funding solution, Nitti said.

"I'm confident that we will always have support from the community in terms of donations, but we have got to find dollars to stabilize the program for years to come," Nitti said.

For more information on the food drive, contact Pastor Campbell-Schmitt at 503-246-4276 or email her at tandpcs@msn.com.

Valentine-A-Grams Offer two gifts in one

Valentine-A-Grams allow people to give two gifts in one by sending someone special a tasty treat while also supporting seniors in need.

Volunteers for Loaves & Fishes Centers, The Meals-On-Wheels People, will deliver Valentine-A-Grams to individuals and businesses on the morning of Wednesday, February 14, to benefit the more than 5,000 Portland and Vancouver-area seniors served by Loaves & Fishes Centers daily.

Each Valentine-A-Gram includes two delicious Cinnabons, a packet of fresh ground Seattle's Best Coffee, orange juice from Sun Orchard Premium Juices, a jar of Cinnabon's famous Makarra cinnamon, an insulated travel mug, a gourmet lollipop from See's Candies, and gift certificates for Cinnabon, Jamba Juice and Hollywood Video. The cost is \$24.95.

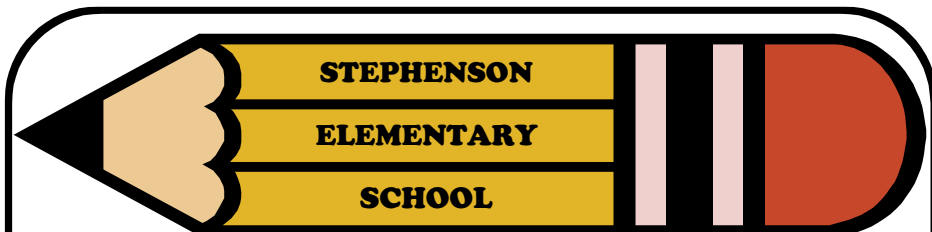
All of the products for the gift boxes are donated so that 100 percent of the money raised through the sale of Valentine-A-Grams goes to support the Meals-On-Wheels program. Hundreds of people who volunteer to deliver Valentine-A-Grams make the event possible each year.

Cinnabon owners John Whittaker and Steve Foltz said their support of the 12th Annual Valentine-A-Gram fundraiser has become a tradition that illustrates the importance of corporate giving.

"Both Steve and I, as do all our Cinnabon employees, feel very proud of the opportunity to support an organization as deserving as Loaves & Fishes Centers," Whittaker said. "The fact that 100 percent of the purchase price goes directly to providing food to seniors makes this an extra-special event."

Valentine-A-Gram relies on more than 400 volunteers to deliver the gift boxes on the morning of Valentine's Day. Deliveries take about an hour and begin at 7:30 a.m. Pick-up points are available on both the east and west sides of Portland and in Vancouver.

To order Valentine-A-Grams by February 5 or to volunteer to deliver, go to www.loavesandfishesonline.org or phone 503-736-6325.



"We're proud to be rated an EXCEPTIONAL school by the Oregon Dept. of Education"

Kindergarten Round-Up
Monday, February 5, 2007
or
Monday, March 5, 2007
6:00 - 7:00 PM

Call to
schedule a
Tour!
503 916-6318

Also join us for KINDERVIEW! You and your child are invited to join our Kindergarten teachers for a 40-minute lesson in the classroom.

Wednesday, February 21st Time: 12-12:40PM

STEPHENSON SCHOOL OFFERS:

Full day class instruction

Highly qualified teachers

Challenging academic curriculum with specials including:

Physical Education, Spanish Language Instruction

Music Education, Technology Education, Library, Field Trips

Community Partnerships

Over 200 active school volunteers!

On-site childcare and after school enrichment courses



2627 SW Stephenson Street
Portland, Oregon 97219
(503) 916-6318

For more information visit our website www.stephenson.pps.k12.or.us

Is getting fit on the top of your resolutions list?

Join Johns Landing
Curves now
for 30% off
the joining fee,
and the first
30 days are FREE.

Johns Landing
Curves
SW Kelly & Pendleton

Phone 503-445-9501

5820 SW Kelly Avenue

johnslandincurves@yahoo.com

What is email fraud, and what should I do about it?

Indiana University <http://kb.iu.edu/data/afvn.html>

There are many types of fraud, and email is an inexpensive and popular method for distributing fraudulent messages to potential victims. According to the US Secret Service, hundreds of millions of dollars are lost annually and the losses continue to escalate. Most fraud is carried out by people obtaining access to account numbers and passwords. Never respond to any message that asks you to send cash or personal information. You won't receive any riches, and in fact you could get into legal trouble if you become involved with one of these scams.

Some of the most common fraudulent messages are non-monetary hoaxes or non-monetary chain mail. Treat these as you would spam; for more information, see the Knowledge Base document What should I do when I get spam email? However, if you receive an email message that appears to involve money, or asks for personal information, do not respond.

Below you'll find information about various types of email fraud. If you receive any of these types of messages, you can report them to the Federal Trade Commission. To do so, forward the message with full headers to: spam@uce.gov.

Personal information scams (phishing)

These scams, called "phishing," are currently the most popular and thus dangerous form of email fraud. They use email messages that appear to come from a legitimate company such as CitiBank, Best Buy, eBay, PayPal, or your banking institutions. They will ask you to go to a web page to "update" or "verify" your information. Sometimes these messages will inform you that your account will be deleted if you do not do this, or they claim that you placed an order or made a charge to your account. By going to the links provided or filling out the form in these email messages, you provide the fraudulent party with your personal and financial information. Whenever you are asked to provide personal or financial information through email or a web form, verify that the source is real by going separately to that organization's web page (do not use the link provided in the email message) and forward a copy of the email message you received to the contact email address you find on the company's web page. Ask the company to verify that the information in the message is legitimate. For more information about phishing scams, see: <http://www.ftc.gov/bcp/online/pubs/alerts/phishingalrt.htm>.

Nigerian bank scams

A very common type of email fraud is advance fee fraud schemes. The perpetrators of advance fee fraud (sometimes referred to as Nigerian or foreign bank scams) are often very creative and innovative. This fraud is also called 4-1-9 fraud after the section of the Nigerian penal code that addresses fraud schemes. Nigerian nationals, purporting to be officials of government or banking institutions, will fax or email letters to individuals and businesses in the US and other countries. The correspondence states that a reputable foreign company or individual is needed for the deposit of an overpayment on a procurement contract. Some variations of this scheme have the son or daughter of a murdered official plead for your assistance in depositing an inheritance in a US bank. Individuals are asked to provide funds to cover various fees, and also asked for personal identifiers such as Social Security numbers, bank account numbers, and other similar data. Once this information is received, the victims often find that their bank accounts are emptied. It is hard to pinpoint how much has been lost in these scams since many victims do not report their losses to authorities due to fear or embarrassment. If you receive this type of message, you may report it to the US Secret Service for its ongoing investigation of this type of fraud; forward the message with full headers to: 419.fid@uss.treas.gov.

Sweepstakes, lottery, and prize scams

Similar to the Nigerian bank scam, these scams trick you into thinking you've won large amounts of money. You sometimes have to send personal information which is then used to rob you, or you are asked for processing fees for your fictitious winnings. Be suspicious if:

- You know you didn't enter the competition or promotion that you've won.
- You're asked for any sort of processing fee.
- You're asked to buy "low-risk" shares in a fund for purchasing "high-stakes" tickets.
- You are offered bait prizes that are substandard or you're asked to purchase "exclusive items".
- Receipt of your prize requires travel or other arrangements at your own expense.

Do not reply to these types of messages. Instead, forward them with full headers to postmaster at the address where the message originated.

Pyramid schemes

This is a scheme in which a hierarchy is created by people joining under others who joined previously, and in which those who join make payments to those above them in the hierarchy, with the expectation of being able to collect payments from those who join below. Pyramid schemes are prohibited by US law and by the laws of most other nations. Pyramid schemes are variously defined under these laws either as a form of gambling or as outright fraud.

Ponzi schemes

These are named after Charles Ponzi, who ran such a scheme in 1919-1920. A Ponzi scheme is an investment scheme in which returns are paid to earlier investors entirely out of money paid into the scheme by newer investors. Ponzi schemes are similar to pyramid schemes, but differ in that Ponzi schemes are operated by a central company or person, who may or may not be making other false claims about how the money is being invested and about the source of the returns. Ponzi schemes don't necessarily involve a hierarchal structure, as in a pyramid scheme; there is merely one person or company collecting money from new participants and using this money to pay off promised returns to earlier participants. Ponzi schemes are not necessarily illegal, but they are difficult to distinguish from illegal pyramid schemes. In almost every case, only a very few early investors actually benefit from them.

Multilevel marketing (MLM) schemes

Multilevel marketing plans, also known as network or matrix marketing, are a way of selling goods or services through distributors. These plans typically promise that if you sign up as a distributor, you will receive commissions for both your own sales and those of other people you recruit to join the distributors. Multilevel marketing plans usually promise to pay commissions through two or more levels of recruits, known as the distributor's downline. While some MLM schemes are supposedly legitimate, if a plan offers to pay commissions for recruiting new distributors, it likely is illegal. Most states outlaw this practice, which is known as pyramiding. State laws against pyramiding say that a multilevel marketing plan should pay commissions only for retail sales of goods or services, not for recruiting new distributors. Pyramiding is prohibited because plans that pay commissions for recruiting new distributors inevitably collapse when no new distributors can be recruited. When a plan collapses, most people, except perhaps those at the very top of the pyramid, lose their money.

Chain Mail

Chain mail is a form of junk mail. A chain mail message is generally sent to several people and includes instructions that each person should forward the letter to several others. These messages waste system resources and often grow quite large as senders append their own additions. Do not forward such messages. Email fraud and hoaxes often occur in chain mail. Never send money or personal information to people on lists via chain mail, or from whom you've received chain mail.

Auto proof insurance and registration

Michael Boyer: Southwest Portland Crime Prevention Program Coordinator

A common question among the residents of Southwest Portland is "what is the law in regards to carrying proof of insurance and vehicle registration?" The answer to this question can be found in the Oregon Revised (copied below). Most police officers are not concerned whether or not this information is kept in the car at all times or on person; just as long as this information is in the car while it is on the road. As a Crime Prevention Program Coordinator I recommend that you remove these documents from your car when it is left in one spot for an extended period (during a vacation for example). For all other times keep it in a secure location, within reach. If you are stopped by a police officer make sure you tell them what you are doing before you reach for those documents.

806.011 Insurance card required.

An unexpired card issued as provided in ORS 742.447, or other current proof of compliance with financial or future responsibility requirements approved by rule by the Department of Transportation, shall be carried in each motor vehicle that is operating in this state and that is not exempt from compliance with financial or future responsibility requirements. Failure of the driver of a motor vehicle to show a valid card or other proof of compliance when asked to do so by a police officer is reasonable grounds for the officer to believe that the person is operating the vehicle in violation of ORS 806.010.

803.505 Failure to carry registration card; penalty.

(1) The owner of a vehicle that is registered in this state commits the offense of failure to carry a registration card if the owner does not place and keep the card in or on the vehicle in a manner that makes it readily available for police inspection upon request.

(2) The following apply to the offense described in this section:

(a) The owner of a commercial vehicle is not in violation of this section if a photocopy of the card is used.

(b) In the case of a camper, the owner shall keep the registration card in the transporting vehicle.

(c) In the case of a snowmobile the registration card or certificate shall be in a place that is readily accessible whether or not the snowmobile is in operation.

(3) The offense described in this section, failure to carry a registration card, is a Class D traffic violation.

Neighborhood	Murder	Rape	Molest	Robry	Agr Aslt	Res Burg	N/Res Burg	Arson	Theft fr. Auto	Bike Theft	Other Larc	Auto Theft	Vandl	Total	YTD rate/1000 pop.
Arnold Creek	0	0	0	0	0	1	0	0	0	0	0	0	0	1	10.2
Ashcreek	0	0	0	0	1	0	0	0	2	0	0	0	1	4	9.5
Bridlemile	0	0	0	0	0	1	0	0	2	0	1	1	2	7	14.6
Collins View	0	0	0	0	0	0	0	0	2	1	5	0	3	11	78.3
Crestwood	0	0	0	0	0	0	0	0	1	0	1	0	0	2	9.2
Far Southwest	0	0	0	0	0	0	1	0	0	0	2	1	0	4	65.6
Hayhurst	0	0	0	0	0	2	2	0	2	0	0	0	4	10	13.5
Healy Heights	0	0	0	0	0	0	0	0	1	0	0	0	1	2	22.6
Hillsdale	0	0	1	0	0	5	0	0	1	1	6	3	16	33	28.2
Homestead	0	0	0	0	1	0	0	0	3	0	1	0	2	7	79.8
Maplewood	0	0	1	0	0	1	0	0	1	1	0	0	1	5	16.0
Markham	0	0	0	0	0	0	0	0	3	0	1	0	0	4	18.1
Marshall Park	0	0	0	0	0	0	0	0	1	0	0	0	0	2	9.8
Multnomah	0	0	0	0	0	2	1	0	10	0	4	0	2	19	33.8
S Burlingame	0	0	0	0	0	1	0	0	0	1	0	0	0	2	18.0
SW Hills	0	0	0	0	0	1	0	0	10	0	0	1	1	13	26.6
S Portland	0	0	0	0	0	1	4	0	14	1	6	5	7	38	60.4
W Ptld Park	0	0	1	0	0	2	3	0	1	0	2	1	0	10	30.9
Total SW	0	0	3	0	2	17	12	0	54	5	29	12	40	174	29.7

Get informed about crime in SW

Michael Boyer: Southwest Portland Crime Prevention Program Coordinator

Starting in the first week of February, the Southwest Portland Crime Prevention Office will be sending out weekly Crime Prevention News E-mails. These weekly e-mails will include information about crime in Southwest Portland. In addition to crime information, these e-mails will have other useful bits of information from the Portland Police Bureau (PPB), Portland Office of Emergency Management (POEM), Bureau of Emergency Communications (BOEC), and other city partners. If you would like to take part in this free service, please e-mail your Crime Prevention Program Coordinator Michael Boyer at michael.boyer@ci.portland.or.us. Please include in the subject line "SW Crime Prevention News."

Police arrest major SW car prowler

Officer Brian Hughes

Portland Police Bureau Neighborhood Response Team

Throughout the month of December 2006 and January 2007, numerous car prowler reports came into the Portland Police Bureau having occurred in the area of SW Multnomah and Barbur Blvd. A records report revealed that in a one-month time period, there were 31 theft-related calls in this area, nearly a 300% increase from the 10 reported one year prior. All car prowler reports are forwarded to the Neighborhood Response Team Officers so that these trends can be identified.

On Saturday, January 6, 2007 at about 10:25 am, Portland Police Bureau Officer James Westberry was flagged down in Multnomah Village by witnesses to a car prowler in progress where the suspect had smashed out the window of a parked car. Officer Westberry quickly located the suspect in the area of SW 35th and Multnomah and attempted to stop him as he was leaving the area on a mountain bike. The person stopped and then sped away as Officer Westberry made contact. During the pursuit, the suspect threw a laptop computer he had just taken from the mentioned car into a nearby yard. Officer Westberry called for additional officers to assist with the pursuit. A short time later, in the area of SW 19th Ave and Spring Garden, Officer Jason Wolf spotted the suspect on the bike and took him into custody.

Officers Timmy Evans and Dean Halley assisted with the investigation by recovering the mentioned laptop and by taking theft reports from the initial car prowler victim as well as a second victim, who had been working at the National Guard Armory on Multnomah Blvd when his car was prowled.

The suspect was identified as Robert Sullivan, a 28-year-old resident of the Multnomah Neighborhood. Sullivan, on parole for a firearms offense, had recently moved to Multnomah.

Officer Westberry, a district officer for the Southwest Neighborhoods contacted his counterpart in the Neighborhood Response Team Office, Officer Hughes. Together, they were able to recover property taken from 8 separate victims during car prowls in Southwest. Items recovered ranged in value from a music CD to a GPS Navigation System to personal financial documents. Sullivan was lodged in the Multnomah County jail on charges of Unlawful Entry to Motor Vehicle (8 counts), First Degree Theft, First Degree Criminal Mischief, Identity Theft, Mail Theft, and a probation violation charge from his parole officer.

Additional follow-up led to five more car prowler cases being cleared and a portion of the stolen property returned to the owners.

On January 12, 2007 a Multnomah County grand jury convened to hear evidence related to this case. Many victims testified and the grand jury handed down a multi-count indictment against Sullivan. The same day the grand jury returned a 43-count indictment against Sullivan. Those indictments are as follows: six counts of Second Degree Criminal Mischief, three counts of Identity Theft, fourteen counts of Unlawful Entry to Motor Vehicle, one count of Theft Third Degree, four counts of Theft 1 (over \$1000), five counts of Theft One by Receiving, and finally eight counts of Theft Second Degree. At the time this article was written, it is unknown how much time Sullivan will be serving if found guilty.

Winter driving tips

<http://www.oregon.gov/ODOT/COMM/winterdriving>



Prepare for stormy conditions

Whenever there's a chance of stormy conditions, Oregon Department of Transportation officials encourage drivers to prepare their vehicles for winter driving conditions and drive with extra caution.

Before traveling to areas that may have hazardous conditions, double-check the condition of your vehicle:

- Inspect windshield wipers and fill the windshield washer tank with winterized fluid. Properly inflate tires, including the spare.
- Make sure you have tire chains. If you don't have chains, buy a set now so you'll have them for the entire season.
- Check the antifreeze level and make sure engine hoses and belts are in good shape.
- Make sure the heater and defroster are working properly.
- Check the age of your vehicle's battery. Cold weather can reduce the power of older batteries.
- Test all lights. Carry spare light bulbs.

If you are driving in areas that have ice or snow on the road, adjust your driving to fit conditions and remember these winter driving tips:

- Turn off your cruise control.
- If you lose traction and your vehicle feels like it's floating, gradually slow down. Don't slam on the brakes.
- Use caution when driving on bridges or concrete highways. These surfaces are the first to freeze and become slippery when the temperature drops.
- Slow down in advance of shaded areas, especially on curves. Shaded areas are cooler and may have ice that is difficult to see.
- Don't pass snowplows or sanders, and don't follow them too closely.

Make sure your vehicle is stocked with:

- A full fuel tank and a good highway map;
- An ice scraper, battery booster cables, road flares, properly inflated spare tire, vehicle jack, lug wrench and basic tool kit;
- A small shovel, a bag of cat litter or sand for traction in case you get stuck, and a plastic tarp to help keep you dry when installing tire chains;
- A flashlight with extra batteries and bulbs, an extra pair of winter gloves and a warm hat, a change of clothes and a warm blanket, snack foods, matches in a waterproof container, extra quarters for phone calls, a pocketknife and a first aid kit;
- A large thermos bottle filled with water or a hot drink; and
- A cell phone with fully charged extra batteries.
- If you travel with an infant or baby, pack extra food, warm clothes and blankets, toys and games, and extra diapers, just in case. Remember to properly use your child safety seat.

Before leaving, tell a friend where you are going, the planned route, and when you will return. Tell your friend to call the police if you do not return on time and he or she does not hear from you.

Oregon's weather can change quickly and without warning. For road conditions in Oregon, call 511 or 800-977-ODOT (6368). Outside Oregon, dial (503) 588-2941. Reports are available 24 hours a day.

Visit www.TripCheck.com for information on road and weather conditions, incidents and traffic

Helpful numbers

Emergency police, fire, or medical help 911	Office of Neighborhood Involvement 503-823-4519
Non-emergency police assistance 503-823-3333	Neighborhood Mediation Center 503-823-3152
Portland Police information & referral 503-823-4636	Mayor's Comment Line 503-823-4127
City of Portland/Multnomah County information and referral 503-823-4000 503-823-6868 TDD	City Ombudsman 503-823-0144
Elected Officials	
SW Crime Prevention Coordinator Michael Boyer 503-823-3131	Mayor Tom Potter 503-823-4120 mayorpotter@ci.portland.or.us
Neighborhood Response Team Officers Mark Friedman & Brian Hughes 503-823-0234 & 503-823-0235	Commissioner Sam Adams 503-823-3008 samadams@ci.portland.or.us
Mental Health Crisis Line 503-988-4888	Commissioner Randy Leonard 503-823-4682 randy@ci.portland.or.us
Traffic Safety & Livability Hotline 503-823-SAFE	Commissioner Dan Saltzman 503-823-4151 dsaltzman@ci.portland.or.us
Nuisance, housing code violations 503-823-7306	Commissioner Erik Sten 503-823-3589 erik@ci.portland.or.us
Abandoned auto hotline 503-823-7309	City Auditor Gary Blackmer assessments & liens, audits, city elections, recorder, independent police review, om- budsman 503-823-4078 gblackmer@ci.portland.or.us
Noise control office 503-823-7350	
Graffiti abatement hotline 503-823-4TAG	
Liquor license issues 503-823-3092	
Independent Police Review 503-823-0146	

Helpful websites

Office of Neighborhood Involvement website www.portlandonline.com/oni	Information on domestic violence www.co.multnomah.or.us/dchs/dv/ Good basic information and many local resources. It also includes an excellent web-based training for businesses and other groups. Highly recommended.
• Neighborhood demographics • Neighborhood association contact info • Maps of neighborhood boundaries • Crime prevention educational materials	Information on identity theft www.consumer.gov/idtheft/ Includes detailed materials on preventing and recovering from identity theft. A site run by the Federal Trade Commission.
Portland Police Bureau website www.portlandonline.com/police	Information on hate crimes www.tolerance.org A website of the Southern Poverty Law Center, one of the nation's leading authori- ties on violence based on racism, homopho- bia, religious bigotry, etc.
• CrimeMapper- see crime levels for 8 different crimes in your immediate area for the past 12 months. Just type in your address.	Information on sex offender registration. www.co.multnomah.or.us/dcj/acjs/sexoffender- sup.html Info on how sex offender registration & notification works in Oregon
• "Guide to home & vehicle security"- an excellent booklet detailing measures you can take to improve your home's resistance to burglary, vandalism, and other crimes.	Resources for youth www.girlsinitiativenetwork.org A local community-based coalition of girls, young women, and their supporters involved in advocacy, education, and activism.
• Guide to robbery prevention & response- great tips for businesses to both reduce the chance of being robbed and know what to do if it happens.	www.yar.org Provides grants to young people to design and carry out service projects.
• "Problem-solving resource guide"- the same list of referral numbers the police officers carry around. Very helpful.	www.girlsinc.org National non-profit youth organization dedicated to inspiring all girls to be strong, smart, and bold.
• Public information office- sign up to re- ceive emailed notices of CrimeStoppers alerts and other news related to crime prevention and law enforcement. This is the list that local TV stations and newspapers use to find out about break- ing stories.	www.mcgruff.org A site run by the National Crime Prevention Council. Includes many games and activities to teach children about crime prevention.
• Suspected drug house complaint form- the Drugs and Vice Division wants to hear from you if you know about a pos- sible drug house.	
Sites for federal statistics on crime www.ncjrs.org www.ncvc.org www.ojp.usdoj.gov www.fedstats.gov www.albany.edu/sourcebook/	
City of Portland main website www.portlandonline.com	
Multnomah County main website www.co.multnomah.or.us	
Metro regional government main website www.metro-region.org	
State of Oregon main website www.oregon.gov	



Parker Realty, Inc.
Jeff Parker
*Your neighborhood
Realtor since 1980*
503.977.1888
www.parkerrealtypartland.com
7890 SW 35th Ave. Portland, OR 97219

